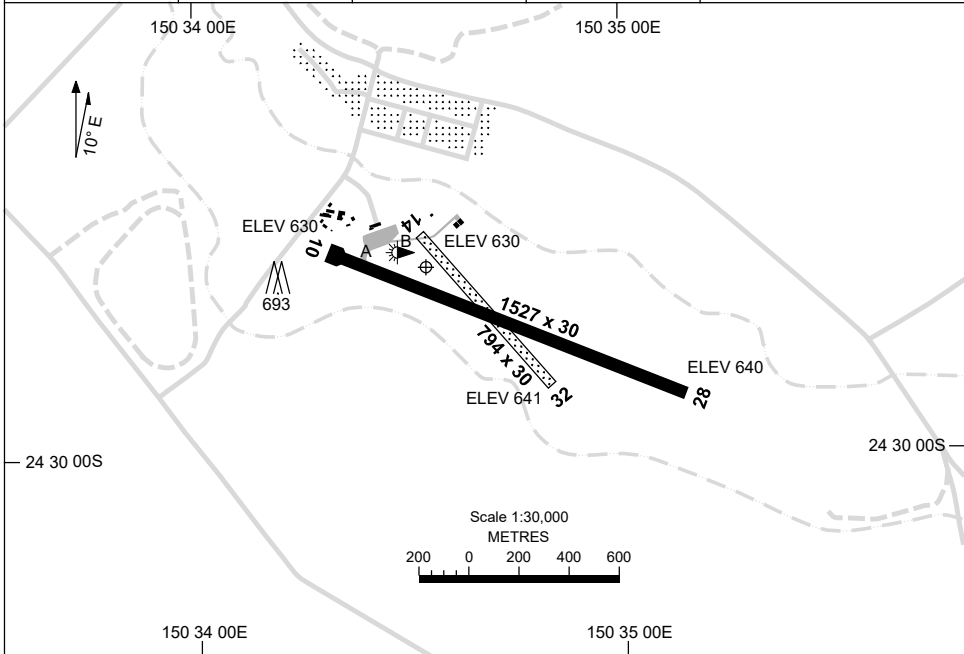


30 NOV 2023

AD ELEV 644  
24 29 38S 150 34 34E

AERODROME CHART  
**THANGOOL, QLD (YTNG)**

AWIS 134.05	FIA BN CEN 119.55	CTAF+AFRU 126.7	AFRU+PAL 126.7	Bearings are Magnetic Elevations in FEET AMSL
----------------	----------------------	--------------------	-------------------	--



RWY	AERODROME LIGHTING	
		TAXIWAY : BLUE EDGE RL : AFRU+PAL 126.7 , SDBY (5 SEC)
<b>10</b> <sup>102</sup>	LIRL	
282 <b>28</b>	LIRL	
<b>14</b> <sup>130</sup>		
310 <b>32</b>		

**NOTES**

1. FIA FREQ 119.55 AVBL IN CIRCUIT AREA.

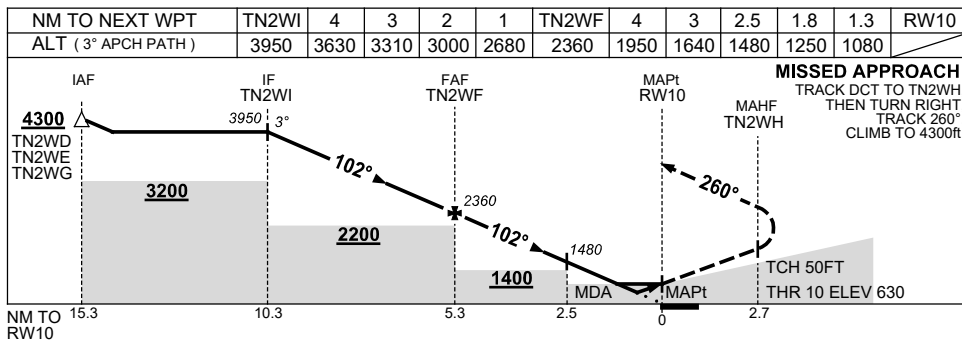
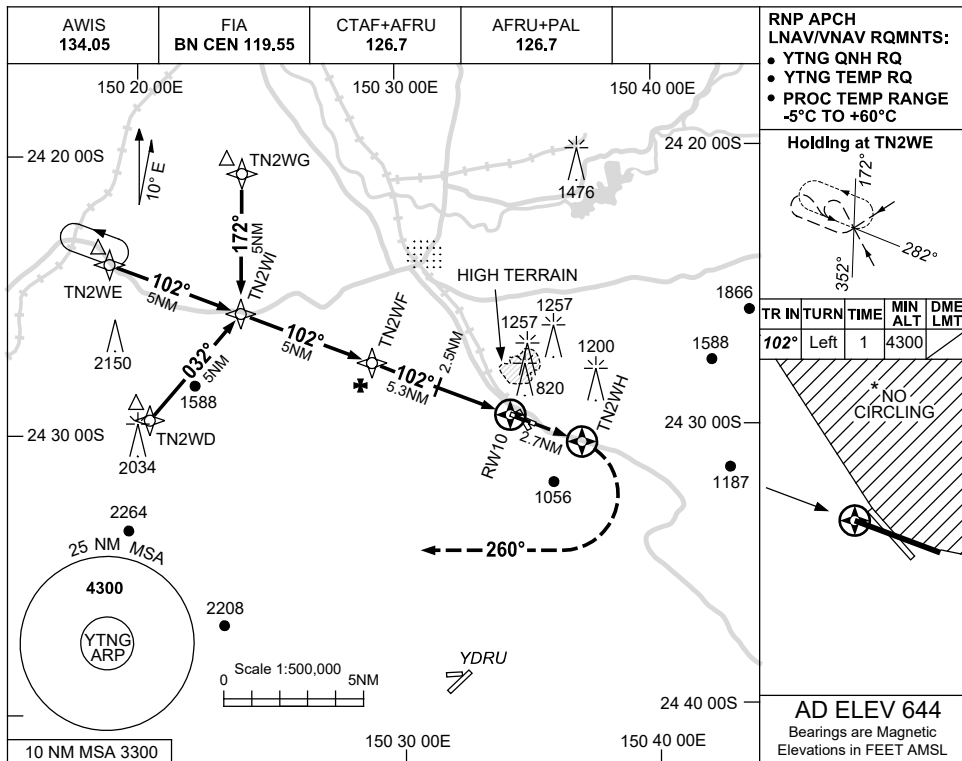
Changes: NOTES.

TNGAD01-177

USE QNH

RNP RWY 10  
THANGOOL, QLD (YTNG)

13 JUN 2024



**NOTES**

CATEGORY	A	B	C	D
LNAV/VNAV		1080 (450-2.5)		NOT APPLICABLE
LNAV		1250 (620-3.5)		
CIRCLING*	1700 (1056-2.4)	1800 (1156-4.0)		
ALTERNATE	(1556-4.4)	(1656-6.0)		

1. MAX IAS:  
INITIAL : 210KT.
- \*2. NO CIRCLING IN  
SECTOR NORTH OF  
RWYS 14/32 & 10/28.

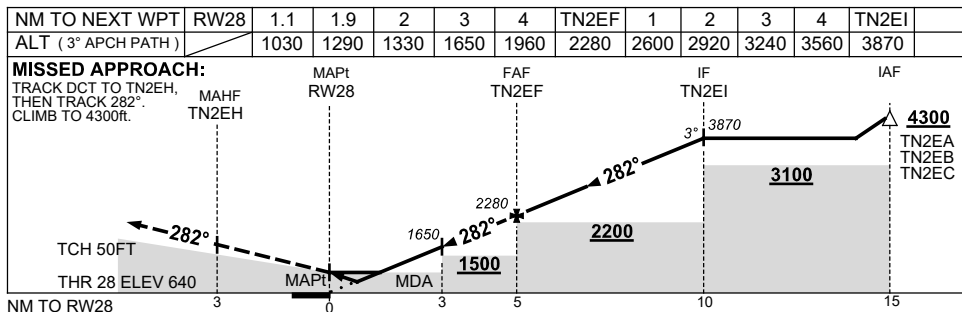
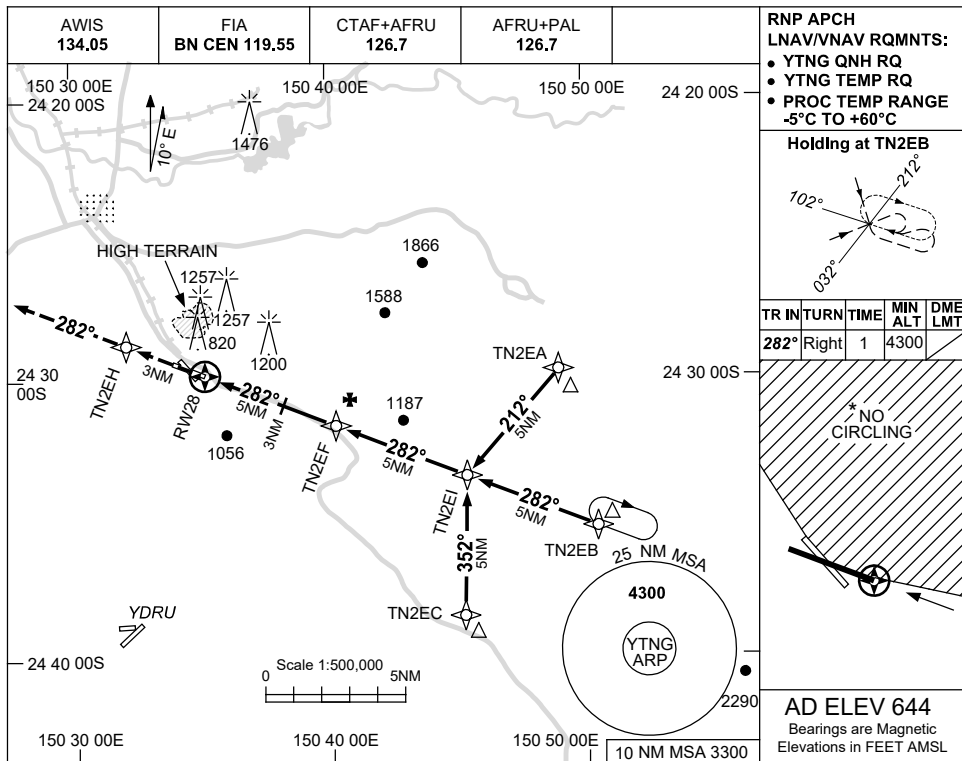
Changes: CAT C CIRCLING AND ALTERNATE MINIMA, SEGMENT MINIMA, Editorial.

TNGGN01-179

USE QNH

RNP RWY 28  
THANGOOL, QLD (YTNG)

13 JUN 2024



**NOTES**

CATEGORY	A	B	C	D
LNAV/VNAV	1030 (390-2.2)			NOT APPLICABLE
LNAV	1290 (646-3.7)			
CIRCLING *	1700 (1056-2.4)		1800 (1156-4.0)	
ALTERNATE	(1556-4.4)		(1656-6.0)	

1. MAX IAS: INITIAL : 210KT.
- \* 2. NO CIRCLING IN SECTOR NORTH OF RWYS 14/32 & 10/28.

Changes: LNAV MINIMA, CAT C CIRCLING AND ALTERNATE MINIMA, SEGMENT MINIMA, Editorial.

TNGGN02-179