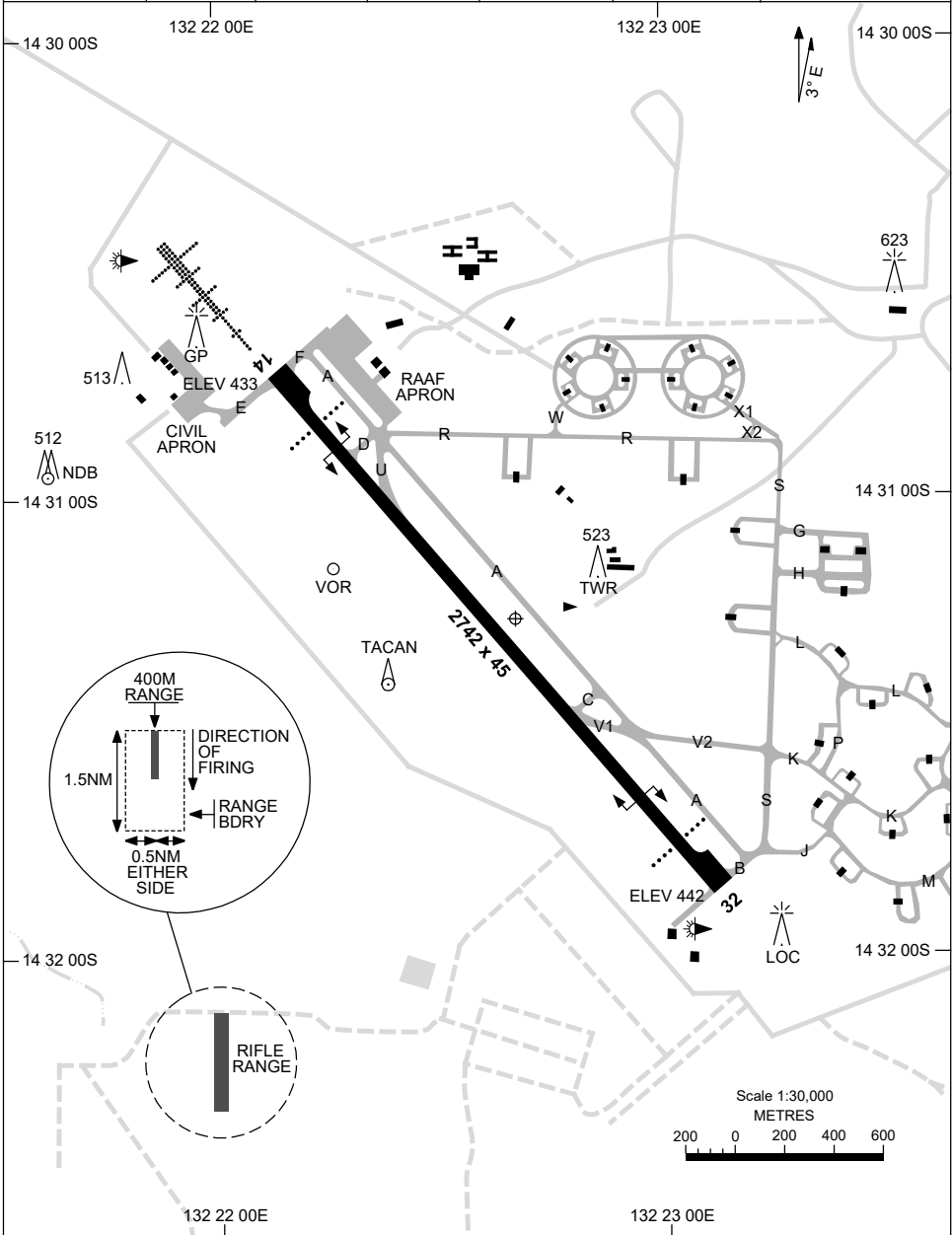


21 MAR 2024

AD ELEV 443
14 31 16S 132 22 40E

AERODROME CHART - Page 1
TINDAL, NT (YPTN)

ATIS 112.3 124.0 316.3	TWR 119.7 257.3	APP 120.95 261.4	SMC 135.85 264.3	FIA (AH) BN CEN 122.6	CTAF+AFRU (AH) AFIS 119.7	Bearings are Magnetic Elevations in FEET AMSL
---------------------------	--------------------	---------------------	---------------------	--------------------------	---------------------------------	--



Changes: FIRING RANGE, WDI AND GP RELOCATED, Editorial.

PTNAD01-178

30 NOV 2023

AD ELEV 443
14 31 16S 132 22 40E

AERODROME CHART - Page 2
TINDAL, NT (YPTN)

ATIS 112.3 124.0 316.3	TWR 119.7 257.3	APP 120.95 261.4	SMC 135.85 264.3	FIA (AH) BN CEN 122.6	CTAF+AFRU (AH) AFIS 119.7	Bearings are Magnetic Elevations in FEET AMSL
---------------------------	--------------------	---------------------	---------------------	--------------------------	---------------------------------	--

--	--	--	--	--	--	--

RWY	AERODROME LIGHTING					
	TAXIWAY : CENTRELINE GREEN RL : MAN (PN) , SDBY , PTBL (15 MIN PN)					
14 ¹³⁶ ₃₁₆ 32	PAPI 3.0° 57FT HIRL HIAL - CAT I PAPI 3.0° 57FT HIRL					

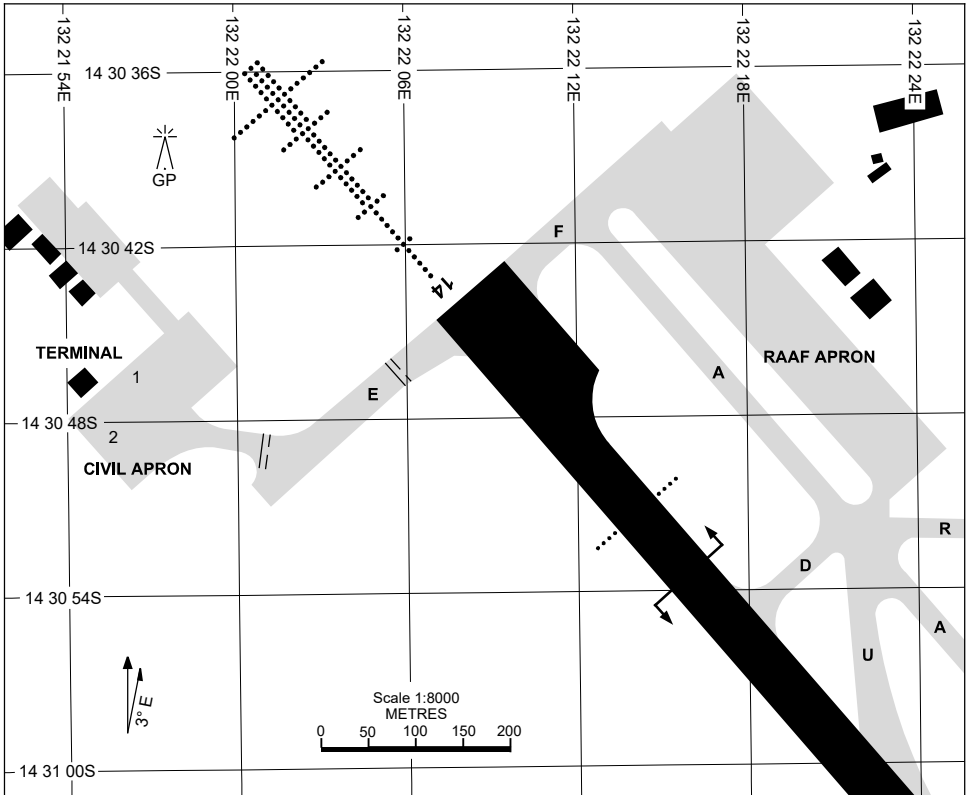
NOTES	1. RWY 14 SFL NOT AVBL.
--------------	-------------------------

Changes: AFIS, Editorial.

PTNAD02-177

APRON CHART
TINDAL, NT (YPTN)

21 MAR 2024



PARKING POSITION INFORMATION

STAND	CO-ORDINATES	ELEV (ft)	CAPACITY	HYDRANT FUEL
1	14 30 42S 132 22 00E	423	F27	Nil
2	14 30 48S 132 22 00E	425	F28	Nil

NOTE: GA AIRCRAFT ARE TO REMAIN CLEAR OF STANDS 1 AND 2 ON CIVIL APRON.

Changes: WDI AND GP RELOCATED, Editorial.

DME or GNSS ARRIVAL PROCEDURES TINDAL, NT (YPTN)

30 NOV 2023

ATIS 112.3 124.0 316.3	TWR 119.7 257.3	APP 120.95 261.4	SMC 135.85 264.3	FIA (AH) BN CEN 122.6	CTAF+AFRU (AH) AFIS 119.7	Bearings are Magnetic Elevations in FEET AMSL
---------------------------	--------------------	---------------------	---------------------	--------------------------	---------------------------------	--

**DME USING TDL DME
REFERENCE WAYPOINT TN VOR**

**ALL ROUTES
TO TN
VOR or NDB**

MISSED APPROACH:
CLIMB ON TRACK
TO 3000FT.

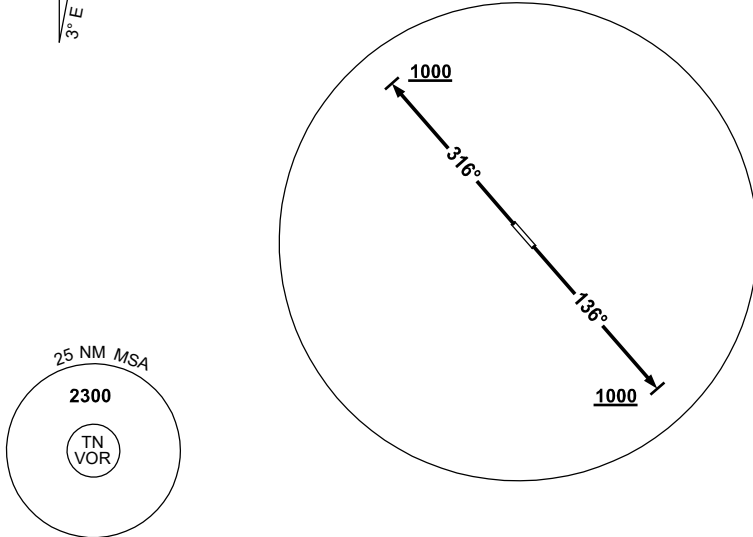
NM TO TN VOR	25	15		9	5	4	0													
CIRCLING MINIMA	A,B: 1260-2.4				C: 1290-4.0				D: 1350-5.0											
NM TO TN VOR	8.2	8	7	6	5	4	3	2.8	2.7											
ALT (3° APCH PATH)	3000	2950	2640	2320	2000	1680	1350	1290	1260											

**STANDARD INSTRUMENT DEPARTURES (SID)
TINDAL THREE DEPARTURE (RADAR)
TINDAL, NT (YPTN)**

30 NOV 2023

ATIS 112.3 124.0 316.3	TWR 119.7 257.3	APP 120.95 261.4	SMC 135.85 264.3	FIA (AH) BN CEN 122.6	CTAF+AFRU (AH) AFIS 119.7	Bearings are Magnetic Elevations in FEET AMSL
---------------------------	--------------------	---------------------	---------------------	--------------------------	---------------------------------	--

NOT TO SCALE



10 NM MSA 2200

TINDAL THREE DEPARTURE (RADAR)

RWY 14

- GRAD 3.3%
- Track 136°
- AT 1000ft but not before DER turn to assigned heading or track

RWY 32

- GRAD 3.3%
- Track 316°
- AT 1000ft but not before DER turn to assigned heading or track

COMMUNICATIONS FAILURE PROCEDURE

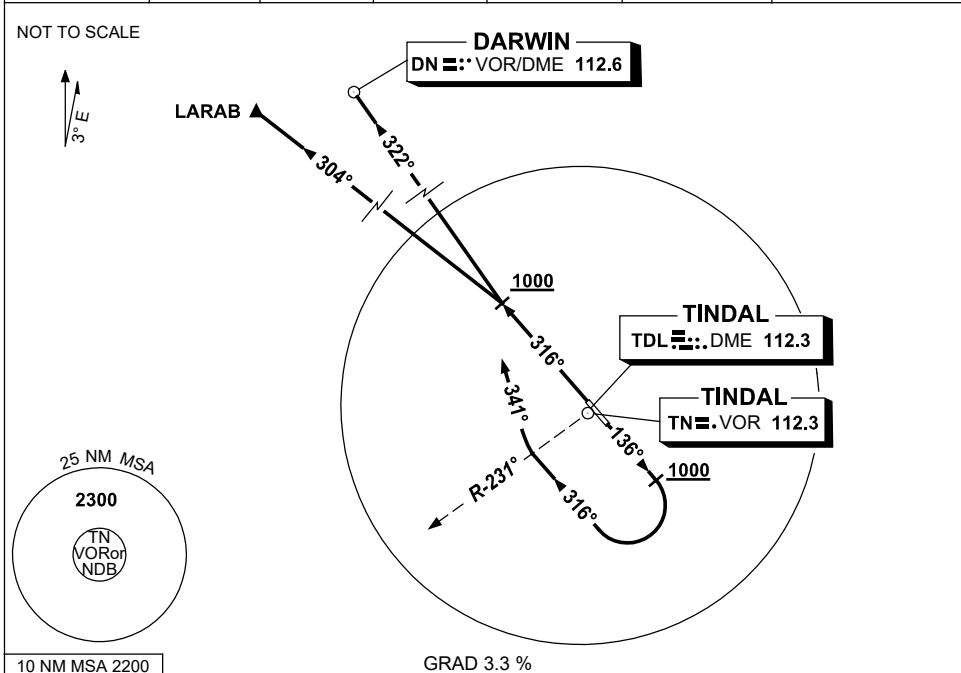
On recognition of Communications Failure:

- Squawk 7600
- Maintain last assigned vector for two minutes, and
- CLIMB IF NECESSARY TO MINIMUM SAFE ALTITUDE to maintain terrain clearance, then
- Proceed in accordance with the latest ATC route clearance acknowledged

**STANDARD INSTRUMENT DEPARTURES (SID)
DEPARTURES - RWYS NORTH
TINDAL, NT (YPTN)**

30 NOV 2023

ATIS 112.3 124.0 316.3	TWR 119.7 257.3	APP 120.95 261.4	SMC 135.85 264.3	FIA (AH) BN CEN 122.6	CTAF+AFRU (AH) AFIS 119.7	Bearings are Magnetic Elevations in FEET AMSL
---------------------------	--------------------	---------------------	---------------------	--------------------------	---------------------------------	--



**LARAB FOUR DEPARTURE
DARWIN (DN) FOUR DEPARTURE**

RWY 14

- Track 136°
- AT 1000ft BUT NOT BEFORE DER

For LARAB & DN

- Turn RIGHT, track 316°
- After crossing TN R-231° turn RIGHT
- Track 341°
- Intercept cleared route

RWY 32

- Track 316°
- AT 1000ft BUT NOT BEFORE DER

For LARAB

- Turn LEFT, track 304° for LARAB, thence as cleared

For DN

- Turn RIGHT, track 322° for DN, thence as cleared

COMMUNICATIONS FAILURE PROCEDURE

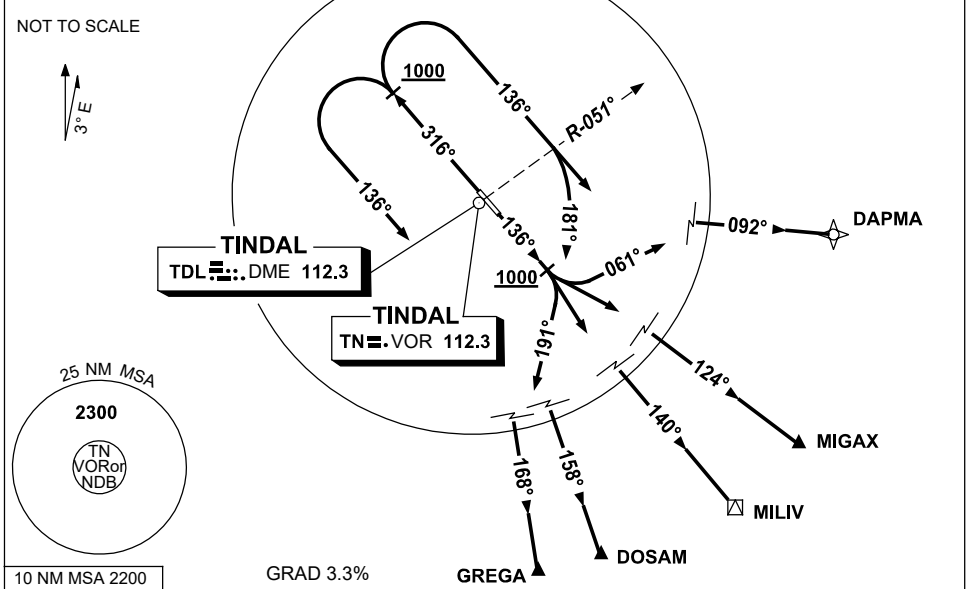
On recognition of Communications Failure:

- Squawk 7600
- Maintain last assigned vector for two minutes, and
- CLIMB IF NECESSARY TO MINIMUM SAFE ALTITUDE to maintain terrain clearance, then
- Proceed in accordance with the latest ATC route clearance acknowledged

**STANDARD INSTRUMENT DEPARTURES (SID)
DEPARTURES - RWYS SOUTH
TINDAL, NT (YPTN)**

30 NOV 2023

ATIS 112.3 124.0 316.3	TWR 119.7 257.3	APP 120.95 261.4	SMC 135.85 264.3	FIA (AH) BN CEN 122.6	CTAF+AFRU (AH) AFIS 119.7	Bearings are Magnetic Elevations in FEET AMSL
---------------------------	--------------------	---------------------	---------------------	--------------------------	---------------------------------	--



<p>DAPMA TWO DEPARTURE</p> <p>MIGAX THREE DEPARTURE</p> <p>MILIV FOUR DEPARTURE</p> <p>DOSAM FOUR DEPARTURE</p> <p>GREGA FOUR DEPARTURE</p> <p>RWY 14</p> <ul style="list-style-type: none"> • Track 136° • AT 1000ft BUT NOT BEFORE DER <p>For DAPMA</p> <ul style="list-style-type: none"> • Turn LEFT, track 061° • Intercept cleared route <p>For MIGAX</p> <ul style="list-style-type: none"> • Turn LEFT, track 124° to MIGAX, thence as cleared <p>For MILIV</p> <ul style="list-style-type: none"> • Turn RIGHT, track 140° to MILIV, thence as cleared <p>For DOSAM & GREGA</p> <ul style="list-style-type: none"> • Turn RIGHT, track 191° • Intercept cleared route 	<p>RWY 32</p> <ul style="list-style-type: none"> • Track 316° • AT 1000ft BUT NOT BEFORE DER <p>For DAPMA</p> <ul style="list-style-type: none"> • Turn RIGHT, track 136° • Intercept cleared route <p>For MIGAX & MILIV</p> <ul style="list-style-type: none"> • Turn RIGHT, track 136° • After crossing TN R-051° turn RIGHT • Track 181° • Intercept cleared route <p>For DOSAM & GREGA</p> <ul style="list-style-type: none"> • Turn LEFT, track 136° • Intercept cleared route
--	--

COMMUNICATIONS FAILURE PROCEDURE

On recognition of Communications Failure:

- Squawk 7600
- Maintain last assigned vector for two minutes, and
- CLIMB IF NECESSARY TO MINIMUM SAFE ALTITUDE to maintain terrain clearance, then
- Proceed in accordance with the latest ATC route clearance acknowledged

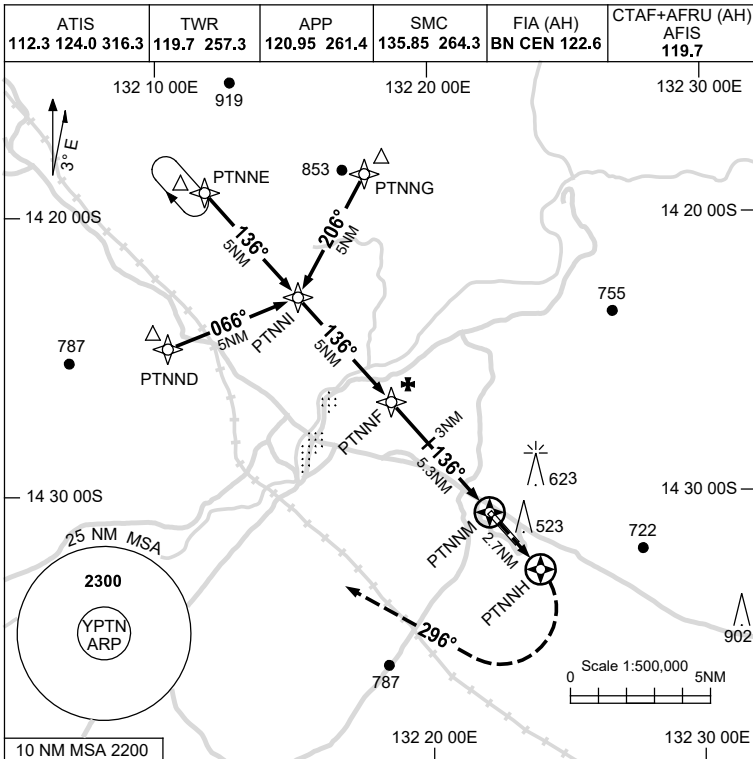
Changes: AFIS, Editorial.

PTNDP03-177

USE QNH

RNP RWY 14
TINDAL, NT (YPTN)

21 MAR 2024



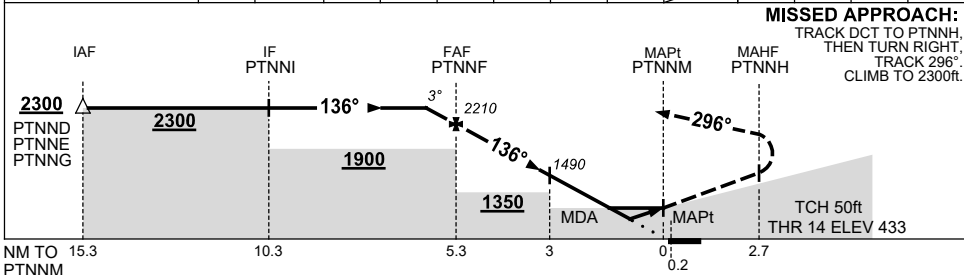
RNP APCH
LNAV/VNAV RQMTS:
• YPTN QNH RQ
• YPTN TEMP RQ
• PROC TEMP RANGE 0°C TO +60°C

Holding at PTNNE

TR	IN	TURN	TIME	MIN ALT	DME LMT
136°	Right		1	2300	

AD ELEV 443
Bearings are Magnetic
Elevations in FEET AMSL

NM TO NEXT WPT	0.3	PTNNF	5	4	3	2	1.3	0.7	PTNNM				
ALT (3° APCH PATH)	2300	2210	2120	1810	1490	1170	940	760					



NOTES

CATEGORY	A	B	C	D
LNAV/VNAV		760 (327-0.9)		
LNAV		940 (507-2.0)		
CIRCLING	1260 (817-2.4)		1290 (847-4.0)	1350 (907-5.0)
ALTERNATE	(1317-4.4)		(1347-6.0)	(1407-7.0)

1. MAX IAS:
INITIAL : 210KT.

Changes: VISIBILITY.

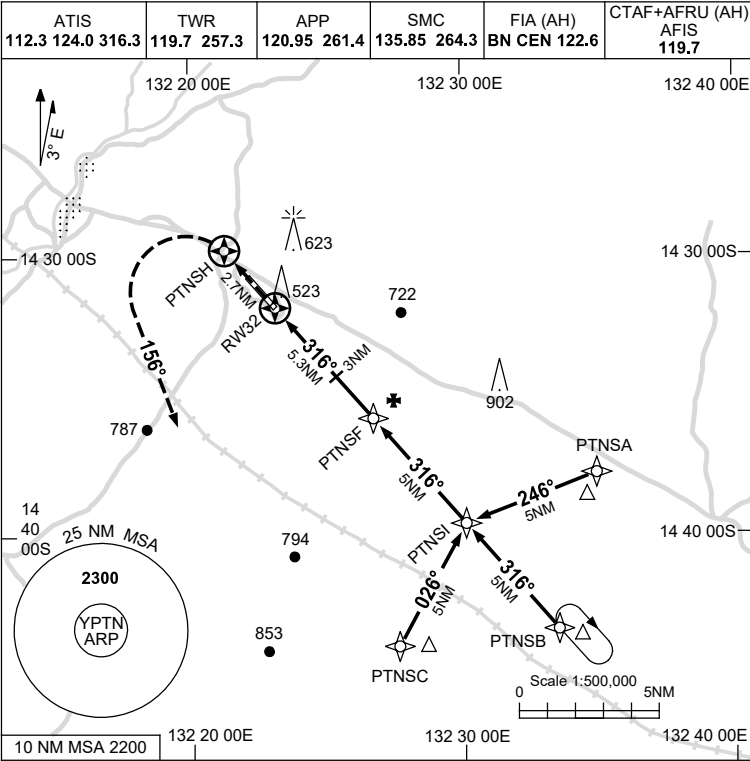
PTNGN01-178

USE QNH

RNP RWY 32

TINDAL, NT (YPTN)

30 NOV 2023



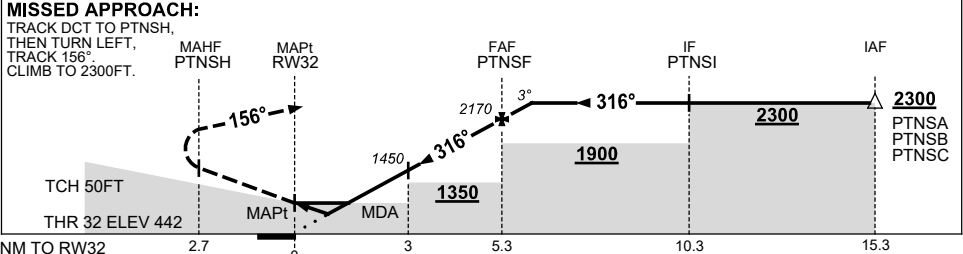
RNP APCH
LNAV/VNAV RQMNTS:
 • YPTN QNH RQ
 • YPTN TEMP RQ
 • PROC TEMP RANGE 0°C TO +60°C

Holding at PTNSB

TR	IN	TURN	TIME	MIN ALT	DME LMT
316°	Right	1	2300		

AD ELEV 443
 Bearings are Magnetic
 Elevations in FEET AMSL

NM TO NEXT WPT	RW32	1	1.6	2	3	4	5	PTNSF	0.4			
ALT (3° APCH PATH)	820	1010	1130	1450	1770	2090	2170	2300				



NOTES

CATEGORY	A	B	C	D
LNAV/VNAV	820 (378-2.1)			
LNAV	1010 (567-3.2)			
CIRCLING	1260 (817-2.4)	1290 (847-4.0)	1350 (907-5.0)	
ALTERNATE	(1317-4.4)	(1347-6.0)	(1407-7.0)	

1. MAX IAS:
 INITIAL : 210KT.

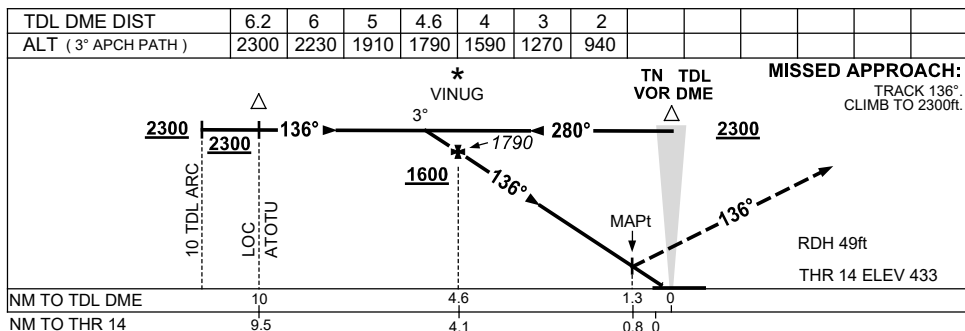
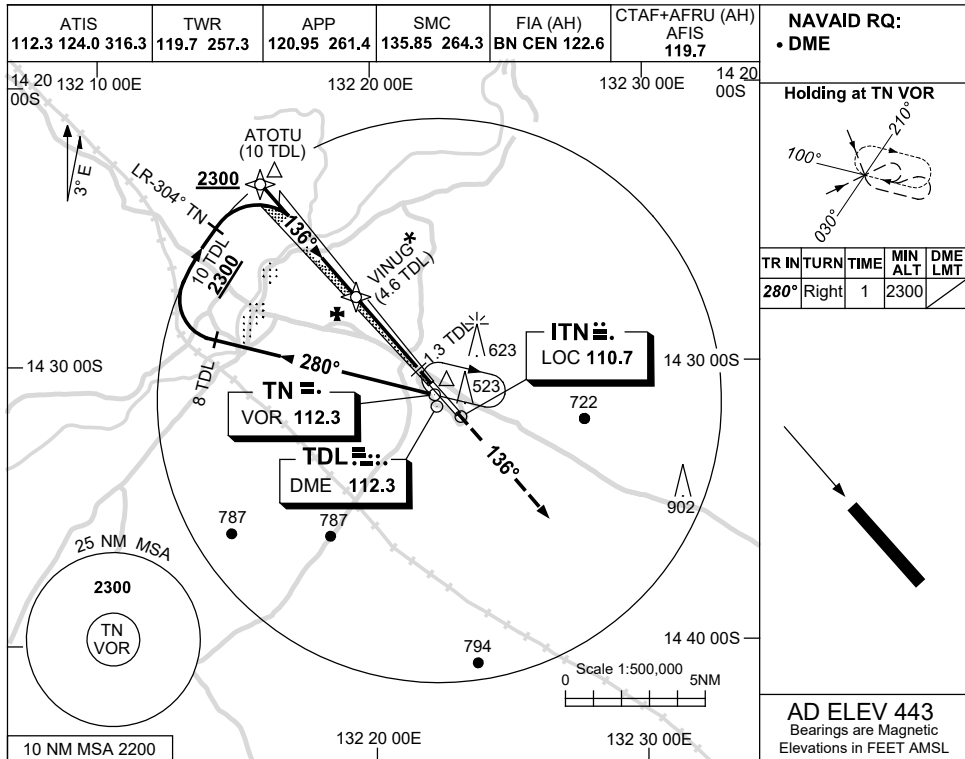
Changes: AFIS, Editorial.

PTNGN02-177

USE QNH

LOC-Z RWY 14
TINDAL, NT (YPTN)

5 SEP 2024



NOTES

*1. ACFT MAY BE RADAR VECTORED TO FAF.

CATEGORY	A	B	C	D
S-I LOC/DME	940 (507-2.0)			
CIRCLING	1260 (817-2.4)	1290 (847-4.0)	1350 (907-5.0)	
ALTERNATE	(1317-4.4)	(1347-6.0)	(1407-7.0)	

Changes: Editorial.

PNTLZ01-180

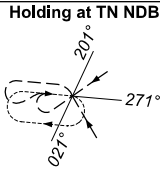
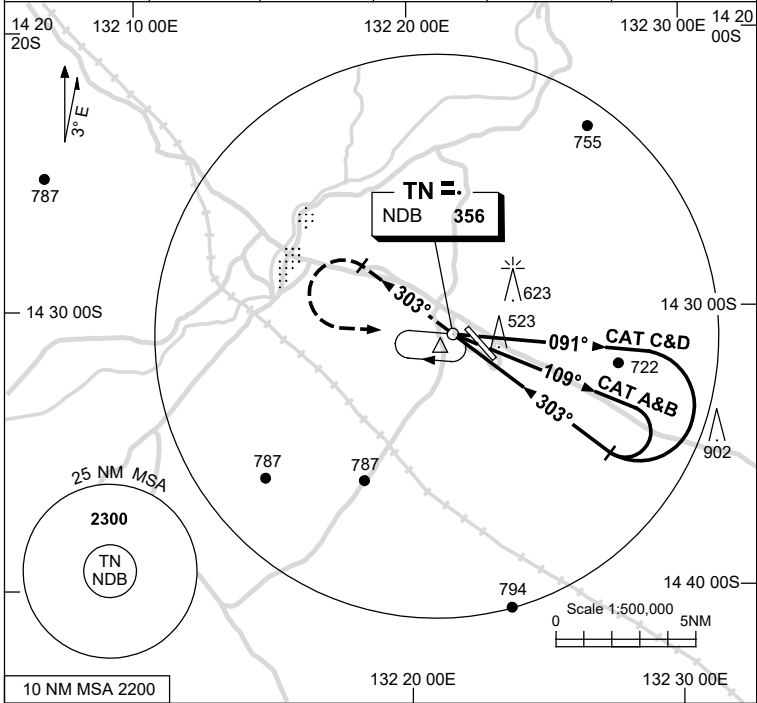
USE QNH

NDB-A
TINDAL, NT (YPTN)

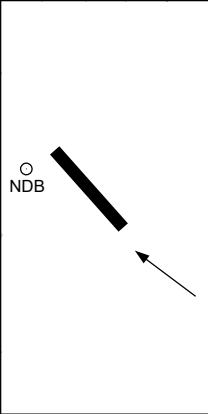
30 NOV 2023

ATIS 112.3 124.0 316.3	TWR 119.7 257.3	APP 120.95 261.4	SMC 135.85 264.3	FIA (AH) BN CEN 122.6	CTAF+AFRU (AH) AFIS 119.7
---------------------------	--------------------	---------------------	---------------------	--------------------------	---------------------------------

Bearings are Magnetic
Elevations in FEET AMSL



TR IN	TURN	TIME	MIN ALT	DME LMT
091°	Right	1	2300	

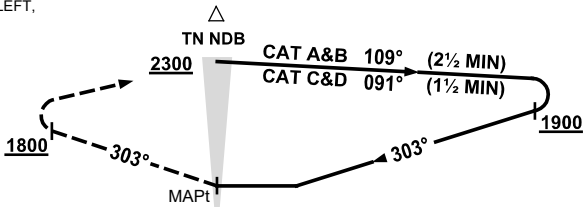


AD ELEV 443

DME DIST																				
ALT	NOT APPLICABLE																			

MISSED APPROACH:

TRACK 303°
AT 1800FT OR ABV TURN LEFT,
TRACK DCT TO NDB.
CLIMB TO 2300FT.



NOTES

1. MAX IAS:
INITIAL : 210KT.

CATEGORY	A	B	C	D
CIRCLING	1260 (817-2.4)		1290 (847-4.0)	1350 (907-5.0)
ALTERNATE	(1317-4.4)		(1347-6.0)	(1407-7.0)

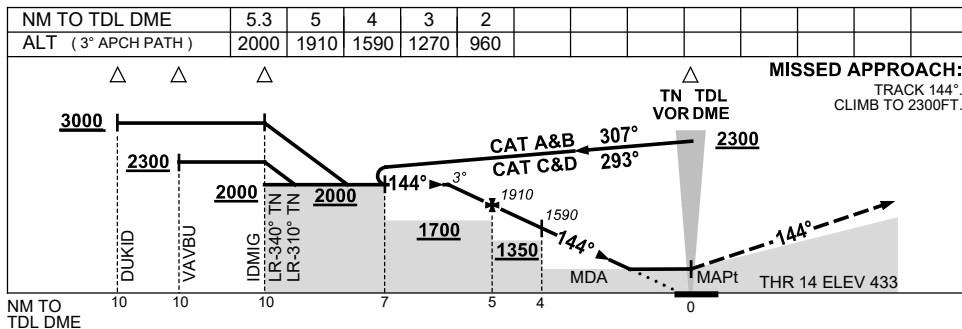
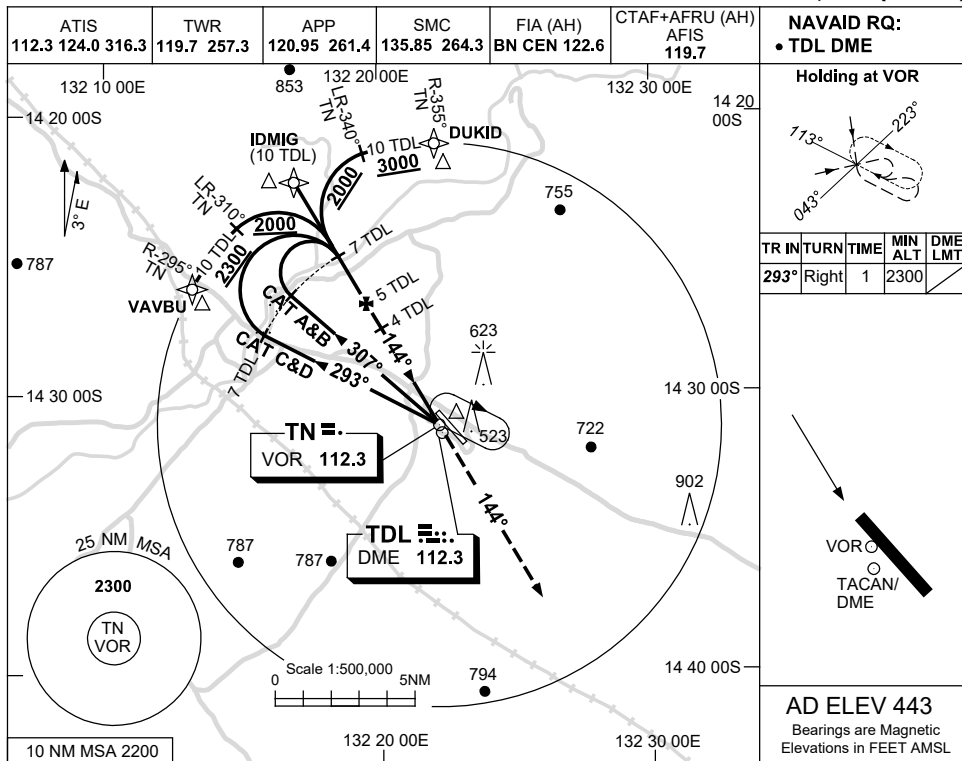
Changes: AFIS, Editorial.

PTNNB01-177

USE QNH

VOR RWY 14
TINDAL, NT (YPTN)

30 NOV 2023



NOTES

CATEGORY	A	B	C	D
S-I VOR/DME	960 (527-3.0)			
CIRCLING	1260 (817-2.4)		1290 (847-4.0)	
ALTERNATE	(1317-4.4)		(1407-7.0)	

1. MAX IAS:
INITIAL : 210KT.

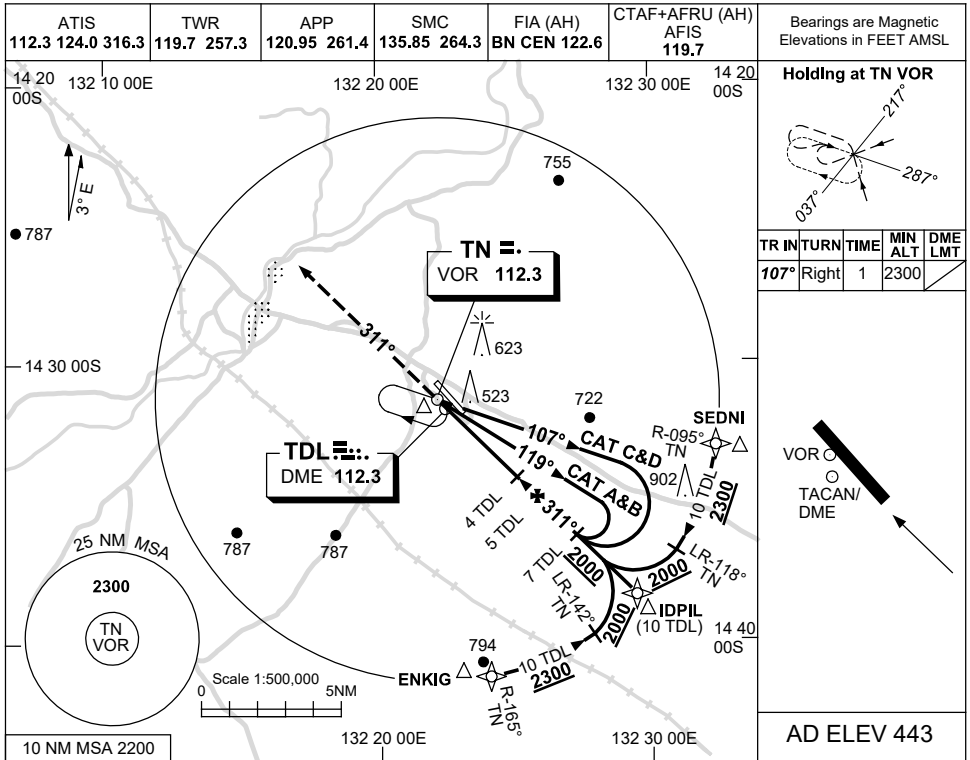
Changes: AFIS, Editorial.

PTNVO01-177

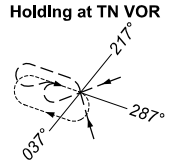
USE QNH

VOR RWY 32
TINDAL, NT (YPTN)

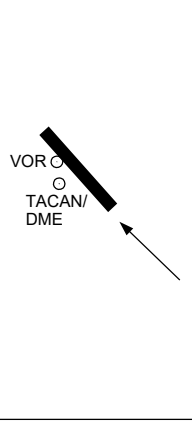
30 NOV 2023



Bearings are Magnetic Elevations in FEET AMSL

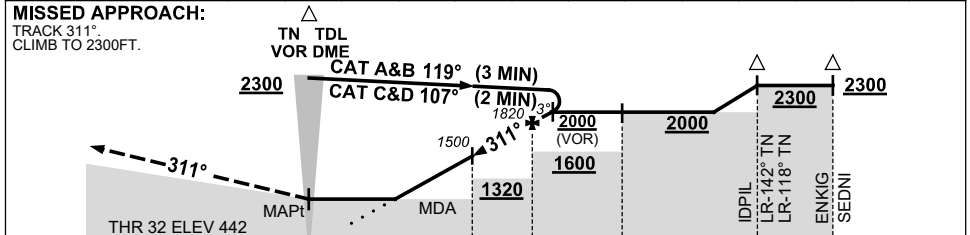


TR IN	TURN	TIME	MIN ALT	DME LMT
107°	Right	1	2300	



AD ELEV 443

NM TO TDL DME	2.5	3	4	5	5.6					
ALT (3° APCH PATH)	1010	1180	1500	1820	2000					



NM TO TDL DME

CATEGORY	A	B	C	D
S-I VOR/DME	1010 (567-3.2)			
S-I VOR	1250 (807-4.6)			
CIRCLING	1260 (817-2.4)	1290 (847-4.0)	1350 (907-5.0)	
ALTERNATE	(1317-4.4)	(1347-6.0)	(1407-7.0)	

NOTES
1. MAX IAS: INITIAL : 210KT.

Changes: AFIS, Editorial.

PTNVO02-177