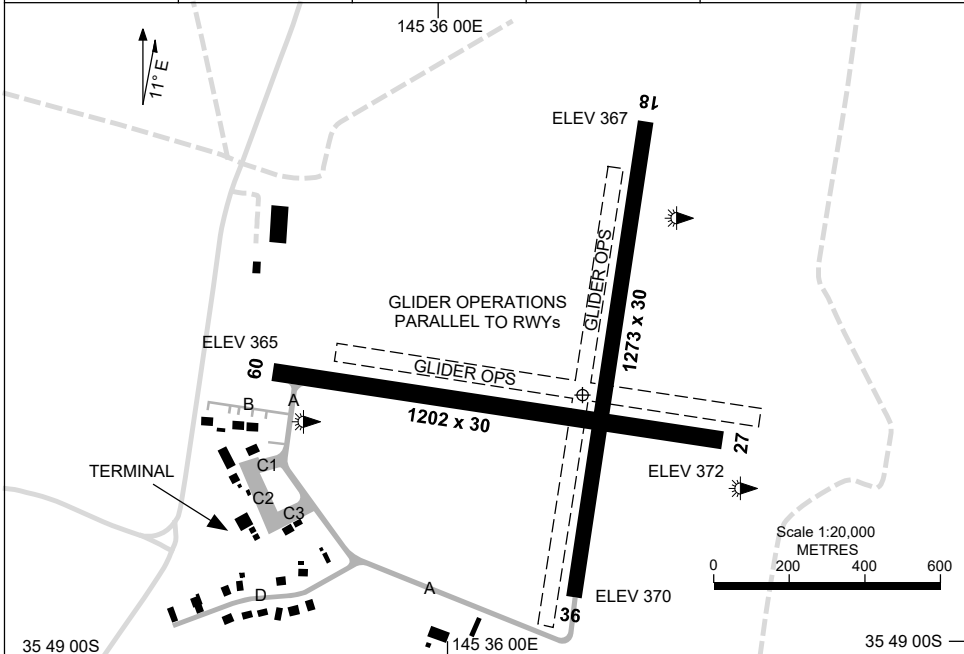


21 MAR 2024

AD ELEV 372  
35 48 39S 145 36 15E

**AERODROME CHART  
TOCUMWAL, NSW (YTOC)**

FIA ML CEN 118.6	CTAF+AFRU 125.5	AFRU+PAL 125.5		Bearings are Magnetic Elevations in FEET AMSL
---------------------	--------------------	-------------------	--	--



RWY		AERODROME LIGHTING
		TAXIWAYS : BLUE EDGE RL : AFRU+PAL 125.5
<b>09</b> <sup>087</sup>		LIRL
<sup>267</sup> <b>27</b>		LIRL
<b>18</b> <sup>177</sup>		NIL
<sup>357</sup> <b>36</b>		NIL

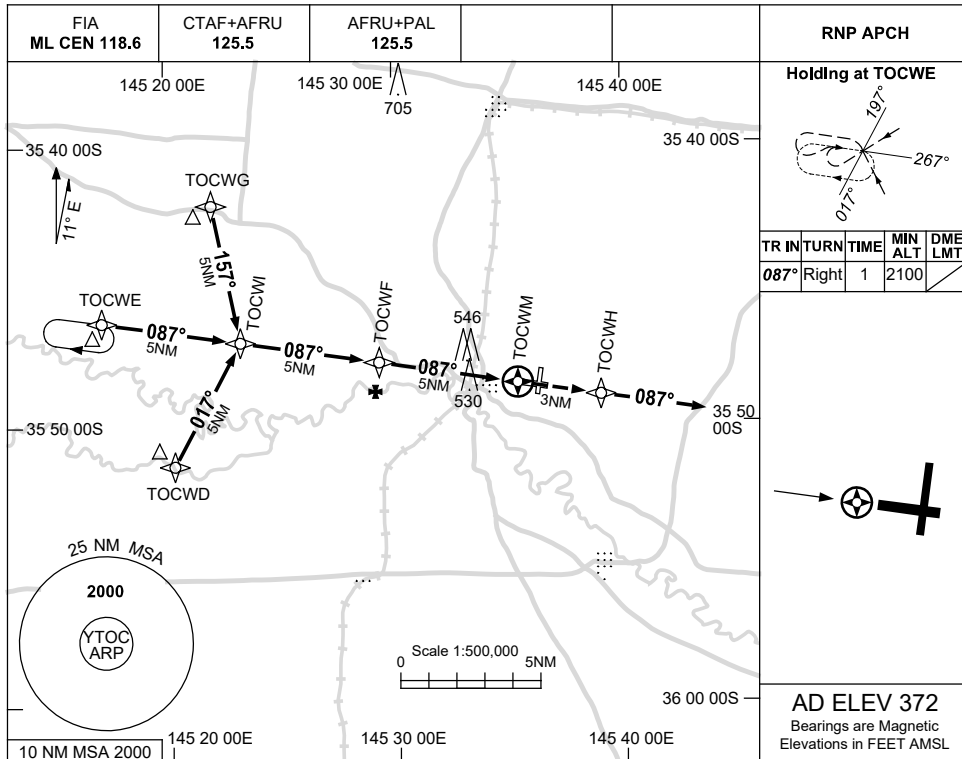
**NOTES**  
1. FIA FREQ 118.6 AVBL 4500FT.

USE QNH

RNP RWY 09

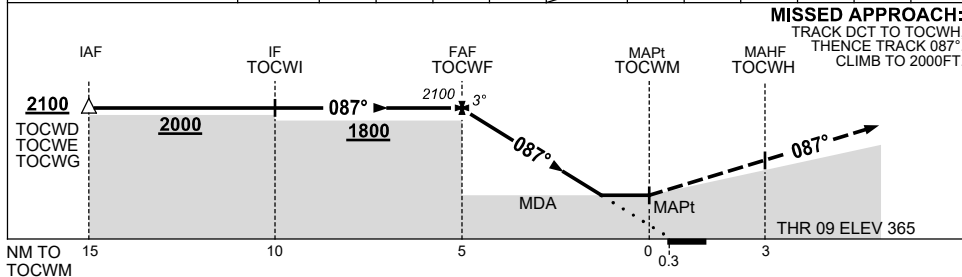
30 NOV 2023

TOCUMWAL, NSW (YTOC)



**AD ELEV 372**  
Bearings are Magnetic  
Elevations in FEET AMSL

NM TO NEXT WPT	TOCWF	4	3	2	1.2	TOCWM				
ALT (3° APCH PATH)	2100	1770	1460	1140	890					



**MISSED APPROACH:**  
TRACK DCT TO TOCWH,  
THENCE TRACK 087°.  
CLIMB TO 2000FT.

**NOTES**

- 1. MAX IAS:  
INITIAL : 210KT.

CATEGORY	A	B	C	D
LNAV	890 (518-2.9)			NOT APPLICABLE
CIRCLING	990 (618-2.4)		1090 (718-4.0)	
ALTERNATE	(1118-4.4)		(1218-6.0)	

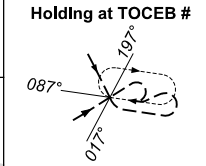
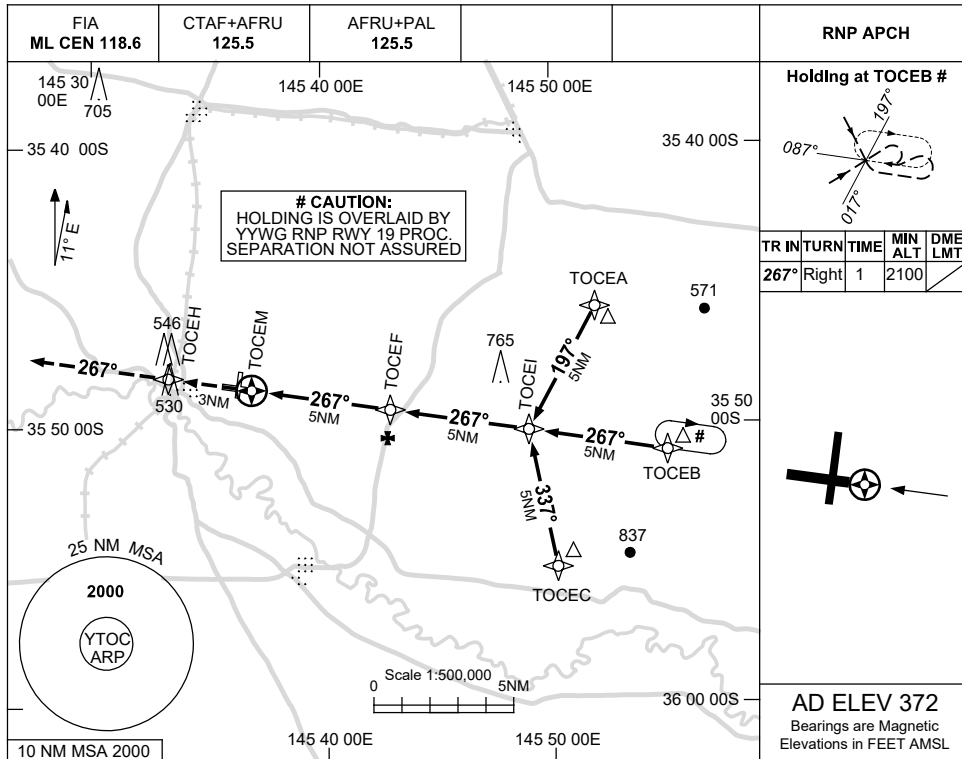
Changes: NEW LOGO, Editorial.

TOCGN01-177

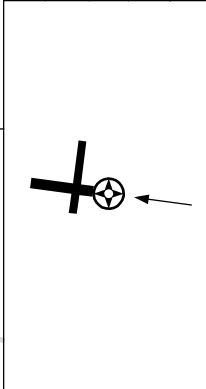
USE QNH

RNP RWY 27  
**TOCUMWAL, NSW (YTOC)**

30 NOV 2023

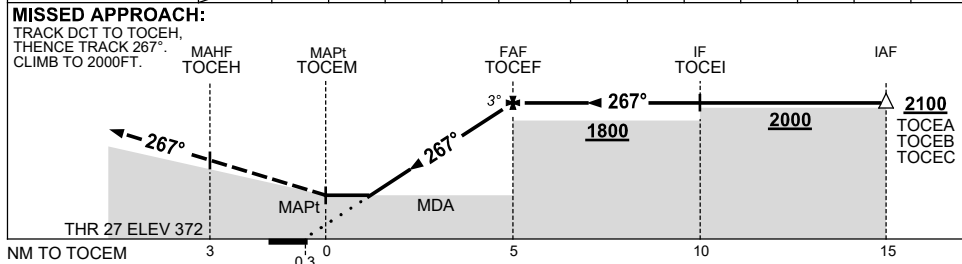


TR	IN	TURN	TIME	MIN ALT	DME LMT
267°	Right	1		2100	



**AD ELEV 372**  
 Bearings are Magnetic  
 Elevations in FEET AMSL

NM TO NEXT WPT	TOCEM	1.4	2	3	4	TOCEF				
ALT (3° APCH PATH)		940	1140	1460	1780	2100				



**NOTES**

CATEGORY	A	B	C	D
LNAV	940 (568-3.2)			NOT APPLICABLE
CIRCLING	990 (618-2.4)		1090 (718-4.0)	
ALTERNATE	(1118-4.4)		(1218-6.0)	

1. MAX IAS:  
 INITIAL : 210KT.

Changes: CAUTION NOTE, NEW LOGO, Editorial.

TOCGN02-177