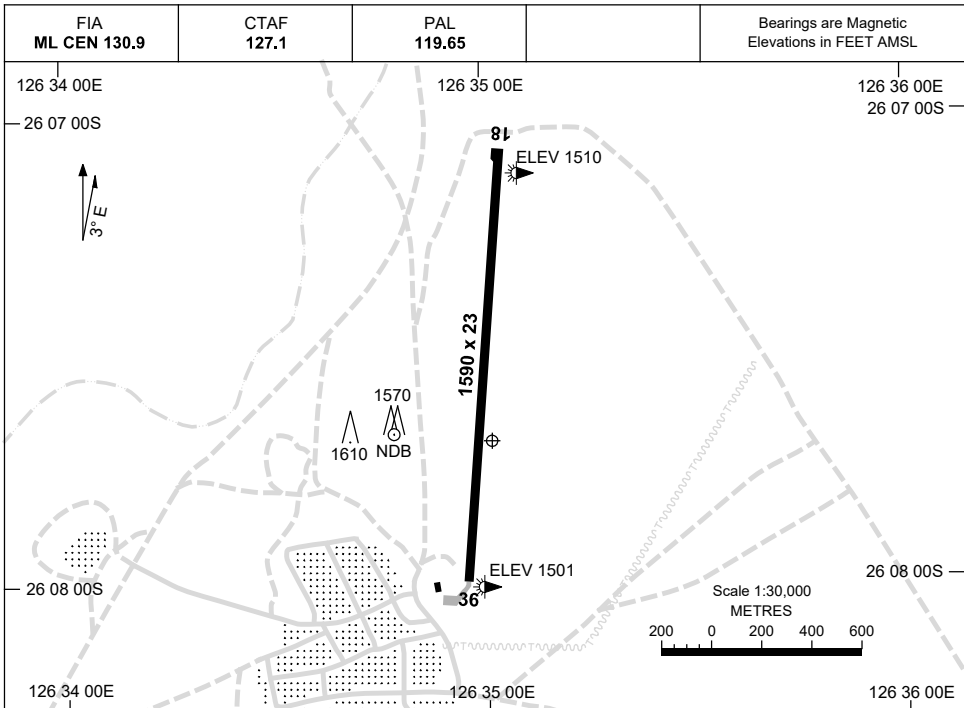


30 NOV 2023

AD ELEV 1510
26 07 42S 126 35 00E

AERODROME CHART
WARBURTON, WA (YWBR)



	AERODROME LIGHTING
RWY	RL : PAL 119.65
18 <small>181</small>	LIRL
<small>001</small> 36	LIRL

NOTES

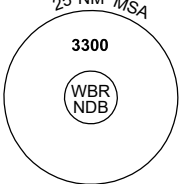
1. AWIS (PHONE) 08 6216 2640

GNSS ARRIVAL PROCEDURES WARBURTON, WA (YWBR)

15 AUG 2019

FIA ML CEN 130.9	CTAF 127.1	PAL 119.65		Bearings are Magnetic Elevations in FEET AMSL
---------------------	---------------	---------------	--	--

25 NM MSA




3300

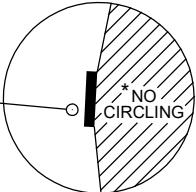
WBR
NDB

10 NM MSA 3200

REFERENCE WAYPOINT WBR NDB
AWIS (PHONE) 08 6216 2640

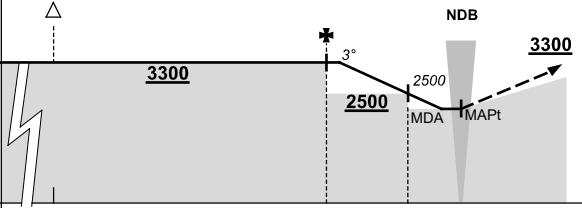


* NO CIRCLING EAST
OF RWY 18/36.



* NO CIRCLING

AD ELEV 1510

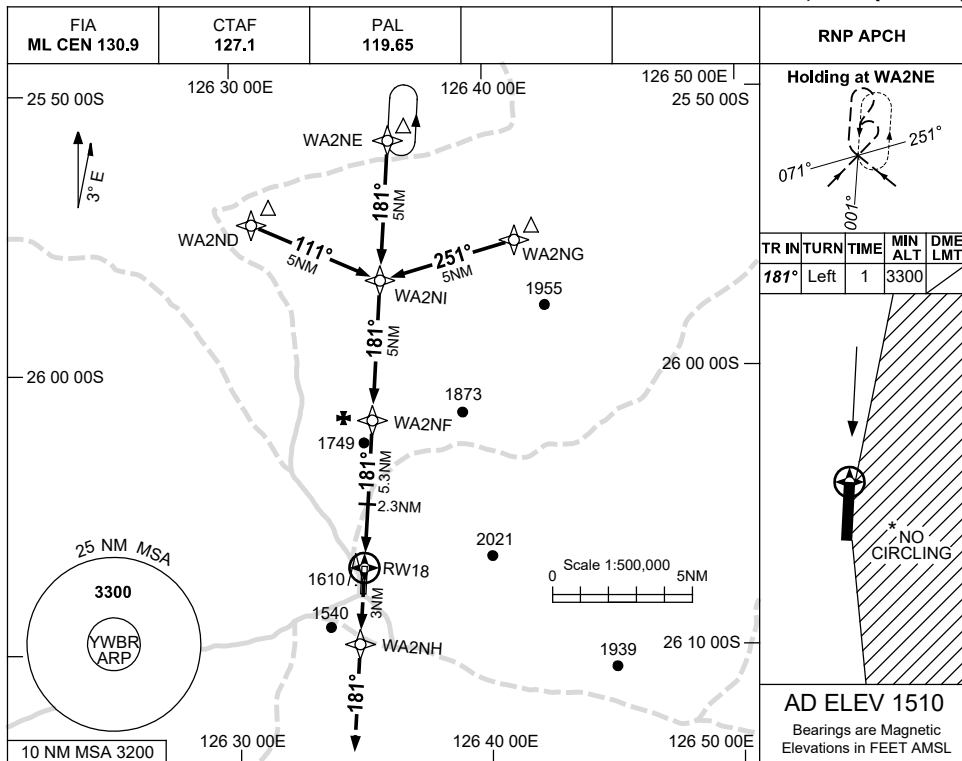
ALL TRACKS TO WBR NDB											MISSED APPROACH: CLIMB ON TRACK TO 3300FT.								
	NM TO WBR NDB	25	15	5	2	0													
CIRCLING MINIMA	A,B: 2180-2.4					C: 2400-4.0		D: N/A											
NM TO WBR NDB	4.5	4	3	2	1.7	1													
ALT (3° APCH PATH)	3300	3140	2820	2500	2400	2180													

Changes: AWIS PHONE, Editorial.

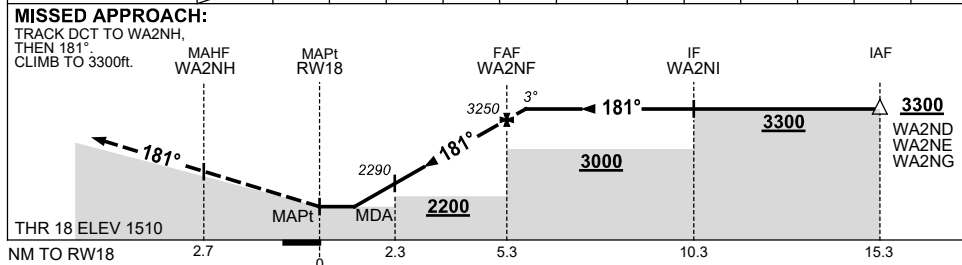
USE QNH

RNP RWY 18
WARBURTON, WA (YWBR)

21 MAR 2024



NM TO NEXT WPT	RW18	1.6	2	2.3	3	4	WA2NF	0.2				
ALT (3° APCH PATH)		2060	2200	2290	2520	2830	3250	3300				



NOTES

CATEGORY	A	B	C	D
LNAV	2060 (550-3.1)			NOT APPLICABLE
CIRCLING *	2180 (670-2.4)	2400 (890-4.0)		
ALTERNATE	(1170-4.4)		(1390-6.0)	

- MAX IAS: INITIAL : 210KT.
- NO CIRCLING EAST OF RWY 18/36.
- AWIS (PHONE) 08 6216 2640

Changes: LNAV, WPT NAMING CONVENTION, CHART TITLE.

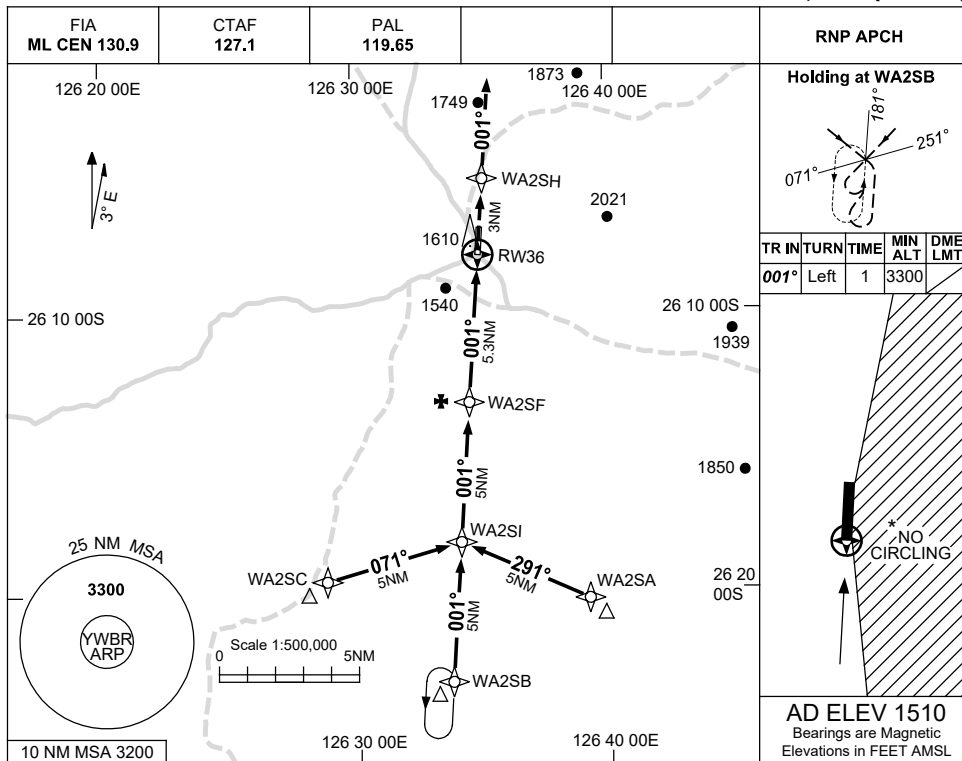
WBRGN01-178

USE QNH

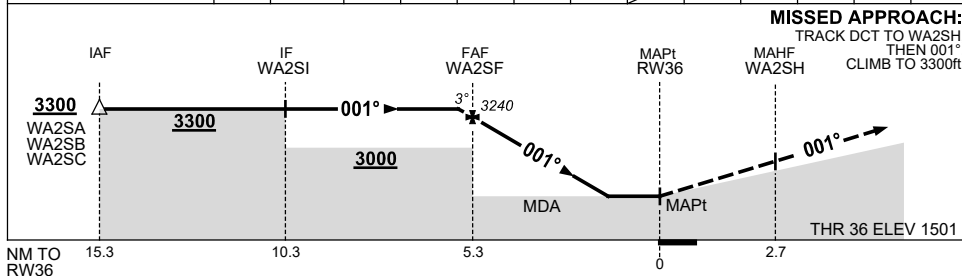
RNP RWY 36

WARBURTON, WA (YWBR)

21 MAR 2024



NM TO NEXT WPT	0.2	WA2SF	5	4	3	2	1.8	RW36					
ALT (3° APCH PATH)	3300	3240	3140	2820	2510	2190	2120						



MISSED APPROACH:
TRACK DCT TO WA2SH,
THEN 001°
CLIMB TO 3300ft.

NOTES

CATEGORY	A	B	C	D
LNAV	2120 (619-3.5)			NOT APPLICABLE
CIRCLING *	2180 (670-2.4)	2400 (890-4.0)		
ALTERNATE	(1170-4.4)		(1390-6.0)	

- MAX IAS:
INITIAL : 210KT.
- * NO CIRCLING EAST OF RWY 18/36.
- AWIS (PHONE)
08 6216 2640

Changes: LNAV, WPT NAMING CONVENTION, CHART TITLE.

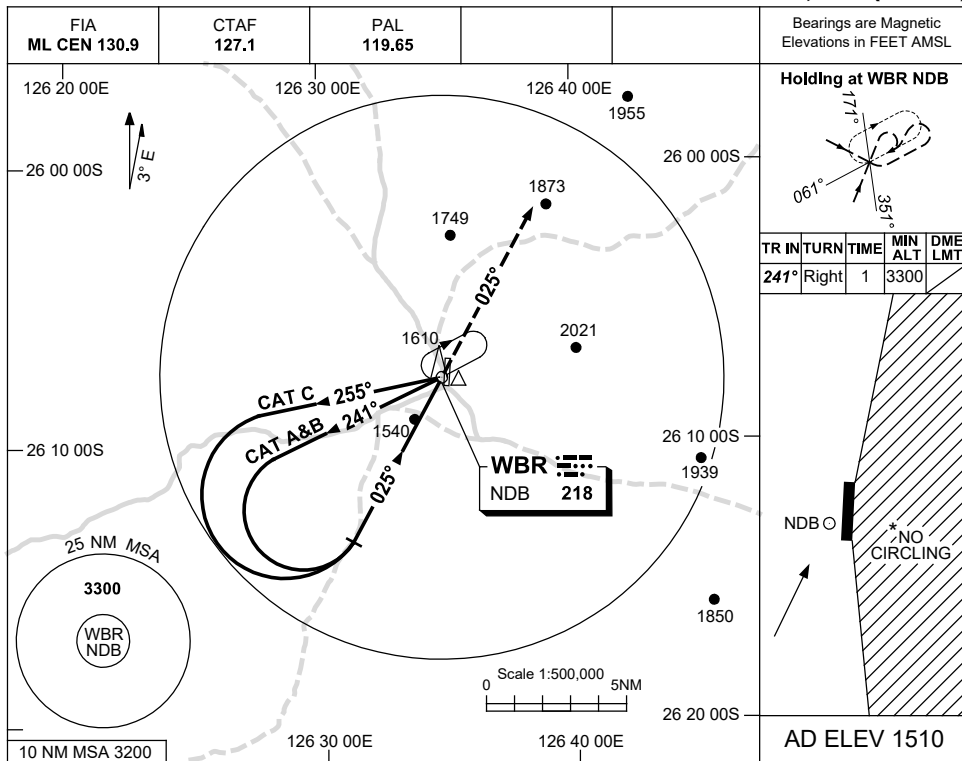
WBRGN02-178

USE QNH

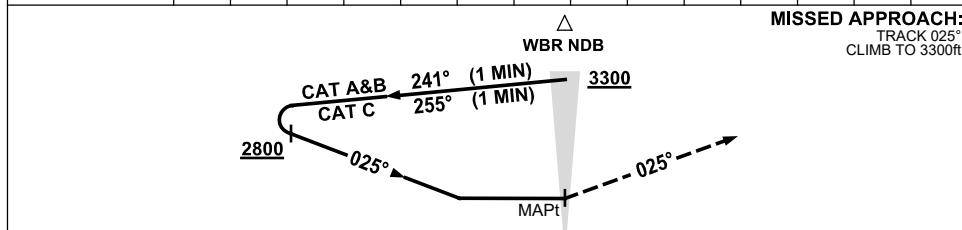
NDB-A

21 MAR 2024

WARBURTON, WA (YWBR)



DME DIST	NOT APPLICABLE									
ALT										



NOTES

CATEGORY	A	B	C	D
				NOT APPLICABLE
CIRCLING *	2180 (670-2.4)		2400 (890-4.0)	
ALTERNATE	(1170-4.4)		(1390-6.0)	

1. MAX IAS:
INITIAL : 210KT.
- *2. NO CIRCLING EAST OF RWY 18/36.
3. AWIS (PHONE)
08 6216 2640

Changes: MAG TRACKS.

WBRNB01-178