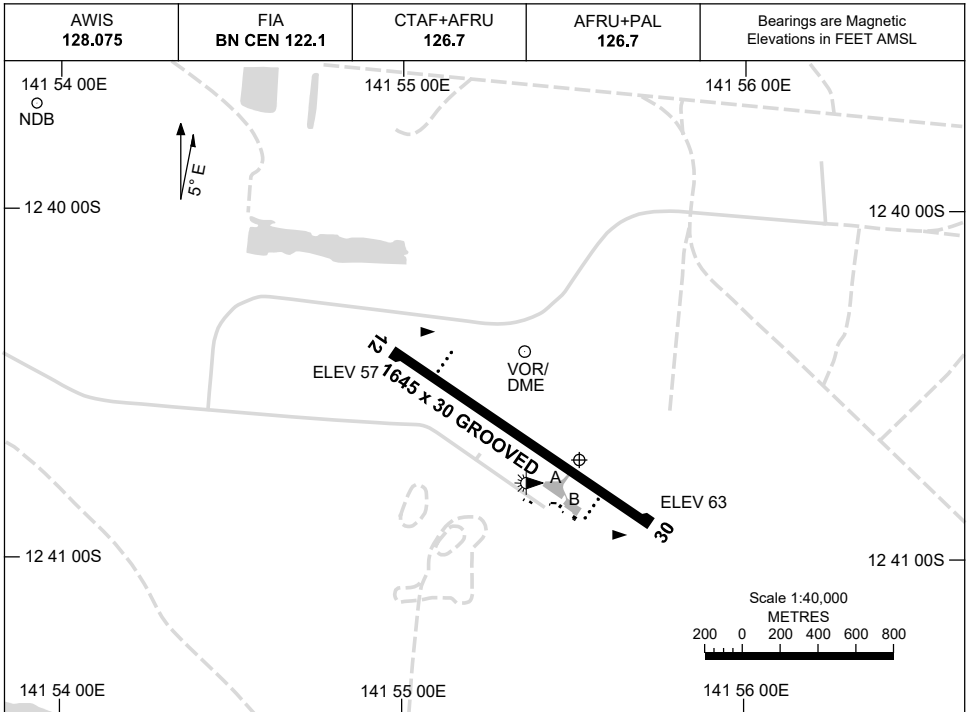


1 DEC 2022

AD ELEV 63  
12 40 43S 141 55 31E

AERODROME CHART  
**WEIPA, QLD (YBWP)**



	<b>AERODROME LIGHTING</b>
<b>RWY</b>	TAXIWAY : BLUE EDGE RL : AFRU+PAL 126.7, SDBY (15 SEC)
<b>12</b> <sup>119</sup>	PAPI 3.0° 45FT LIRL PTBL
<sup>299</sup> <b>30</b>	PAPI 3.0° 46FT LIRL PTBL

**NOTES**

1. FIA FREQ 122.1 AVBL ON GROUND.
2. AWIS REQUIRES 1 SEC PULSE TO ACTIVATE.
3. RWY 12/30 PTBL LIGHTING AVBL DRG EMERG ONLY WITH 2 HR PN.

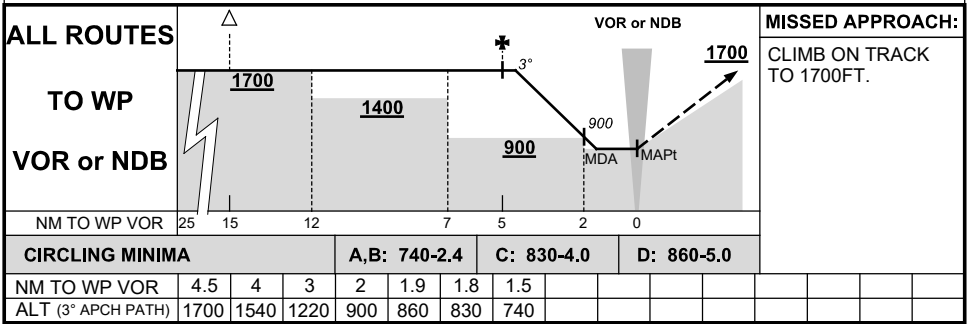
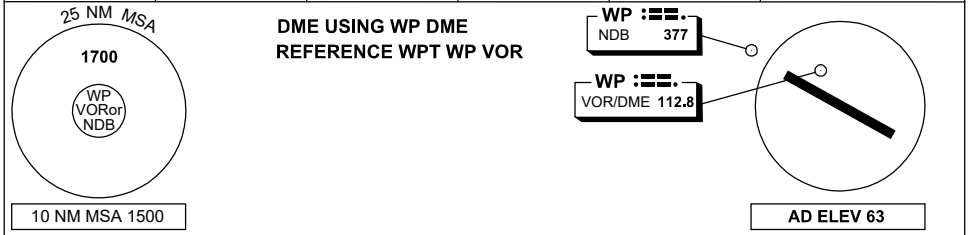
Changes: TWY A AND B ADDED.

BWPAD01-173

# DME or GNSS ARRIVAL PROCEDURES WEIPA, QLD (YBWP)

21 MAY 2020

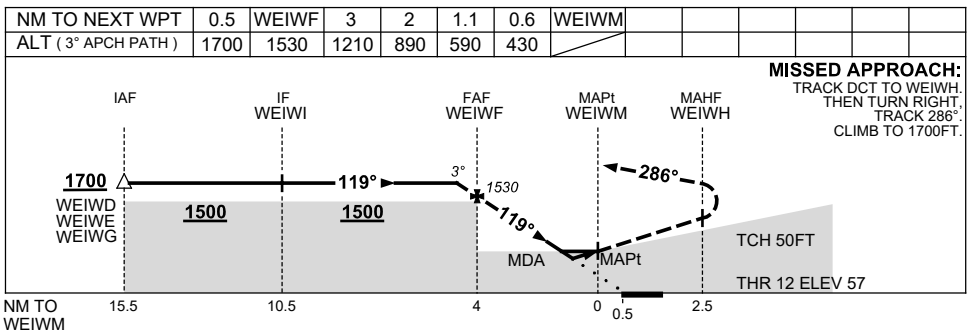
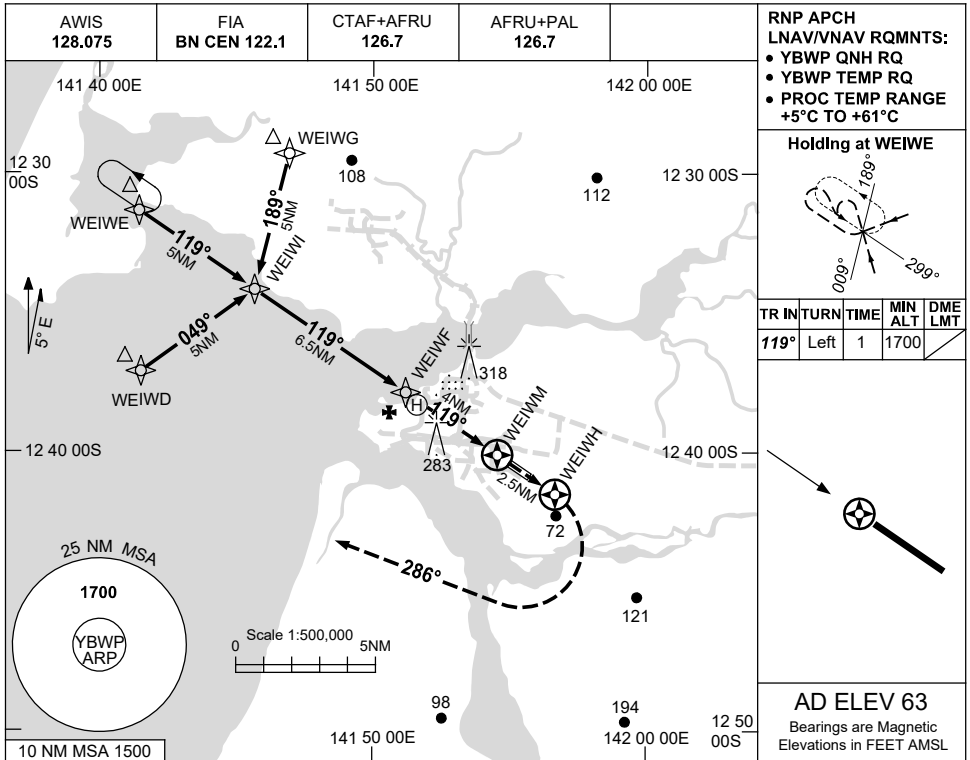
AWIS 128.075	FIA BN CEN 122.1	CTAF+AFRU 126.7	AFRU+PAL 126.7		Bearings are Magnetic Elevations in FEET AMSL
-----------------	---------------------	--------------------	-------------------	--	--



USE QNH

RNP RWY 12  
WEIPA, QLD (YBWP)

24 MAR 2022



**NOTES**

CATEGORY	A	B	C	D
LNAV/VNAV	<b>430</b> (373-2.1)			
LNAV	<b>590</b> (533-3.0)			
CIRCLING	<b>740</b> (677-2.4)		<b>830</b> (767-4.0) <b>860</b> (797-5.0)	
ALTERNATE	(1177-4.4)		(1267-6.0) (1297-7.0)	

1. MAX IAS:  
INITIAL : 210KT.

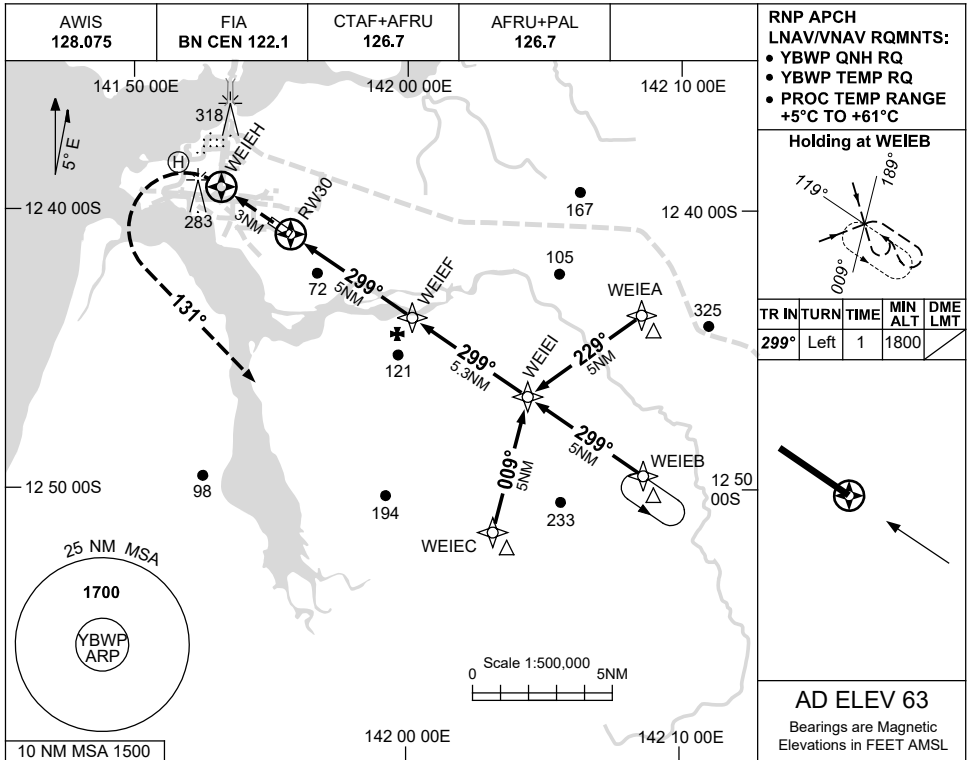
Changes: CHART TITLE, PBN SPECIFICATION BOX.

BWPGN01-170

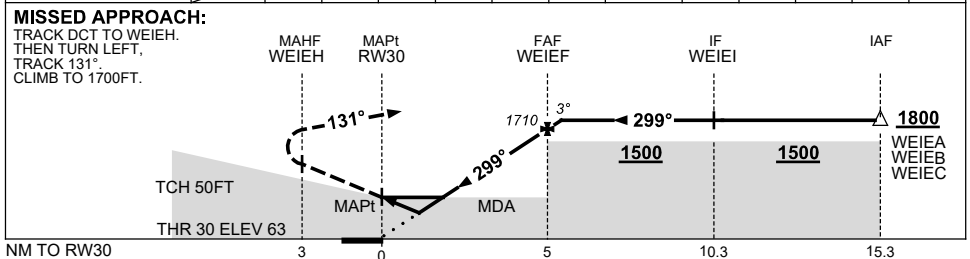
USE QNH

RNP RWY 30  
WEIPA, QLD (YBWP)

24 MAR 2022



NM TO NEXT WPT	RW30	1	1.5	1.6	2	3	4	WEIEF	0.3			
ALT (3° APCH PATH)		430	610	620	750	1070	1390	1710	1800			



**NOTES**

CATEGORY	A	B	C	D
LNAV/VNAV	<b>430</b> (367-2.1)			
LNAV	<b>620</b> (557-3.2)			
CIRCLING	<b>740</b> (677-2.4)	<b>830</b> (767-4.0)		<b>860</b> (797-5.0)
ALTERNATE	(1177-4.4)		(1297-7.0)	

1. MAX IAS:  
INITIAL : 210KT.

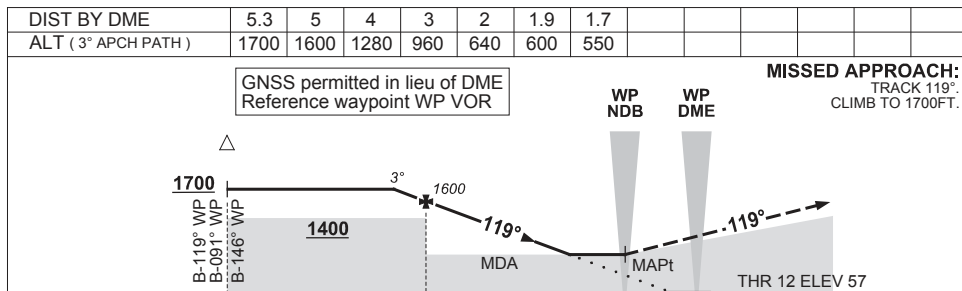
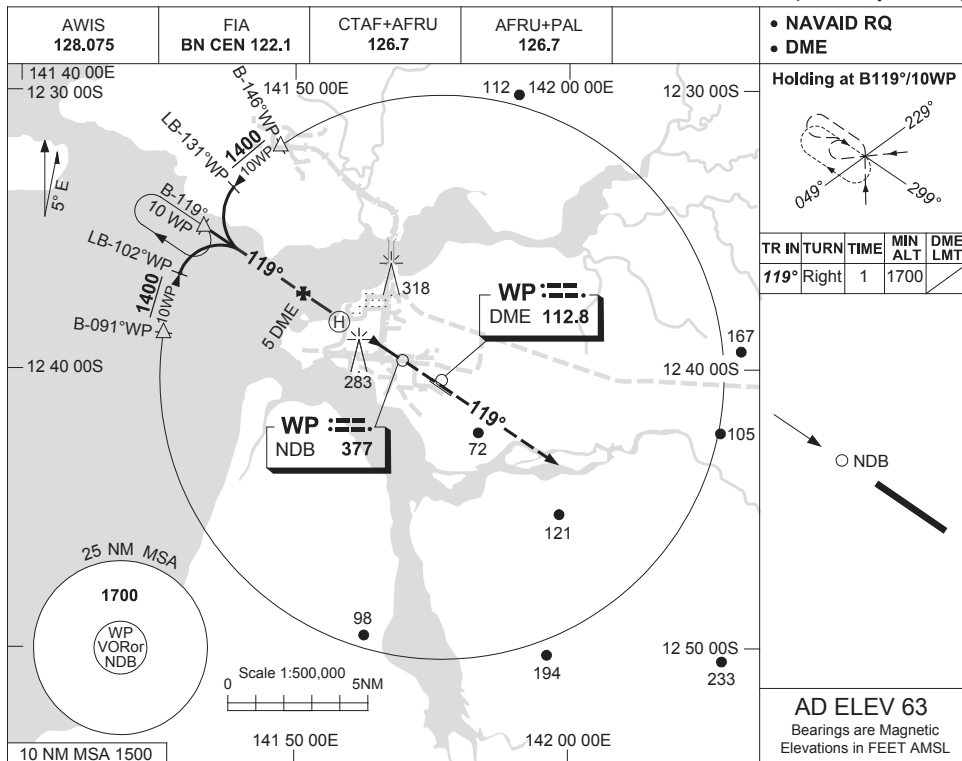
Changes: CHART TITLE, PBN SPECIFICATION BOX.

BWPGN02-170

USE QNH

NDB-Z RWY 12  
WEIPA, QLD (YBWP)

25 MAR 2021



NM TO WP DME	10	5	1.6	0	
--------------	----	---	-----	---	--

**NOTES**

1. MAX IAS:  
INITIAL : 210KT.

CATEGORY	A	B	C	D
S-I NDB/DME	<b>550 (487-2.7)</b>			
CIRCLING	<b>740 (677-2.4)</b>	<b>830 (767-4.0)</b>	<b>860 (797-5.0)</b>	
ALTERNATE	(1177-4.4)	(1267-6.0)	(1297-7.0)	

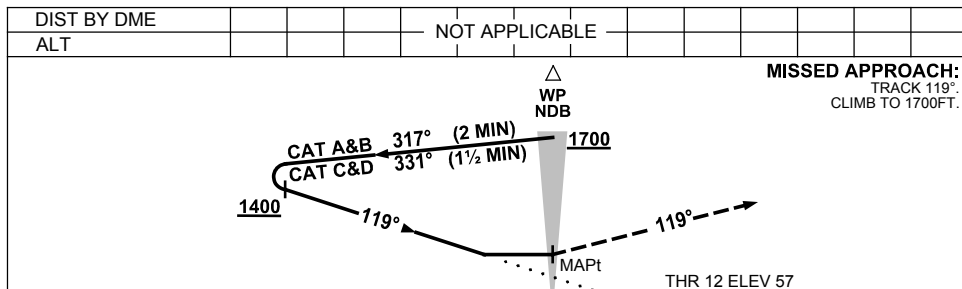
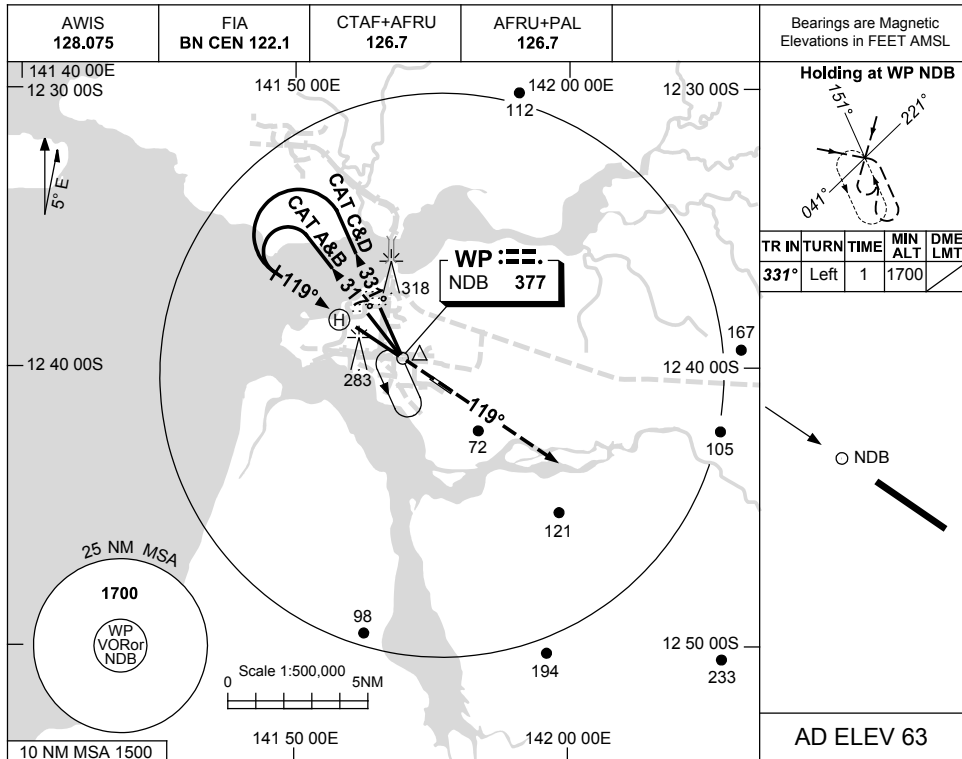
Changes: 283FT SINGLE LIT OBST, 318FT LIT OBST.

BWPNB01-166

USE QNH

NDB-Y RWY 12  
WEIPA, QLD (YBWP)

25 MAR 2021



**NOTES**

CATEGORY	A	B	C	D
S-I NDB	<b>600 (537-3.0)</b>			
CIRCLING	<b>740 (677-2.4)</b>	<b>830 (767-4.0)</b>	<b>860 (797-5.0)</b>	
ALTERNATE	(1177-4.4)	(1267-6.0)	(1297-7.0)	

1. MAX IAS:  
INITIAL : 210KT.

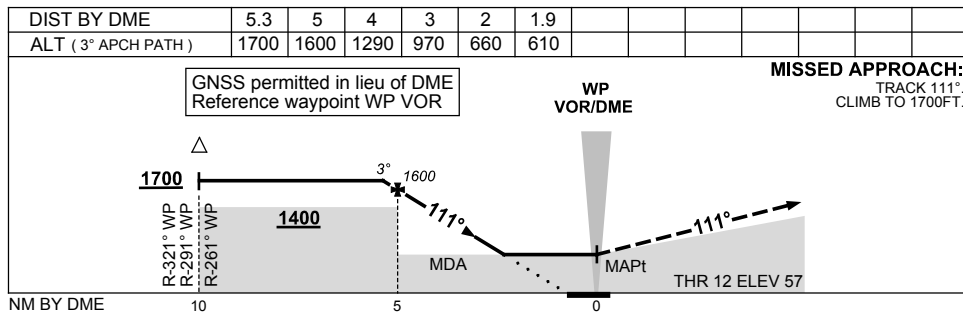
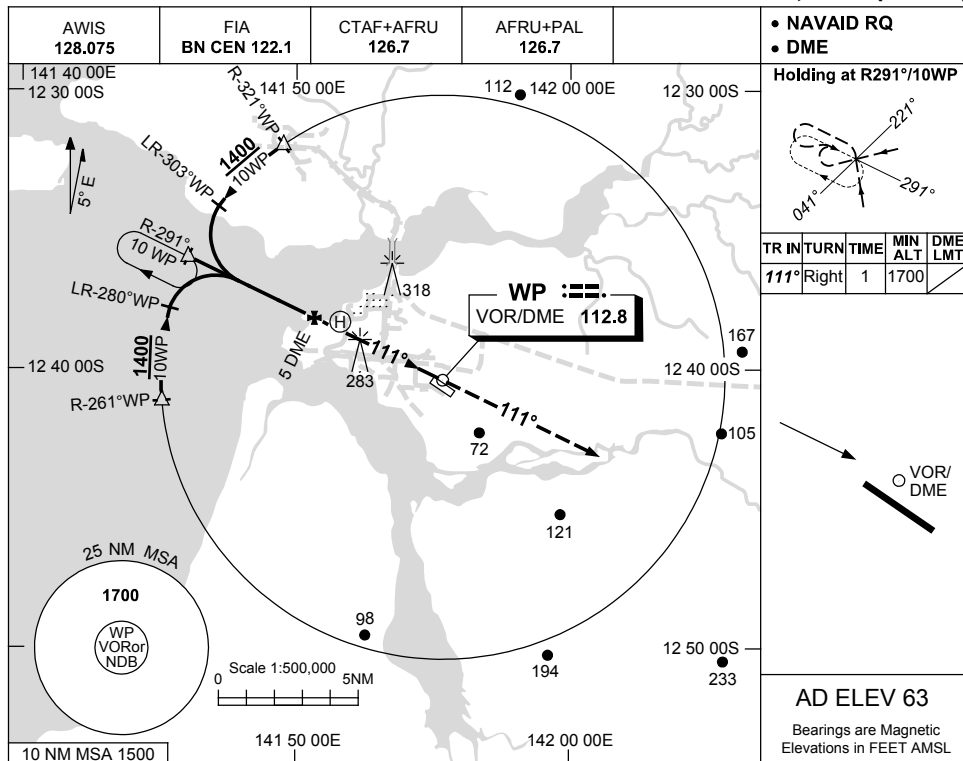
Changes: 283FT SINGLE LIT OBST, 318FT LIT OBST.

BWPNB02-166

USE QNH

VOR-Z RWY 12  
WEIPA, QLD (YBWP)

25 MAR 2021



**NOTES**

CATEGORY	A	B	C	D
S-I VOR/DME	<b>610 (547-3.0)</b>			
CIRCLING	<b>740 (677-2.4)</b>	<b>830 (767-4.0)</b>	<b>860 (797-5.0)</b>	
ALTERNATE	(1177-4.4)	(1267-6.0)	(1297-7.0)	

1. MAX IAS:  
INITIAL : 210KT.

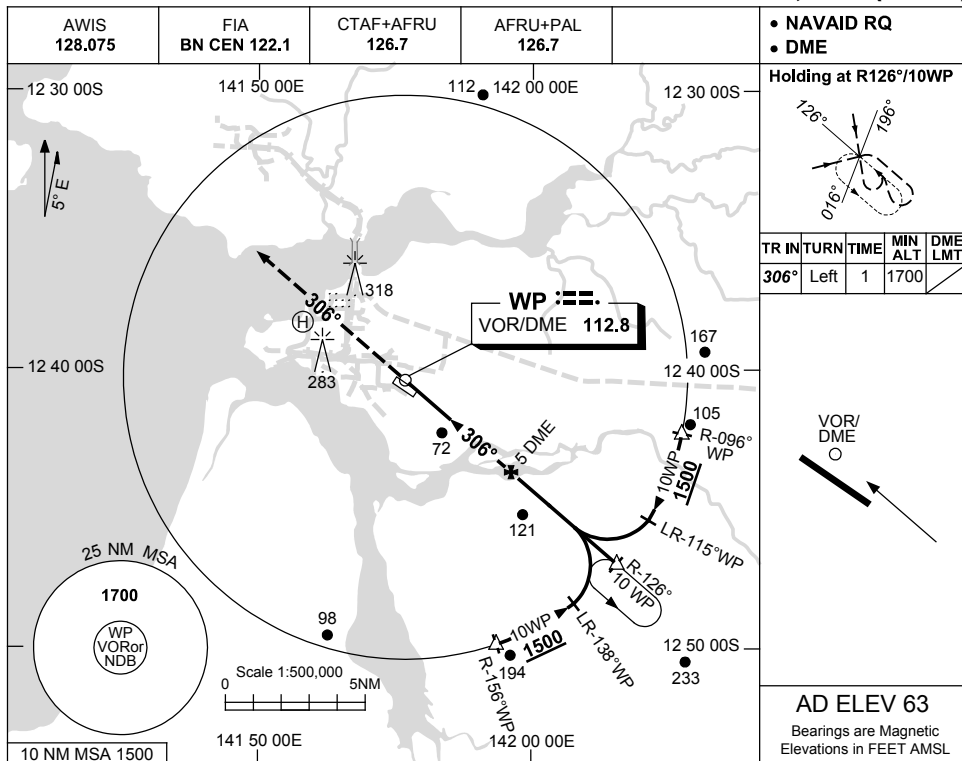
Changes: 283FT SINGLE LIT OBST, 318FT LIT OBST, COORD FORMAT.

BWPV001-166

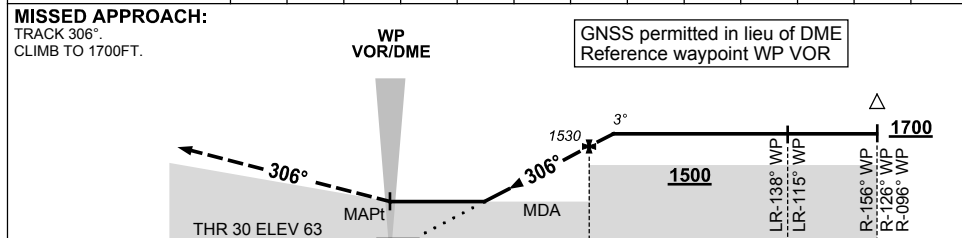
USE QNH

VOR-Z RWY 30  
WEIPA, QLD (YBWP)

25 MAR 2021



DIST BY DME	2.1	2.5	3	4	5	5.5						
ALT (3° APCH PATH)	610	740	890	1210	1530	1700						



**NOTES**

CATEGORY	A	B	C	D
S-I VOR/DME	<b>610 (547-3.0)</b>			
CIRCLING	<b>740 (677-2.4)</b>	<b>830 (767-4.0)</b>	<b>860 (797-5.0)</b>	
ALTERNATE	(1177-4.4)	(1267-6.0)	(1297-7.0)	

1. MAX IAS:  
INITIAL : 210KT.

Changes: 283FT SINGLE LIT OBST, 318FT LIT OBST.

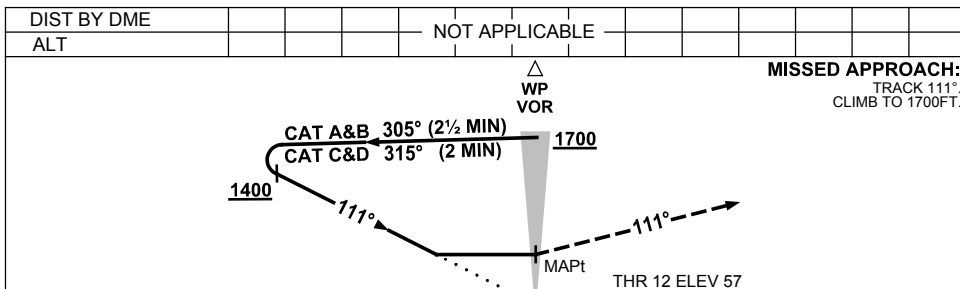
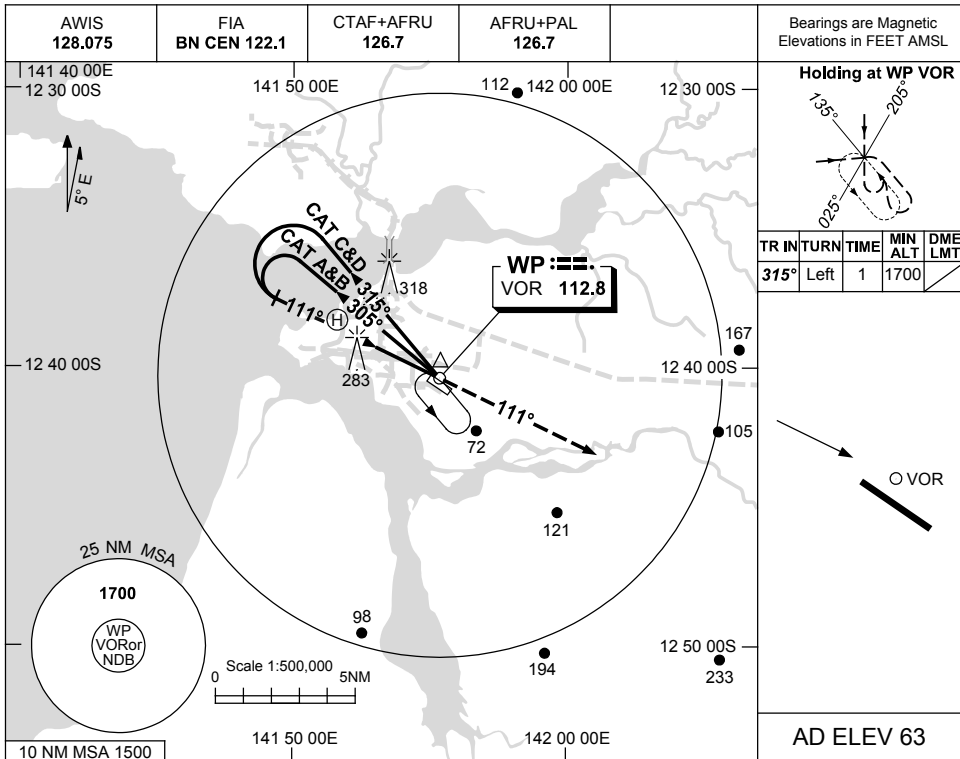
BWPV002-166



USE QNH

VOR-Y RWY 12  
WEIPA, QLD (YBWP)

25 MAR 2021



**NOTES**

CATEGORY	A	B	C	D
S-I VOR	<b>660 (597-3.3)</b>			
CIRCLING	<b>740 (677-2.4)</b>	<b>830 (767-4.0)</b>	<b>860 (797-5.0)</b>	
ALTERNATE	(1177-4.4)	(1267-6.0)	(1297-7.0)	

1. MAX IAS:  
INITIAL : 210KT.

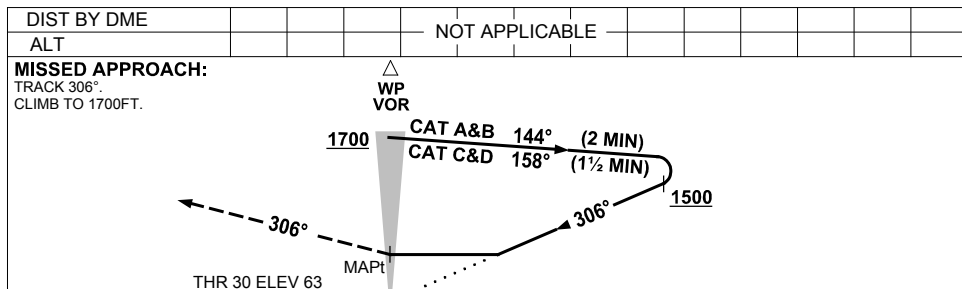
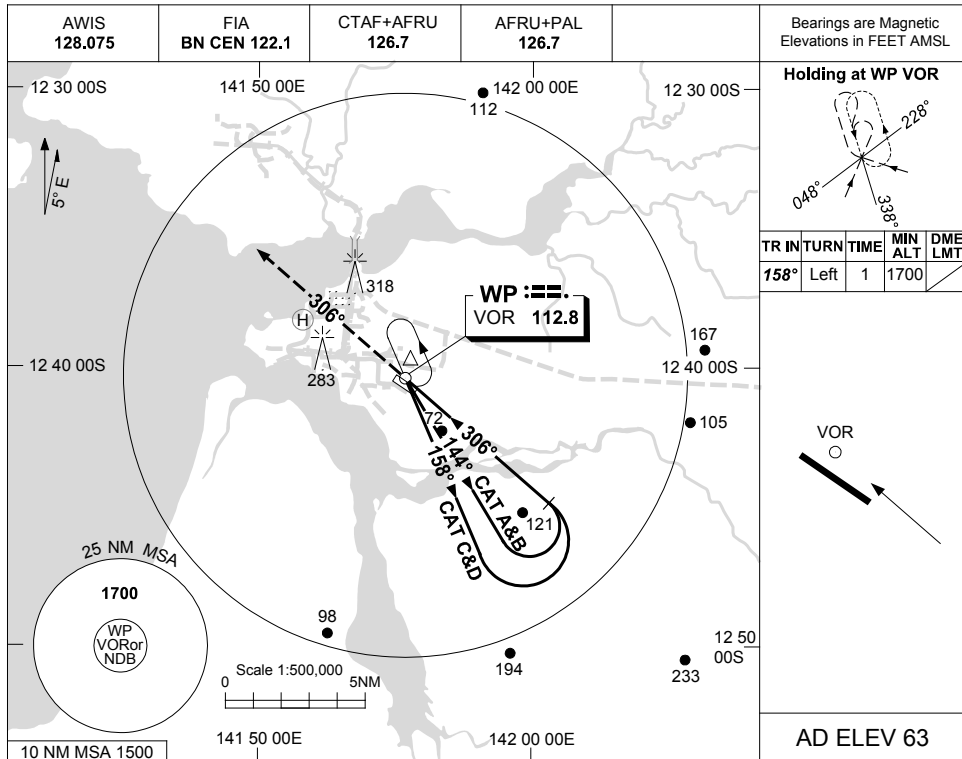
Changes: 283FT SINGLE LIT OBST, 318FT LIT OBST.

BWPV003-166

USE QNH

VOR-Y RWY 30  
WEIPA, QLD (YBWP)

25 MAR 2021



**NOTES**

CATEGORY	A	B	C	D
S-I VOR	740 (677-3.8)			
CIRCLING	740 (677-2.4)	830 (767-4.0)	860 (797-5.0)	
ALTERNATE	(1177-4.4)	(1267-6.0)	(1297-7.0)	

1. MAX IAS:  
INITIAL : 210KT.

Changes: 283FT SINGLE LIT OBST, 318FT LIT OBST.

BWPV004-166