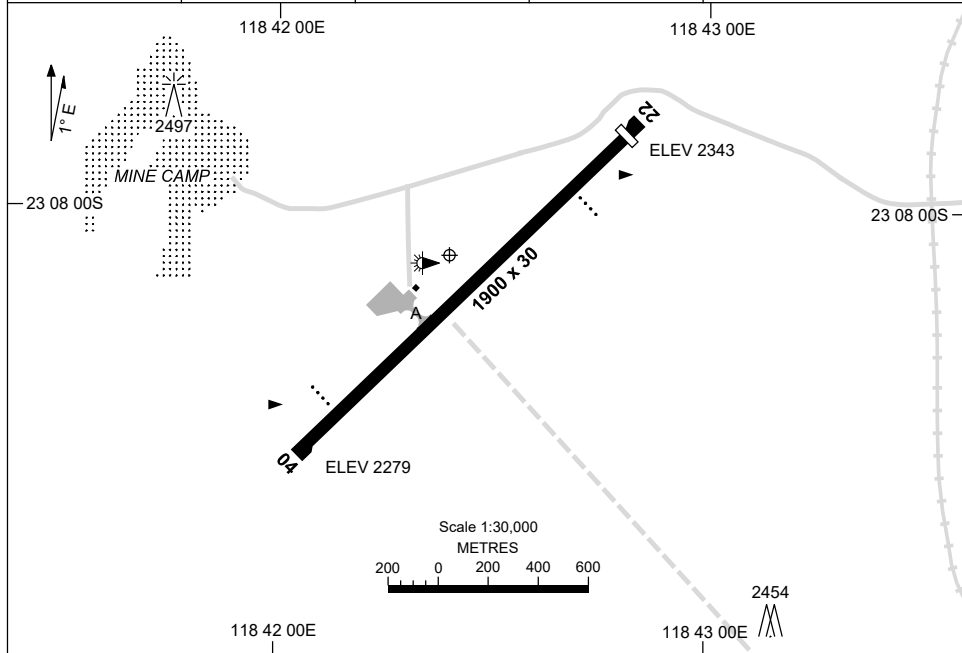


5 SEP 2024

AD ELEV 2346
23 08 06S 118 42 24E

AERODROME CHART
WEST ANGELAS, WA (YANG)

AWIS 133.875	FIA ML CEN 128.15	CTAF+AFRU 127.05	PAL+AA 119.65	Bearings are Magnetic Elevations in FEET AMSL
-----------------	----------------------	---------------------	------------------	--



	AERODROME LIGHTING
RWY	TAXIWAY : BLUE EDGE RL : PAL+AA 119.65 , EMERG ONLY , SDBY (10 SEC)
04 ⁰⁴⁵	PAPI 3.3° 53FT LIRL
²²⁵ 22	PAPI 3.3° 53FT LIRL

NOTES

1. AFRU NOT AVBL ON GROUND.
2. FIA FREQ 128.15 AVBL IN CIRCUIT AREA.

Changes: RWY STARTER EXTENSIONS REMOVED, Editorial.

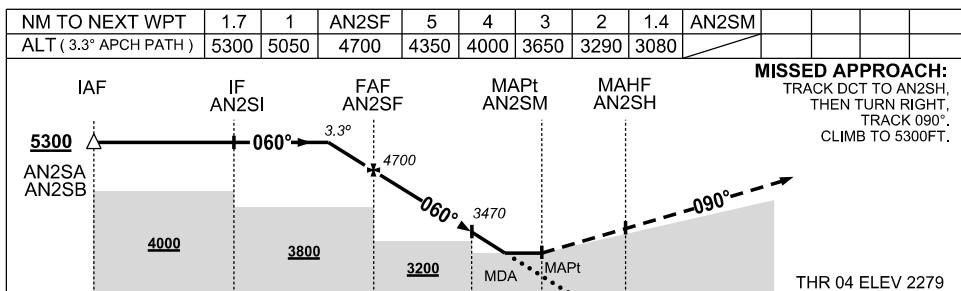
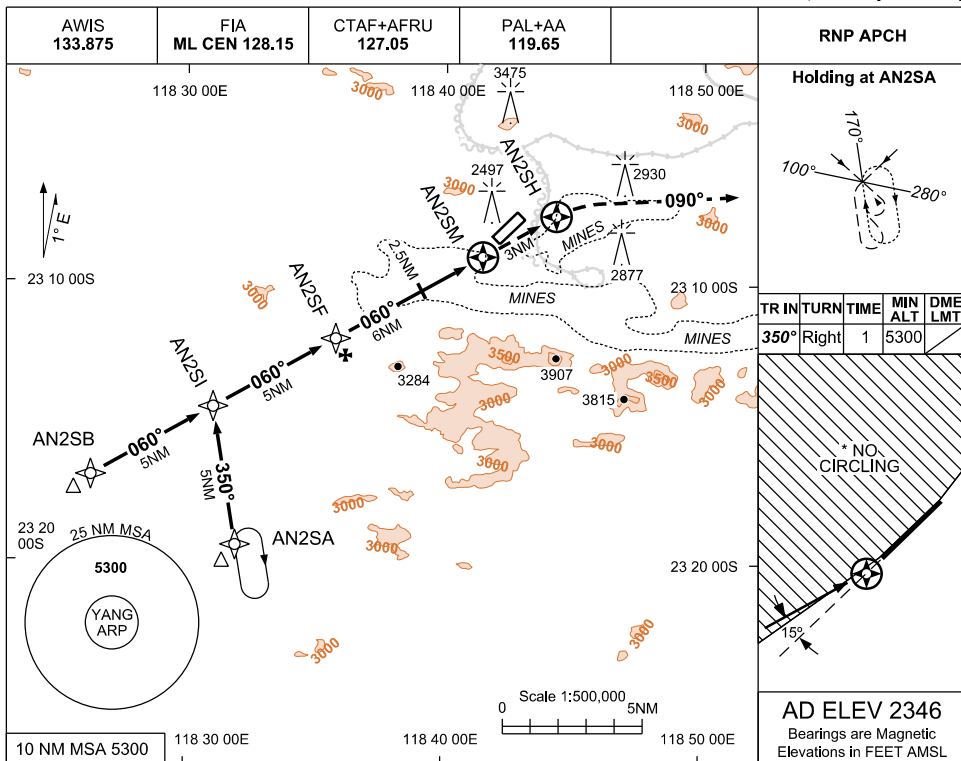
ANGAD01-180

USE QNH

RNP RWY 04

30 NOV 2023

WEST ANGELAS, WA (YANG)



NOTES

- MAX IAS : INITIAL : 210KT.
- NO CIRCLING NORTH WEST OF RWY 04/22.
- CHECK BLASTING TIMES WITH A/D OPR.
- COONDEWANNA A/D 11NM NORTH EAST.
- COLOUR: SEE SPEC NOTICES.

CATEGORY	A	B	C	D
LNAV	3080 (801-4.6)			NOT AUTHORISED
CIRCLING *	3310 (964-2.4)		NOT AUTHORISED	
ALTERNATE	(1464-4.4)		NOT APPLICABLE	

Changes: CHART TITLE, WPT IDENT, PBN SPECIFICATION BOX, EDITORIAL

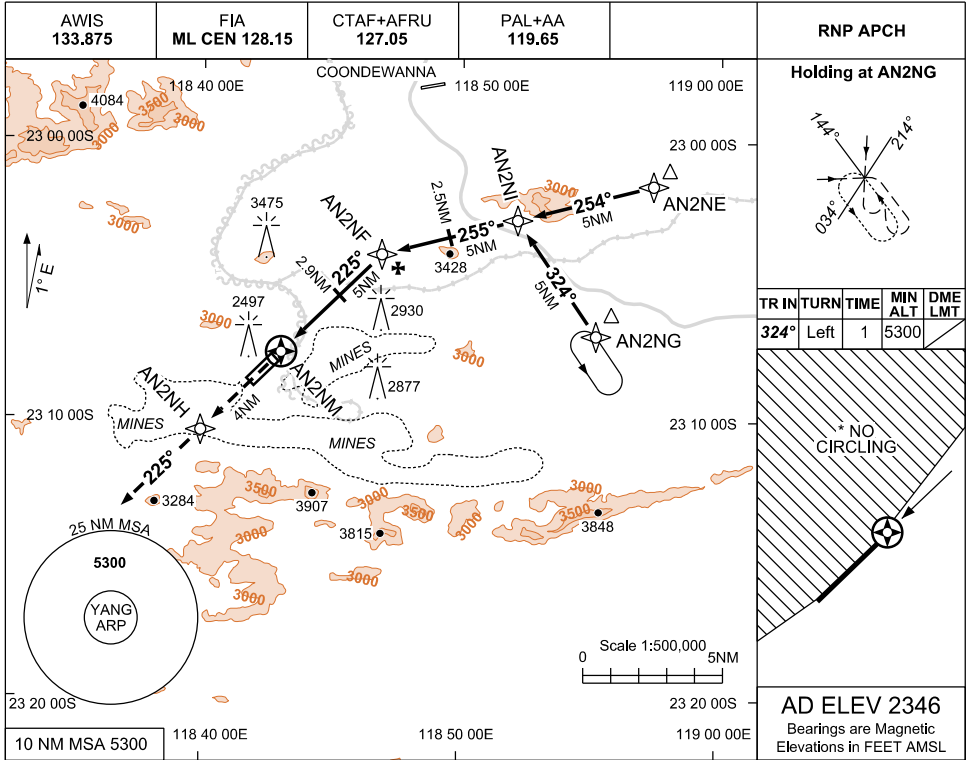
ANGGN01-177

USE QNH

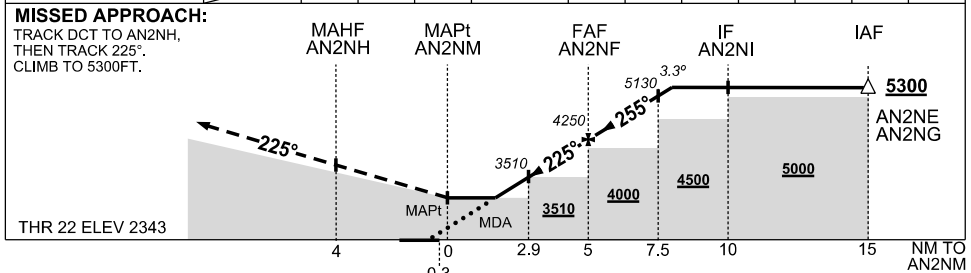
RNP RWY 22

30 NOV 2023

WEST ANGELAS, WA (YANG)



NM TO NEXT WPT	AN2NM	2.2	3	4	AN2NF	1	2	3			
ALT (3.3° APCH PATH)		3260	3550	3900	4250	4600	4950	5300			



CATEGORY	A	B	C	D
LNAV (2.5% MAP)	3310 (964-5.0)			NOT AUTHORISED
# LNAV (3% MAP)	3260 (914-5.0)			
CIRCLING *	3310 (964-2.4)		NOT AUTHORISED	
ALTERNATE	(1464-4.4)		NOT APPLICABLE	

*2. NO CIRCLING NORTH WEST OF RWY 04/22.
#3. MIN MAP GRAD 3% TO 3500FT THEN 2.5%.
4. CHECK BLASTING TIMES WITH A/D OPR
5. COLOUR: SEE SPEC NOTICES

Changes: CHART TITLE, WPT IDENT, PBN SPECIFICATION BOX, EDITORIAL

ANGGN02-177