

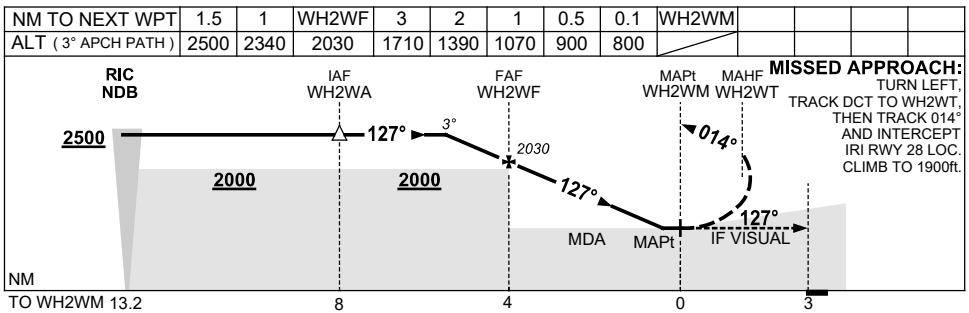
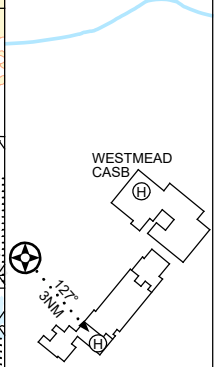
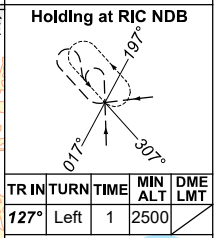
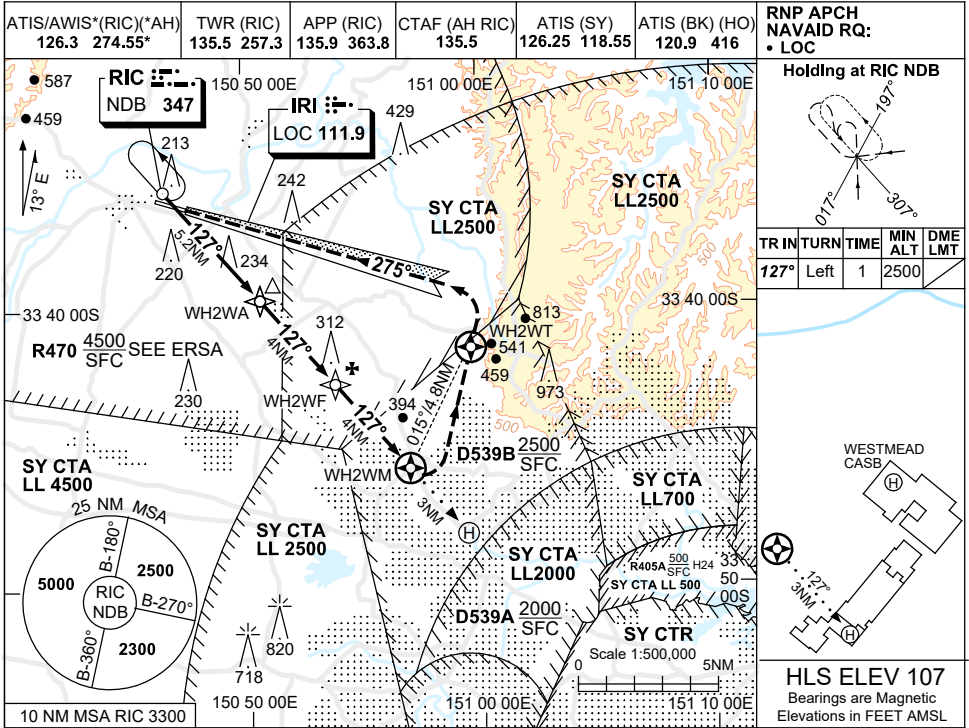
# FOR CASA APPROVED OPERATORS ONLY

USE QNH

RNP 127

13 JUN 2024

## WESTMEAD HOSPITAL, NSW (YWST)



### NOTES

1. COLOUR: SEE SPEC NOTICES.

CATEGORY	H
LNAV (NON VAA) USING AREA QNH	<b>900</b> (793-4.6)
LNAV (NON VAA) USING SY, RIC OR BK QNH	<b>800</b> (693-4.0)
ALTERNATE	NOT APPLICABLE

Changes: WAYPOINT NAMING CONVENTION, Editorial.

WSTGN01-179

# FOR CASA APPROVED OPERATORS ONLY

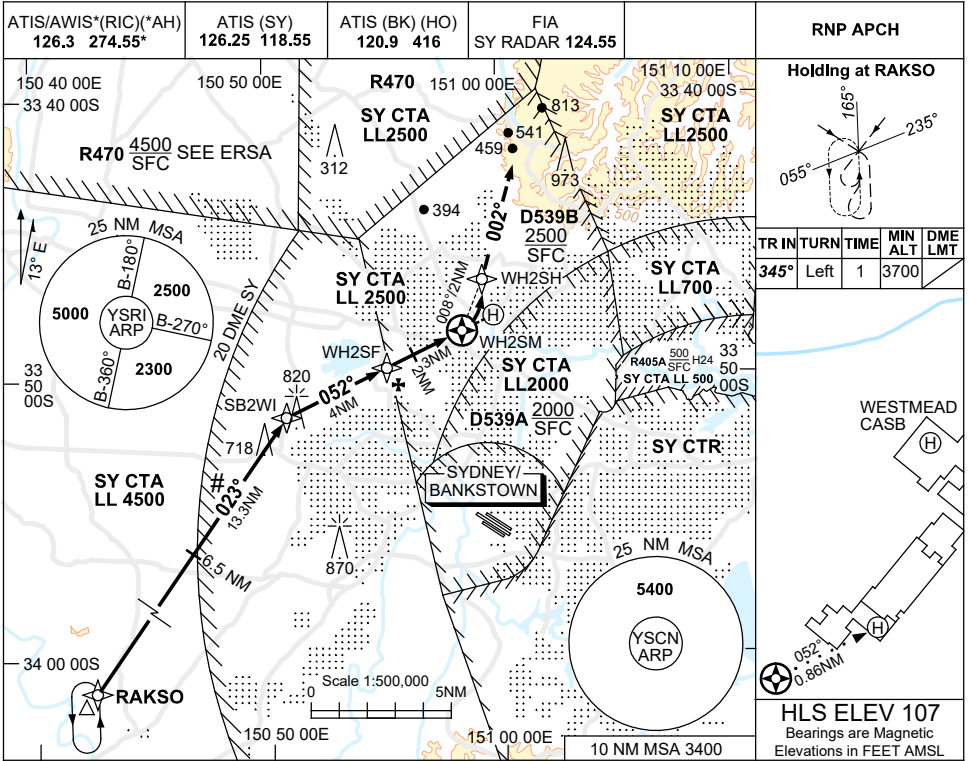
# FOR CASA APPROVED OPERATORS ONLY

USE QNH

RNP 052

5 SEP 2024

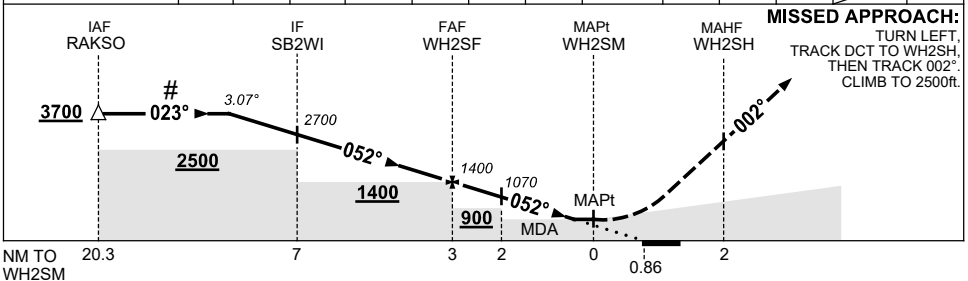
WESTMEAD HOSPITAL, NSW (YWST)



TR IN	TURN	TIME	MIN ALT	DME LMT
345°	Left	1	3700	

**HLS ELEV 107**  
Bearings are Magnetic  
Elevations in FEET AMSL

NM TO NEXT WPT	3.1	2	1	SB2WI	3	2	1	WH2SF	2	1.2	0.9	WH2SM
ALT(3.07° APCH PATH)	3700	3360	3030	2700	2380	2050	1730	1400	1070	800	700	



## NOTES

CATEGORY	H
LNAV (VAA) USING AREA QNH	800 (693-3.9)
LNAV (VAA) USING SY, RIC OR BK QNH	700 (593-3.4)
ALTERNATE	NOT APPLICABLE

- INITIAL SEGMENT CO-INCIDENT WITH INITIAL SEGMENT FOR YSBK RNP RWY 11C PROC.
- COLOUR: SEE SPEC NOTICES.
- APCH CLR RQ FM SY ATS. ALL ACFT TRACK VIA RAKSO UNLESS ADVISED BY ATC.

Changes: YSRI MSA ADDED.

WSTGN02-180

# FOR CASA APPROVED OPERATORS ONLY