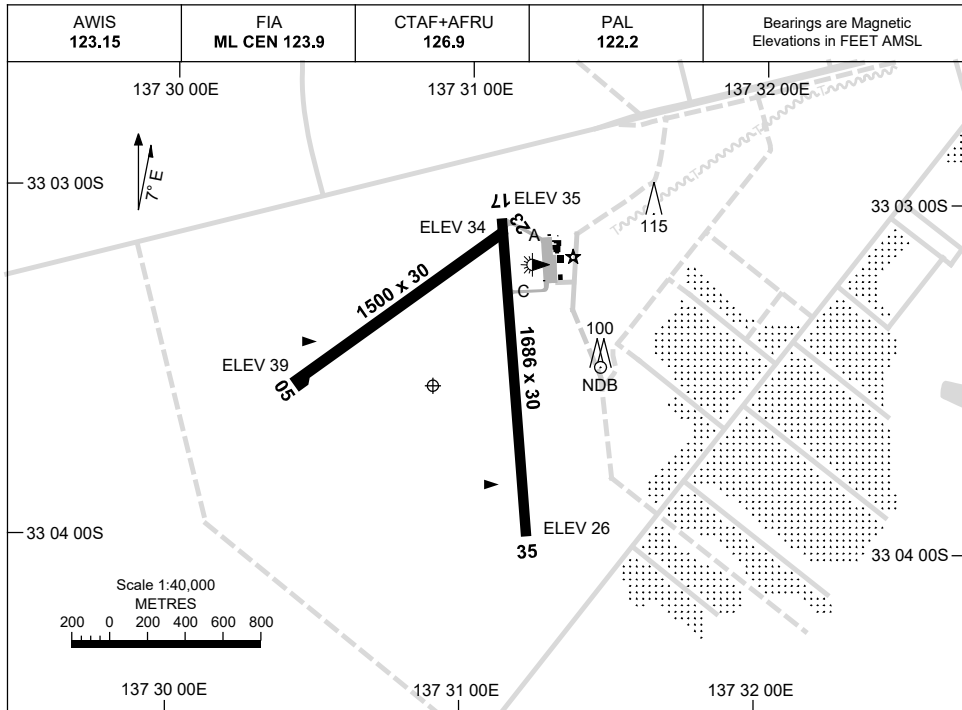


23 MAR 2023

AD ELEV 41
33 03 32S 137 30 52E

AERODROME CHART
WHYALLA, SA (YWHA)



	AERODROME LIGHTING
RWY	ABN : ALT WG 8 SEC TAXIWAY : BLUE EDGE TWY A AND C RL : PAL 122.2 , SDBY (15 SEC)
17 ¹⁶⁷	LIRL
³⁴⁷ 35	LIRL
05 ⁰⁴⁷	NIL
²²⁷ 23	NIL

NOTES

1. FIA FREQ 123.9 AVBL CIRCUIT AREA.

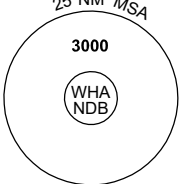
Changes: RWY 05/23 SEALED, TORA, THR ELEV, TURNING NODE, TWY B DCMSD, BLUE EDGE, BUILDINGS, APRON, RWY 17/35 WID.

WHAAD01-174

GNSS ARRIVAL PROCEDURES WHYALLA, SA (YWHA)

8 SEP 2022

AWIS 123.15	FIA ML CEN 123.9	CTAF+AFRU 126.9	PAL 122.2		Bearings are Magnetic Elevations in FEET AMSL
----------------	---------------------	--------------------	--------------	--	--




25 NM MSA

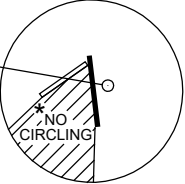
3000

WHA NDB

REFERENCE WAYPOINT WHA NDB



WHA NDB 371




NO CIRCLING

10 NM MSA 1900

AD ELEV 41

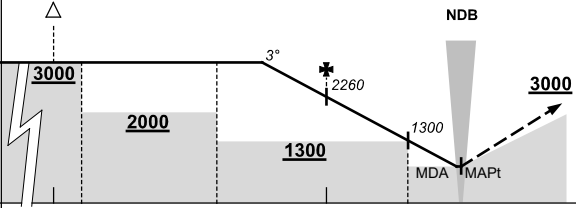
SECTOR A



WHA NDB

274°

336°



NDB

3000

2000

1300

3°

2260

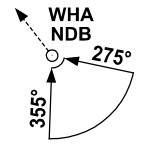
1300

MDA MAPt

MISSED APPROACH:
 CLIMB ON TRACK
 TO 3000FT.

NM TO WHA NDB	25	15	14	9	5	2	0						
CIRCLING MINIMA	A,B: 720-2.4			C: 1240-4.0			D: N/A						
NM TO WHA NDB	7.3	7	6	5	4	3	2	1.8	0.2				
ALT (3° APCH PATH)	3000	2890	2580	2260	1940	1620	1300	1240	720				

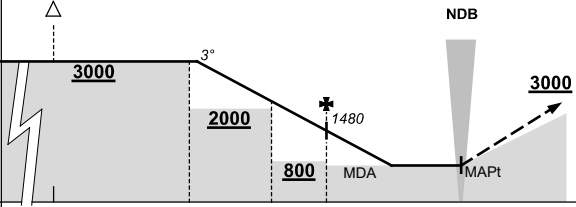
SECTOR B



WHA NDB

275°

355°



NDB

3000

2000

800

3°

1480

MDA MAPt

MISSED APPROACH:
 CLIMB ON TRACK
 TO 3000FT.

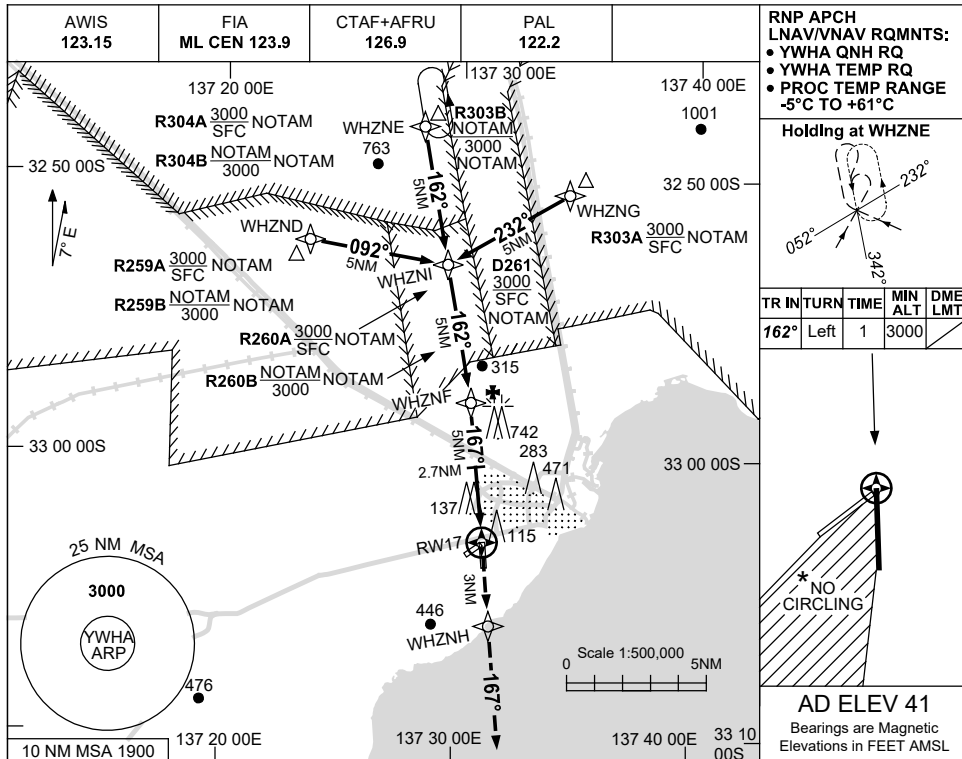
NM TO WHA NDB	25	15	10	7	5	0							
CIRCLING MINIMA	A,B: 710-2.4			C: 1240-4.0			D: N/A						
NM TO WHA NDB	9.8	9	8	7	6	5	4.2	3	2.6				
ALT (3° APCH PATH)	3000	2750	2430	2110	1800	1480	1240	840	710				

Changes: AWIS FREQUENCY.

USE QNH

RNP RWY 17
WHYALLA, SA (YWHA)

1 DEC 2022



RNP APCH LNAV/VNAV RQMTS:

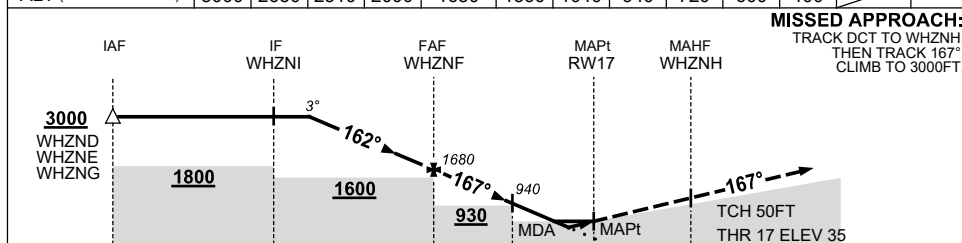
- YWHA QNH RQ
- YWHA TEMP RQ
- PROC TEMP RANGE -5°C TO +61°C

Holding at WHZNE

TR	IN	TURN	TIME	MIN ALT	DME LMT
162°	Left	1	3000		

AD ELEV 41
Bearings are Magnetic
Elevations in FEET AMSL

NM TO NEXT WPT	4.2	3	2	1	WHZNF	4	3	2.7	2	1.6	1	RW17
ALT (3° APCH PATH)	3000	2630	2310	2000	1680	1360	1040	940	720	600	400	



MISSED APPROACH:
TRACK DCT TO WHZNH,
THEN TRACK 167°.
CLIMB TO 3000FT.

NOTES

- MAX IAS:
HOLDING : 210KT.
INITIAL : 210KT.
- * NO CIRCLING IN SECTOR WEST OF RWY 17/35 AND STH OF RWY 05/23.
- CLR RQ WHEN RESTRICTED AREAS ACT.

CATEGORY	A	B	C	D
LNAV/VNAV		400 (365-2.0)		NOT APPLICABLE
LNAV		600 (559-3.2)		
CIRCLING *	710 (669-2.4)		1240 (1199-4.0)	
ALTERNATE	(1169-4.4)		(1699-6.0)	

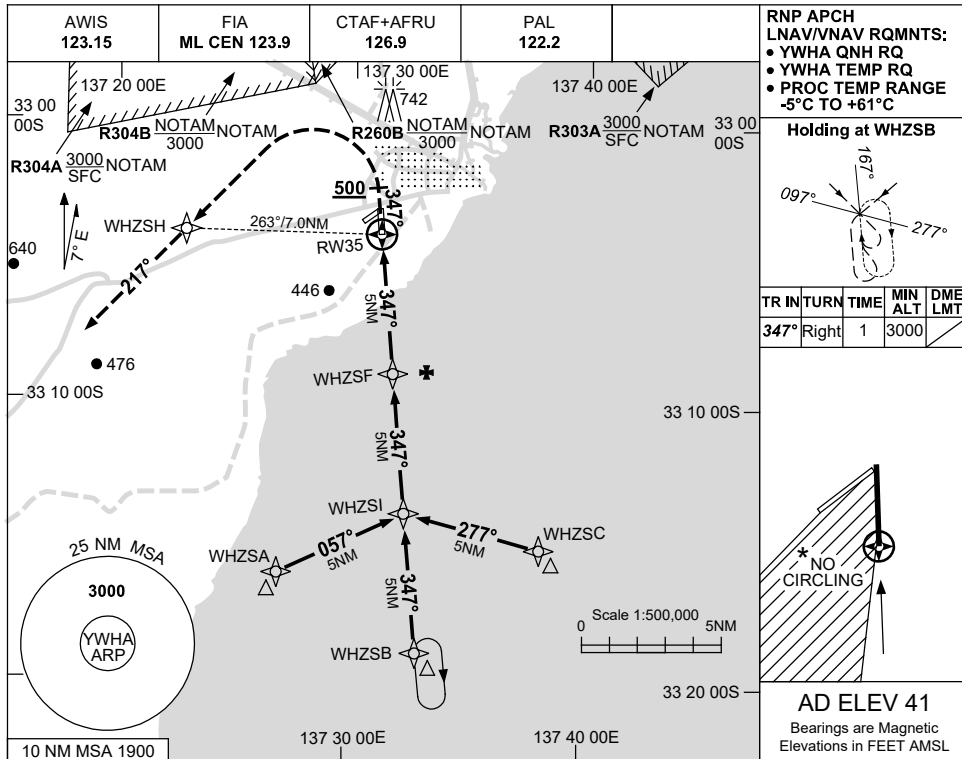
Changes: CHART TITLE, PBN SPECIFICATION BOX.

WHAGN01-173

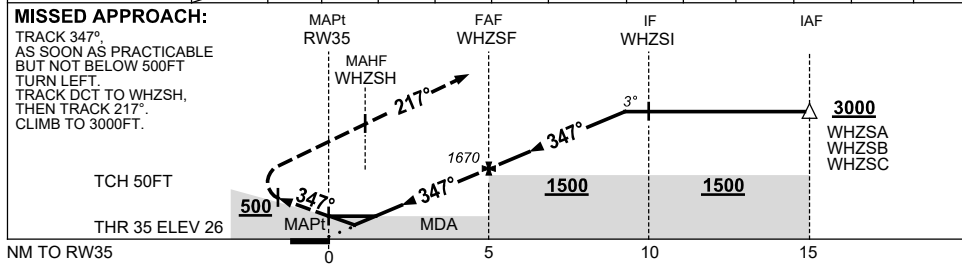
USE QNH

RNP RWY 35
WHYALLA, SA (YWHA)

1 DEC 2022



NM TO NEXT WPT	RW35	1	1.5	2	3	4	WHZSF	1	2	3	4	4.2	
ALT (3° APCH PATH)		390	550	710	1030	1350	1670	1990	2310	2620	2940	3000	



NOTES

CATEGORY	A	B	C	D
LNAV/VNAV		390 (364-2.0)		NOT APPLICABLE
LNAV		550 (524-3.0)		
CIRCLING *	710 (669-2.4)		1240 (1199-4.0)	
ALTERNATE	(1169-4.4)		(1699-6.0)	

- MAX IAS:
INITIAL : 210KT.
MAP TURN: 200KT.
- *2. NO CIRCLING IN SECTOR WEST OF RWY 17/35 AND STH OF RWY 05/23.

Changes: CHART TITLE, PBN SPECIFICATION BOX.

WHAGN02-173

