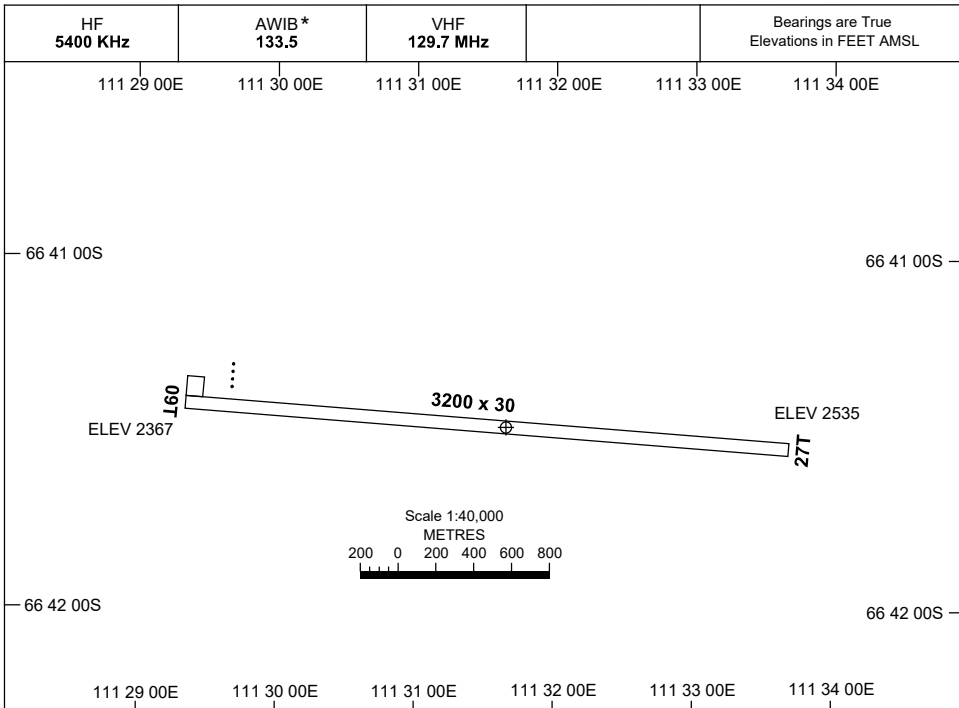


21 MAR 2024

AD ELEV 2543
66 41 29S 111 31 38E

AERODROME CHART
WILKINS RUNWAY, ANTARCTICA (YWKS)



	AERODROME LIGHTING
RWY	RL : NIL
09T <small>094T</small> 274T 27T	PAPI LEFT SIDE 43FT NIL

NOTES

* 1. AWIB PILOT ACTIVATED BY 3 CLICKS/5 SECS.

Changes: FROM SUP H61/23.

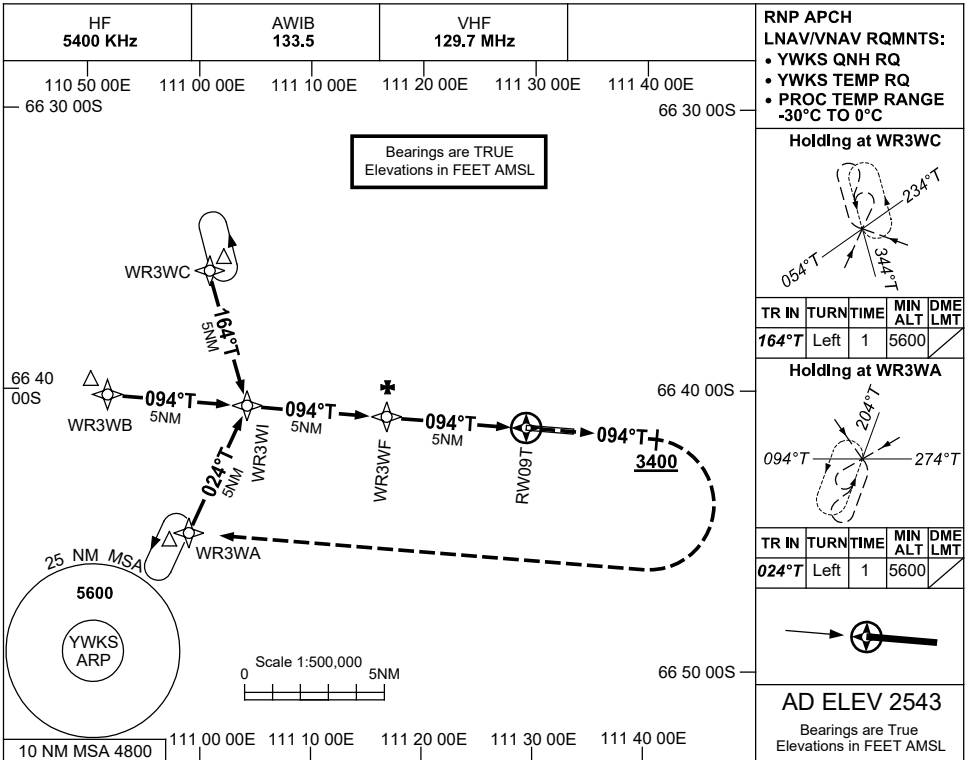
WKSAD01-178



USE QNH WILKINS RUNWAY, ANTARCTICA (YWKS)

RNP RWY 09T

21 MAR 2024



RNP APCH
LNAV/VNAV RQMNTS:

- YWKS QNH RQ
- YWKS TEMP RR
- PROC TEMP RANGE -30°C TO 0°C

Holding at WR3WC

TR IN	TURN	TIME	MIN ALT	DME LMT
164°T	Left	1	5600	

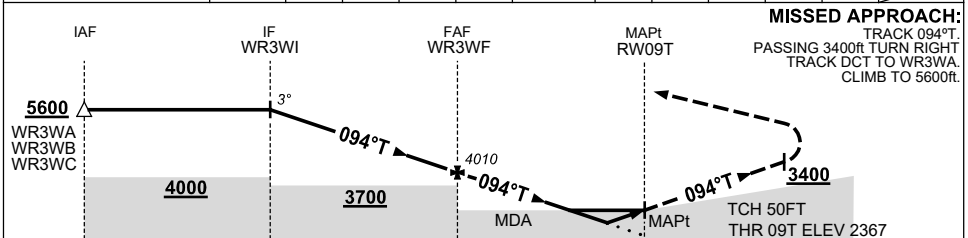
Holding at WR3WA

TR IN	TURN	TIME	MIN ALT	DME LMT
024°T	Left	1	5600	

AD ELEV 2543

Bearings are True
Elevations in FEET AMSL

NM TO NEXT WPT	WR3WI	4	3	2	1	WR3WF	4	3	2	1.2	0.7	RW09T
ALT (3° APCH PATH)	5600	5280	4960	4650	4330	4010	3690	3370	3050	2810	2630	



NOTES

1. MAX IAS:
INITIAL : 210KT.
2. READINGS FROM RADIO & RADAR ALTIMETERS MAY BE ERRATIC OVER ICE & SNOW SURFACES.
3. NO TEMPERATURE CORRECTION RQ FOR INITIAL & INTERMEDIATE MNM SEGMENT ALT AT -30°C AND ABOVE

CATEGORY	A	B	C	D
LNAV/VNAV	2630 (263-1.4)			
LNAV	2810 (443-2.5)			
CIRCLING	3290 (747-2.4)	3550 (1007-4.0)	3650 (1107-5.0)	
ALTERNATE	(1247-4.4)	(1507-6.0)	(1607-7.0)	

Changes: FROM SUP H61/23.

WKSGN01-178