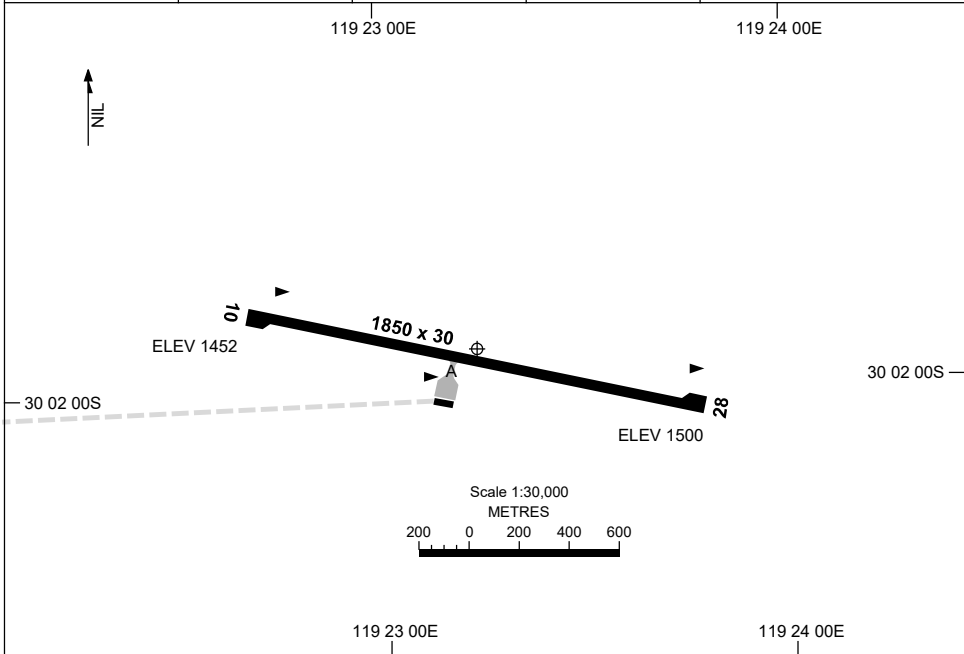


5 SEP 2024

AD ELEV 1502  
30 01 55S 119 23 14E

AERODROME CHART  
**WINDARLING, WA (YWDG)**

FIA ML CEN 123.4	CTAF + AFRU 126.7			Bearings are Magnetic Elevations in FEET AMSL
---------------------	----------------------	--	--	--



RWY	<b>AERODROME LIGHTING</b>	
	RL : PTBL (EMERG ONLY, 90 MIN PN)	
<b>10</b> <sup>103</sup>	PTBL	
<sup>283</sup> <b>28</b>	PTBL	

**NOTES**

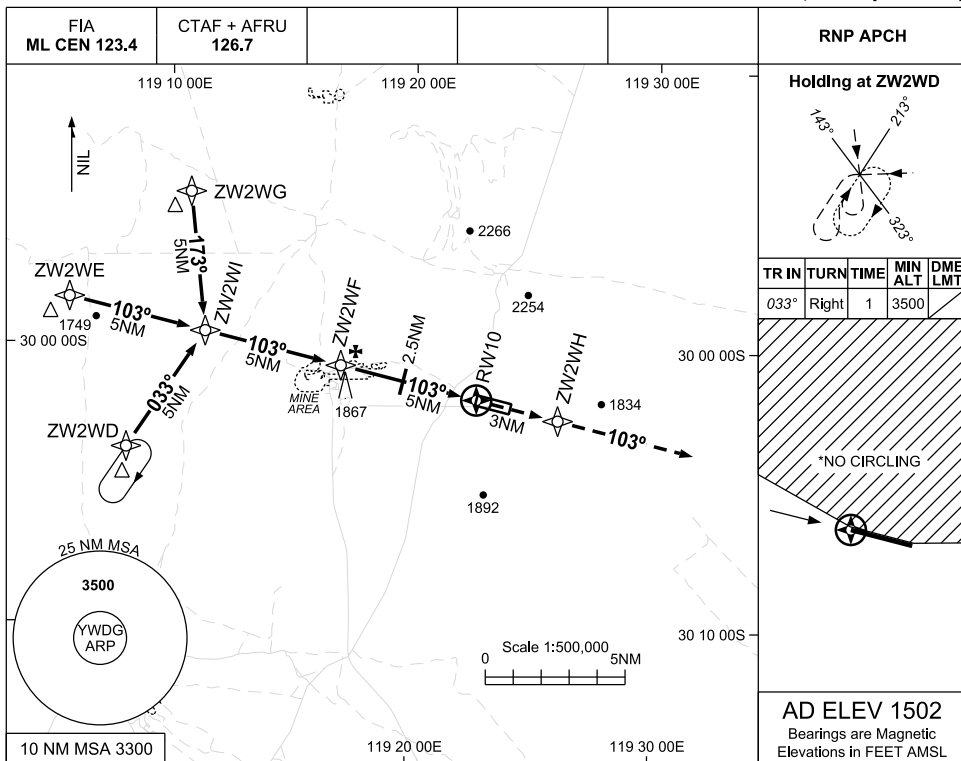
Changes: RWY 10 THR ELEV.

WDGAD01-180

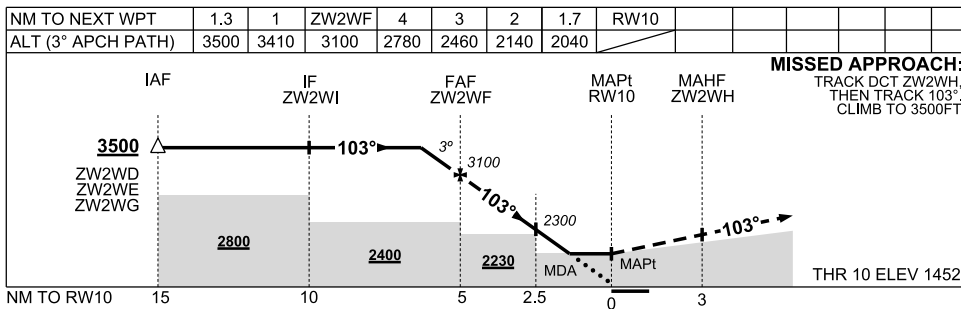
USE QNH

RNP RWY 10  
WINDARLING, WA (YWDG)

5 SEP 2024



AD ELEV 1502  
Bearings are Magnetic  
Elevations in FEET AMSL



**MISSED APPROACH:**  
TRACK DCT ZW2WH,  
THEN TRACK 103°  
CLIMB TO 3500FT

**NOTES**

CATEGORY	A	B	C	D
LNAV	2040 (588-3.3)			NOT AUTHORISED
CIRCLING*	2170 (668-2.4)	2400(898-4.0)		
ALTERNATE	(1168-4.4)		(1398-6.0)	

1. MAX IAS:  
INITIAL : 210KT
- \*2. NO CIRCLING  
N OF RWY 10/28
3. **CAUTION:** CHECK  
BLASTING TIMES  
WITH AD OPR

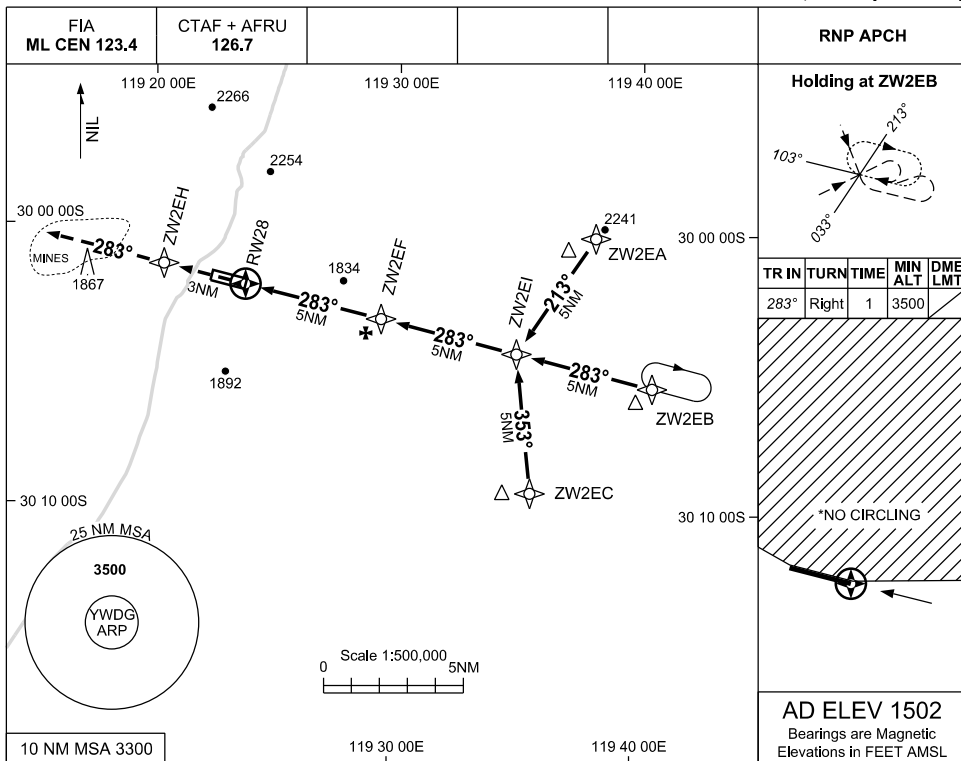
Changes: CHART TITLE, LNAV MDA, EDITORIAL

WDGGN01-180

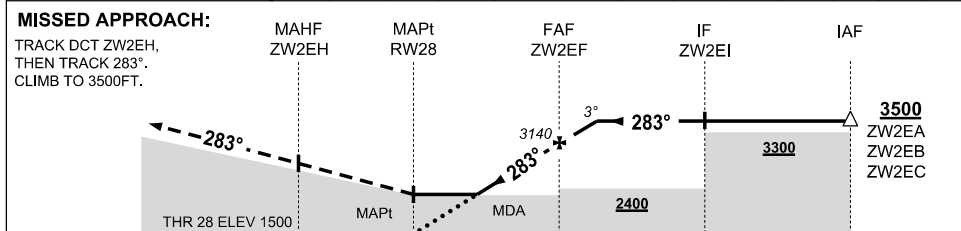
USE QNH

RNP RWY 28  
WINDARLING, WA (YWDG)

7 SEP 2023



NM TO NEXT WPT	RW28	1.9	2	3	4	ZW2EF	1	1.1					
ALT (3° APCH PATH)		2170	2190	2510	2820	3140	3460	3500					



NOTES

CATEGORY	A	B	C	D
LNAV	2170 (668-3.8)			NOT AUTHORISED
CIRCLING*	2170 (668-2.4)		2400(898-4.0)	
ALTERNATE	(1168-4.4)		(1398-6.0)	

- MAX IAS:  
INITIAL : 210KT
- NO CIRCLING  
N OF RWY 10/28
- CAUTION:** CHECK BLASTING TIMES WITH AD OPR

Changes: CHART TITLE, PBN SPECIFICATION BOX

WDGGN02-176