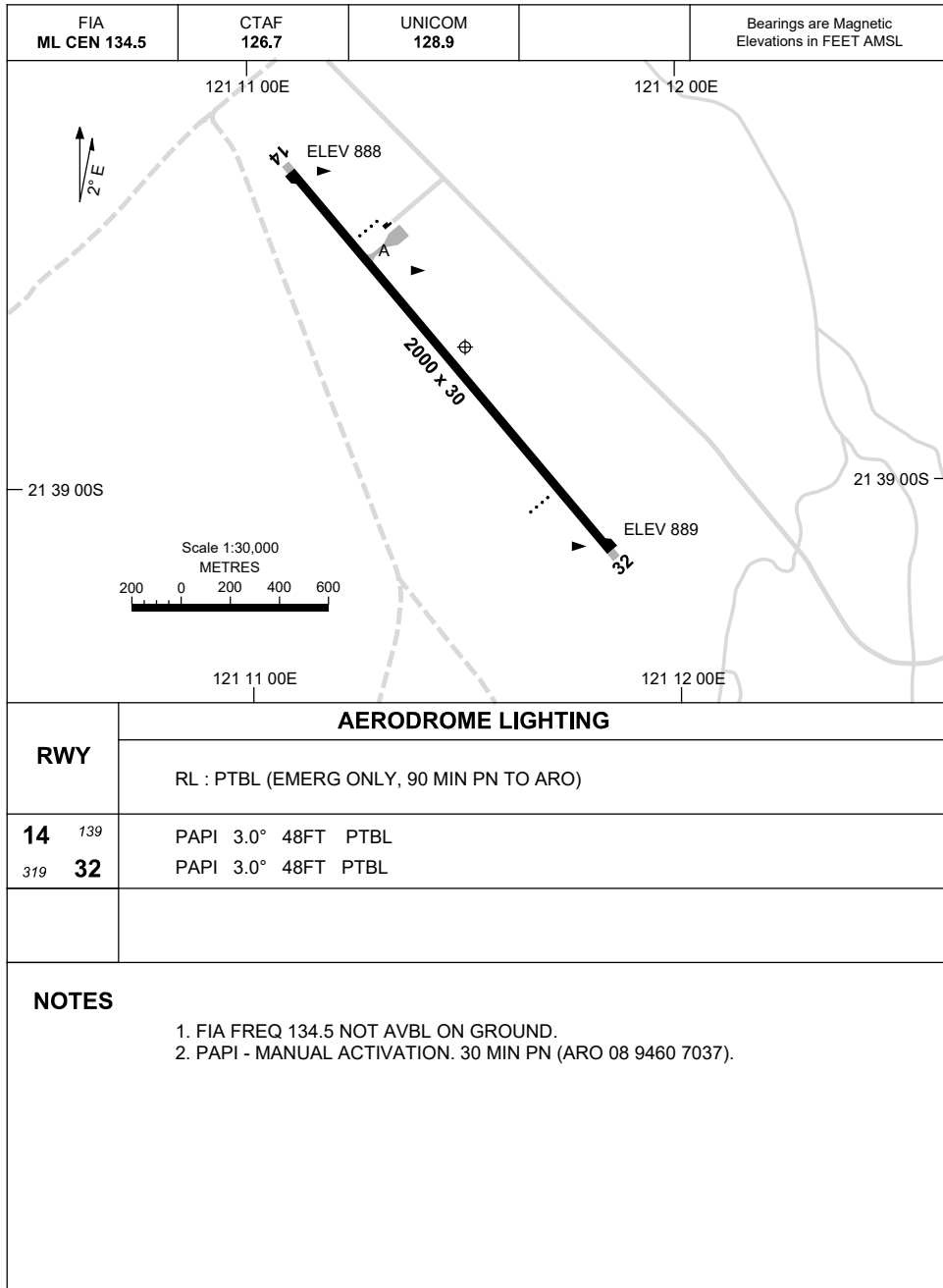


23 MAR 2023

AD ELEV 889
21 38 43S 121 11 30E

AERODROME CHART
WOODIE WOODIE, WA (YWWI)



Changes: AD ELEV, THR ELEV

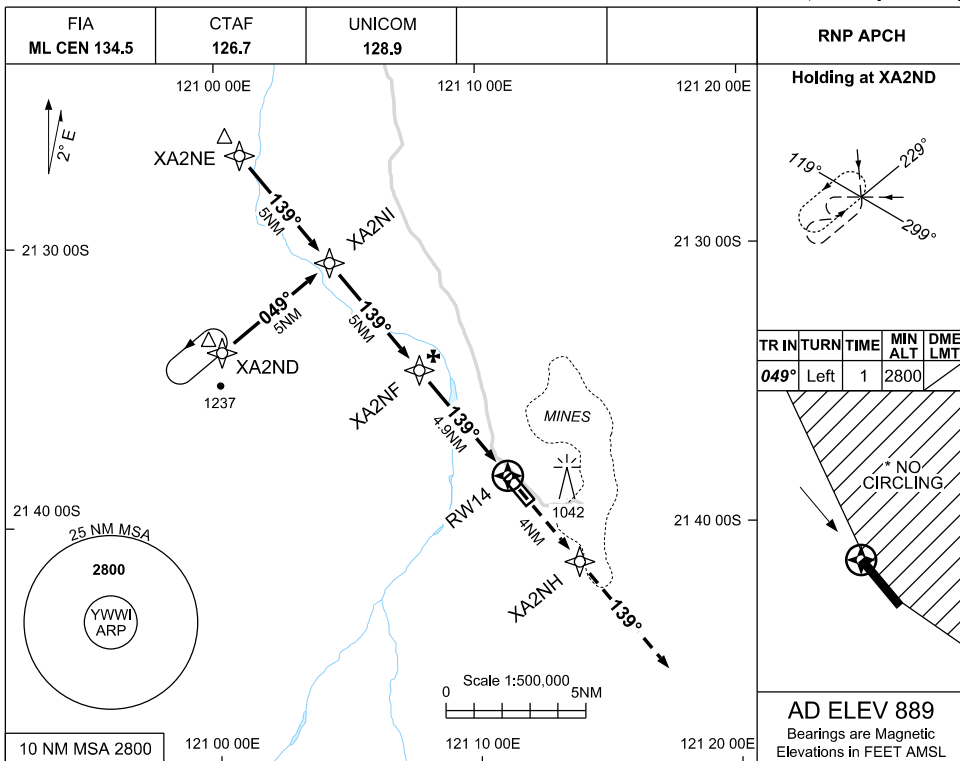
WWIAD01-174

USE QNH

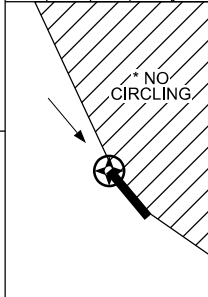
RNP RWY 14

30 NOV 2023

WOODIE WOODIE, WA (YWWI)

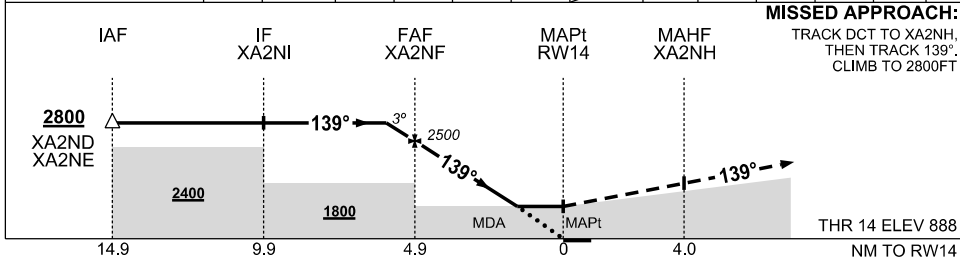


TR	TURN	TIME	MIN ALT	DME LMT
049°	Left	1	2800	



AD ELEV 889
Bearings are Magnetic
Elevations in FEET AMSL

NM TO NEXT WPT	1	XA2NF	4	3	2	1.5	RWY14						
ALT (3° APCH PATH)	2800	2500	2210	1890	1570	1420							



MISSED APPROACH:
TRACK DCT to XA2NH,
THEN TRACK 139°.
CLIMB TO 2800FT

THR 14 ELEV 888
NM TO RWY14

NOTES

- *1. NO CIRCLING EAST OF RWY 14/32
- 2. CAUTION: YCNF PROCS ADJACENT TO E

CATEGORY	A	B	C	D
LNAV	1420 (531-3.0)			NOT APPLICABLE
CIRCLING *	1610 (721-2.4)		1770 (881-4.0)	
ALTERNATE	(1221-4.4)		(1381-6.0)	

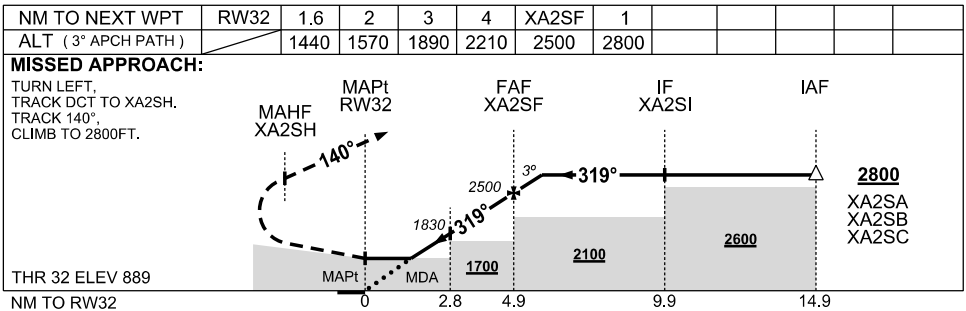
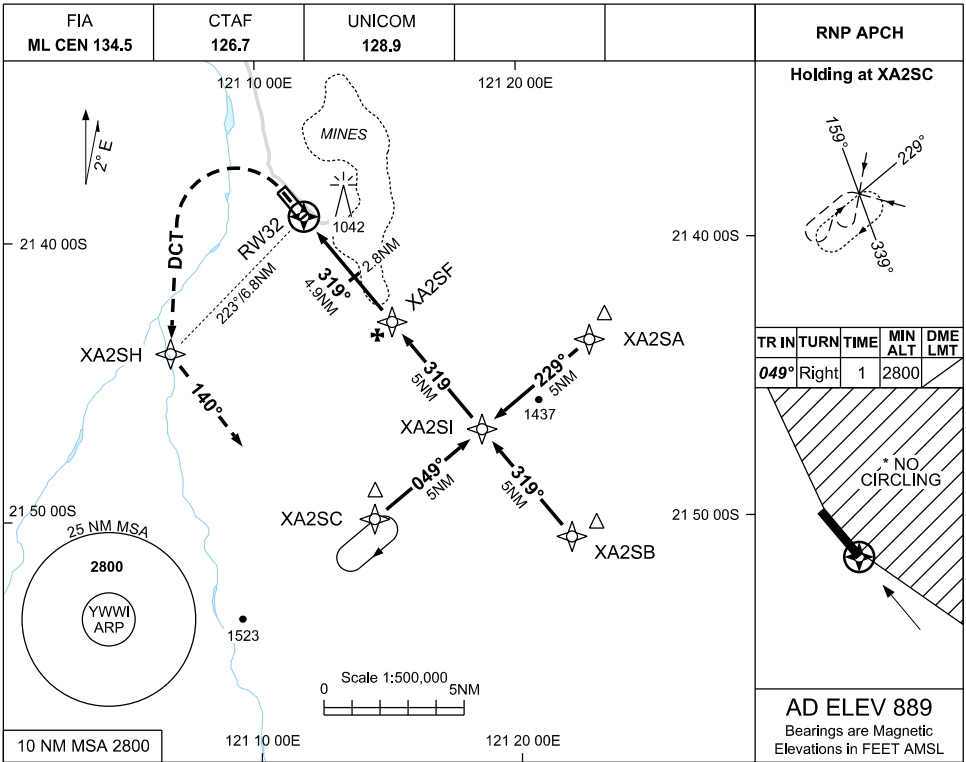
Changes: CHART TITLE, EDITORIAL

WWIGN01-177

30 NOV 2023

USE QNH

RNP RWY 32
WOODIE WOODIE, WA (YWWI)



NOTES

CATEGORY	A	B	C	D
LNAV	1440 (551-3.1)			NOT APPLICABLE
CIRCLING *	1610 (721-2.4)		1770 (881-4.0)	
ALTERNATE	(1221-4.4)		(1381-6.0)	

- MAX IAS:
MAP TURN 210KT
- NO CIRCLING
EAST OF RWY
14/32
- CAUTION: YCNF
PROCS ADJACENT
TO E

Changes: CHART TITLE, EDITORIAL

WWIGN02-177