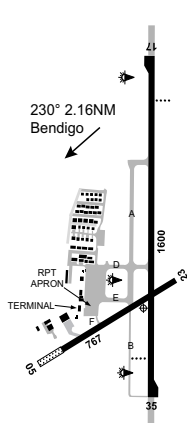


# BENDIGO

## AVFAX CODE 3021

**ELEV 710**

VIC  
364421S 1441947E UTC +10 YBDG  
VAR 11 DEG E CERT

AD OPR City of Greater Bendigo, PO Box 733, Bendigo, VIC, 3552. Email: [airport@bendigo.vic.gov.au](mailto:airport@bendigo.vic.gov.au). PH 03 5434 6000. ARO 0499 700 128. Website: [www.bendigoairport.com.au](http://www.bendigoairport.com.au).

**REMARKS**

- AD fees apply refer to website for details.
- This AD is a Security Controlled Airport. A valid ASIC must be displayed when airside.
- Australian standards approved hi-visibility clothing/vest to be worn whilst on APN, TWY and RWY.
- PPR for all PRKG on RPT APN. CTC ARO mobile.

**HANDLING SERVICES AND FACILITIES**

Skyfuel: AVGAS and JET A1. H24 self-service bowzers accepts MC, V and Skyfuel Carnet card. PH 0418 862 100 or 0417 780 280. Refer to [www.skyfuel.com.au](http://www.skyfuel.com.au) for site information and orientation.

IOR Aviation Pty Ltd: JET A1 by tanker. H24. \$130 call-out fee applies outside 0800 - 1700 Local. PH Justin 0428 179 873.

Bendigo Ground Airport Services: Fixed Base Operator (FBO) service including ground transport. AVBL 24H with PN. CTC Justin HJ JO PH 0408 574 094 or visit [www.bendigo-ground.com.au](http://www.bendigo-ground.com.au) for more information.

**APRONS AND TAXIWAYS**

Code C ACFT APN access via TWY D only. All other TWY 5,700KG MTOW.

**AERODROME OBSTACLES**

- Lit TWR:
  - 889FT AMSL BRG 276 DEG MAG 0.95 NM FM ARP. Infringes inner HZS by 52FT.
  - 852FT AMSL BRG 231 DEG MAG 1.85 NM FM ARP. Infringes inner HZS by 15FT.
- Building spire 941FT AMSL BRG 201 DEG MAG 2.01NM FM ARP. Infringes inner HZS by 104FT.
- Phone TWR 879FT AMSL BRG 222 DEG MAG 1.21NM FM ARP. Infringes inner HZS by 42FT.
- Transmission TWR:
  - 1,059FT AMSL BRG 187 DEG MAG 2.82NM FM ARP. Infringes COS by 94FT.
  - 1,087FT AMSL BRG 193 DEG MAG 3.01NM FM ARP. Infringes COS by 62FT.
  - 1,050FT AMSL BRG 180 DEG MAG 2.72NM FM ARP. Infringes COS by 116FT.
  - 977FT AMSL BRG 176 DEG MAG 2.57NM FM ARP. Infringes COS by 93FT.
  - 918FT AMSL BRG 172 DEG MAG 2.47NM FM ARP. Infringes COS by 65FT.
  - 869FT AMSL BRG 167 DEG MAG 2.37NM FM ARP. Infringes inner HZS by 32FT.
  - 838FT AMSL BRG 162 DEG MAG 2.30NM FM ARP. Infringes inner HZS by 1FT.

**METEOROLOGICAL INFORMATION PROVIDED**

- TAF CAT C, METAR/SPECI.
- AWIS PH 03 8470 3203 - Report faults to BoM.
- AWIS FREQ 128.15 - (requires one-second pulse to activate) - Report faults to AD OPR.

**PHYSICAL CHARACTERISTICS**

05/23	050	25a	5700/650 (94PSI)	130(427) W end grass.	WID 18	RWS 60
17/35	171	52a	PCN 21 /F/D/1400 (203PSI) /T		WID 30	RWS 150

**AERODROME AND APPROACH LIGHTING**

RWY 17/35	LIRL	AFRU+PAL 119.3		SDBY PWR AVBL
RWY 17/35	PAPI(1)	AFRU+PAL 119.3	3.0 DEG50FT	SDBY PWR AVBL

(1) Left side only.  
RWY 17/35 edge light spacing: 60M.

**OTHER LIGHTING**

1. SDBY PWR switchover time: 15 SEC.
2. RWY guard lights (RGL) at RWY/TWY intersections.
3. TWY LGT: Blue edge on D.

**ATS AND AERODROME COMMUNICATION FACILITIES**

FIA MELBOURNE CENTRE 126.8 Circuit area

**LOCAL TRAFFIC REGULATIONS**

1. Circuit activity not permitted BTN 2200-0700 Local.
2. ACFT engine run up not permitted on RPT APN.
3. All Code C ACFT must roll through and use RWY turning nodes and MAX radius turns on RWY and APN.
4. ACFT advised to use tie-down near SkyFuel APN due to heavy prop wash from rotary ACFT.

**FLIGHT PROCEDURES**

Right hand CCTS RWY 05 and RWY 35.

**CTAF - AFRU** 119.3

**ADDITIONAL INFORMATION**

1. Bendigo is a high density training aerodrome.
2. Wildlife hazard exists:
  - a. Refer to NOTAM for seasonal INFO.
  - b. Flying fox in VCY of AD particularly 30MIN FM last light.

**CHARTS RELATED TO THE AERODROME**

1. WAC 3469, 3470.
  2. Also refer to AIP Departure and Approach Procedures.
-