

DEVONPORT**ELEV 33****AVFAX CODE 7003**

TAS

UTC +10

YDPO

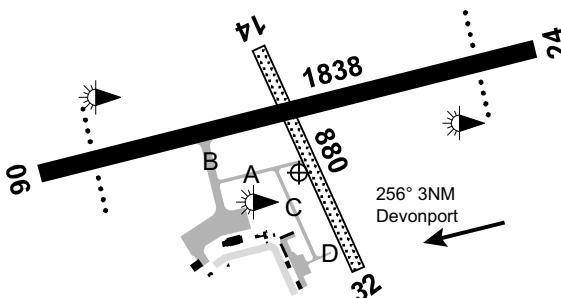
411011S

1462549E

VAR 14 DEG E

CERT

AD OPR Tasmanian Ports Corporation Pty Ltd, PO Box 478, Devonport, TAS, 7310. PH +61 408 341 814.

**REMARKS**

- AD Charges: All ACFT.
- This AD is a Security Controlled Airport.

HANDLING SERVICES AND FACILITIES

H24 AVGAS by Air BP Carnet Card Swipe Bowser.

AVTAS Fuels Pty Ltd: 0600-1800 Local DLY, AH call-out fee - 1HR PN. Mobile 0417 397 828 H24.

JET A1 (tanker) PN 30 MIN. Cash, MC and V.

World Fuel Services H24 overwing/underwing JET A1 bowser. WFS carnet card, V and MC credit card via Compac Pay smartphone APP. Phone 0417 397 828.

AERODROME OBSTACLES

- Communications TWR 69FT AGL BRG 240 MAG 221M FM ARP fitted with red OBST LGT Infringes TNS by 30FT.
- Wind indicators:
 - 30FT AGL BRG 275 MAG 720M FM ARP fitted with red OBST LGT Infringes TNS by 23FT.
 - 30FT AGL BRG 052 MAG 660M FM ARP fitted with red OBST LGT Infringes TNS by 29FT.
- Vegetation:
 - BRG 261 MAG 1,312M FM ARP Infringes APCH SFC by APRX 12FT.
 - BRG 264 MAG 1,200M FM ARP Infringes APCH SFC by APRX 15FT.
 - BRG 251 MAG 1,590M FM ARP Infringes APCH SFC by APRX 1FT.
 - BRG 254 MAG 1,520M FM ARP Infringes APCH SFC by APRX 8FT.
 - BRG 267 MAG 1,060M FM ARP Infringes TNS SFC by APRX 1FT.
 - BRG 265 MAG 1,120M FM ARP Infringes TNS SFC by APRX 11FT.
 - BRG 270 MAG 1,000M FM ARP Infringes TNS SFC by APRX 5FT.
 - BRG 240 MAG 3,300M FM ARP Infringes APCH SFC by APRX 35FT.
 - BRG 070 MAG 4,300M FM ARP Infringes APCH SFC by APRX 60FT.
 - BRG 148 MAG 1,540M FM ARP Infringes APCH SFC by APRX 2FT.

METEOROLOGICAL INFORMATION PROVIDED

- TAF CAT C, METAR/SPECI.
- AWIS Phone 03 6283 8600 - Report faults to BoM.
- AWIS FREQ 133.225 (requires one-second pulse to activate) - report faults to AD OPR.

PHYSICAL CHARACTERISTICS

06/24	062	60a	PCN 29 /F /C /1200 (174PSI) /T Grooved	WID 45	RWS 300
14/32	142	29c	Unrated. Grass	WID 30	RWS 90

AERODROME AND APPROACH LIGHTING

RWY 06/24 LIRL AFRU+PAL 122.3 SDBY PWR AVBL
RWY 06/24 PAPI AFRU+PAL 122.3 3.0 DEG28FT SDBY PWR AVBL
1. RWY edge light spacing: 06/24: 60M.
2. For manual activation of lighting contact ARO 0408 341 814.

OTHER LIGHTING

ABN ALTN 8 WG
HBN OCC R 2 lights on RWY 24 approach.
1. SDBY PWR switchover time: 20 SEC.
2. TWY LGT: Blue edge.

ATS AND AERODROME COMMUNICATION FACILITIES

FIA MELBOURNE CENTRE 120.7 On Ground

LOCAL TRAFFIC REGULATIONS

- Apron bays 1, 2 and 3 not AVBL to non-RPT ACFT without prior approval from AD OPR.
- RWY 06/24 turning restrictions: Pilots to use full RWY width when turning (no sharp turns).

FLIGHT PROCEDURES

- Right hand circuits RQ when OPR on RWY 24.
- Landing RWY 14/32 limited to ACFT not ABV 5,700KG by day in VMC.

CTAF - AFRU 126.9

VHF COM between aircraft on ground Devonport & Wynyard may not be AVBL.

Note: Due to communication difficulty between Devonport and Wynyard for ACFT on GND, pilots are encouraged to make calls airborne and/or on departure, as appropriate, on the CTAF to enhance self help TFC INFO.

ADDITIONAL INFORMATION

Bird hazard exists.

CHARTS RELATED TO THE AERODROME

- WAC 3556.
 - Also refer to AIP Departure and Approach Procedures.
-