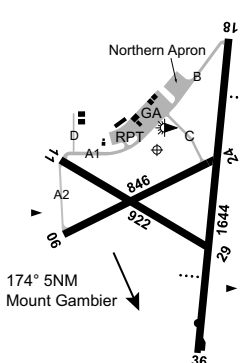


MOUNT GAMBIER**ELEV 212****AVFAX CODE 5006**

SA 374444S 1404707E UTC +9:30 YMTG
 374444S 1404707E VAR 10 DEG E CERT
 AD OPR District Council of Grant, PO Box 724, Mount Gambier, SA,
 5290. ARO 08 8725 1112 (H24). Council PH 08 8721 0444.

REMARKS

- AD Charges: Itinerant ACFT: \$7/tonne MTOW pro-rata per landing. MNM \$12.00.
- BTN 2230-0515 Local, airport entrance gates are locked for security. Opening charges apply. MNM fee \$25.
- This AD is a Security Controlled Airport.
- Parking not permitted on RPT apron without prior approval. RPT ACFT excepted.

HANDLING SERVICES AND FACILITIES

Stark Aviation: 0407 799 727. No text messages. AVGAS self-serve credit card facility (V and MC only).

PASSENGER FACILITIES

WC/LG (restricted hours)/HC/TX/RF (restricted hours).

APRONS AND TAXIWAYS

TWY B, Northern and RPT APN PCN 12/F/B/1000 (145PSI).

AERODROME OBSTACLES

APCH RWY 36 visual segment surface infringed by trees:

- 274FT AMSL, 713M FM THR 170M E of RCL.
- 270FT AMSL, 758M FM THR 135M E of RCL.

METEOROLOGICAL INFORMATION PROVIDED

- TAF CAT C, METAR/SPECI.
- AWIS Phone 08 8150 3809 - Report faults to BoM.
- AWIS FREQ 133.425 (requires one-second pulse to activate) - Report faults to AD OPR.

PHYSICAL CHARACTERISTICS

06/24	054	28a	PCN 6 /F /A /580 (84PSI) /U	WID 30	RWS 90
11/29	111	30a	PCN 6 /F /A /580 (84PSI) /U	WID 30	RWS 90
18/36	176	54a	PCN 12 /F /B /1000 (145PSI) /U	WID 30	RWS 150

AERODROME AND APPROACH LIGHTING

RWY 06/24	LIRL	PAL+AA 122.3	SDBY PWR AVBL
RWY 18/36	LIRL	PAL+AA 122.3	SDBY PWR AVBL
RWY 18/36	PAPI(1)	PAL+AA 122.3	3.0 DEG41FT

(1) Left side.

- RWY edge light spacing:
 - RWY 18/36: 60M.
 - RWY 06/24: 90M.
- HJ Selection of PAL will only activate PAPI. RWY lights will OPR only when poor light levels exist.

OTHER LIGHTING

- TWY LGT: Green CL on B. Blue edge on A1, A2.
- SDBY PWR switchover time: 30 SEC.

ATS AND AERODROME COMMUNICATION FACILITIES

FIA MELBOURNE CENTRE 125.8 For on ground CTC with ML CEN, use
 FREQ 120.3

RADIO NAVIGATION AND LANDING AIDS

NDB MTG 266 374509.2S 1404644.5E Range 75 (HN 75) (1)
VOR MTG 117.0 374505.0S 1404707.0E
(1) Range 50 in sector 110-140.

LOCAL TRAFFIC REGULATIONS

GA area and TWY A1, A2, C (sealed) and D not AVBL to ACFT ABV 5,700KG.

CTAF - AFRU 126.65

ADDITIONAL INFORMATION

1. Bird hazard exists.
2. Weather balloon launch MON and THU APRX 2315 UTC FM 1KM W ARP. Launches may occur at other times.

CHARTS RELATED TO THE AERODROME

1. WAC 3469.
 2. Also refer to AIP Departure and Approach Procedures.
-