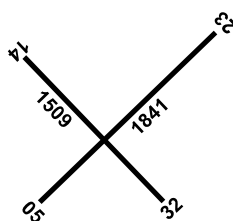


**CUNDERDIN****ELEV 705****AVFAX CODE 6005**

WA  
 313720S 1171300E UTC +8 YCUN  
 VAR 1 DEG W CERT  
 AD OPR Cunderdin Shire Council, PO Box 100, Cunderdin, WA, 6407.  
 Email: admin@cunderdin.wa.gov.au. PH 08 9635 1005. ARO 0409 686  
 938. Fax 08 9635 1464.

**REMARKS**

- AD Charges: All ACFT.
- PPR.
- Gliding OPS HJ, Weekends and Public Holidays (2300-0830 UTC).

**METEOROLOGICAL INFORMATION PROVIDED**

- TAF CAT D, METAR/SPECI.
- AWIS Phone 08 6216 2608 - Report faults to BoM.

**PHYSICAL CHARACTERISTICS**

|       |     |                              |        |        |
|-------|-----|------------------------------|--------|--------|
| 05/23 | 60a | PCN 8 /F /C /850 (123PSI) /T | WID 30 | RWS 90 |
| 14/32 | 50a | PCN 8 /F /C /850 (123PSI) /T | WID 30 | RWS 90 |

**AERODROME AND APPROACH LIGHTING**

RWY 05/23 LIRL(1) AFRU+PAL 127.8

(1) Manual on REQ. LGT Laterally spaced at 50M.

RWY edge light spacing: 05/23: 90M.

**OTHER LIGHTING**

TWY LGT: Blue edge for taxiing on RWY 14/32 SW of RWY 05/23.

**ATS AND AERODROME COMMUNICATION FACILITIES**

FIA MELBOURNE CENTRE 120.3 3000FT

**RADIO NAVIGATION AND LANDING AIDS**

NDB CUN 293 313730.3S 1171326.5E Range 140 (HN 85) (1)  
 (1) Pilot Monitored

**LOCAL TRAFFIC REGULATIONS**

RWS 14/32 and RWS 05/23 width reduced to 60M during gliding OPS. All ACFT parked outside 60M RWS edge.

**FLIGHT PROCEDURES**

Instrument approaches are not AVBL to CAT C ACFT during specified periods.

**CTAF - AFRU 127.8**

**ADDITIONAL INFORMATION**

Gliders monitor 122.7 MHz.

**CHARTS RELATED TO THE AERODROME**

- WAC 3351, 3462.
- Also refer to AIP Departure and Approach Procedures.