

KALGOORLIE-BOULDER**ELEV 1203****AVFAX CODE 6101**

WA

UTC +8

YPKG

304722S

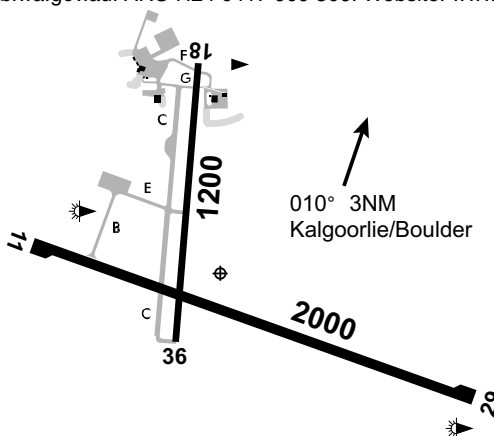
1212742E

VAR 1 DEG E

CERT

AD OPR City of Kalgoorlie-Boulder (CKB), PO Box 2042, Boulder, WA, 6432. Email:

airport.operations@ckb.wa.gov.au. ARO H24 0417 909 506. Website: www.airport.ckb.wa.gov.au.

**REMARKS**

- AD Charges: All ACFT. Refer to website for information on landing and passenger fees.
- All non-RPT, except diversions, requiring parking on the RPT APN or GA East require 24HR PN to the AD OPR.
- This is a security controlled airport. Security requirements:
 - ASIC to be worn and clearly displayed when airside.
 - Security screening is required for all passengers departing from the main terminal within the period of RPT operations – 90 MIN prior to ARR and 30 MIN after DEP.
 - Airside security gate codes AVBL from Duty ARO or airport offices. AH access may incur call-out fees.
- Main terminal open 2200-1100 UTC, hours may vary particularly on weekends. GA terminal adjacent to main terminal open H24.

HANDLING SERVICES AND FACILITIES

AIR BP/MOBIL: 2300-1100 UTC DLY. AH 30 MIN PN, call-out fees apply. Phone 0409 194 840.

JET A1 and AVGAS. H24 AVGAS card bowser.

PASSENGER FACILITIES

WC located within terminal, GA terminal and airside adjacent to AVGAS bowser.

APRONS AND TAXIWAYS

- All surfaces asphalt.
- TWY B PCN 42 WID 18M.
- All other TWY WID 10.5M. Not AVBL to ACFT ABV 5,700KG.
- Main RPT APN PCN 42.
- GA North not AVBL to ACFT ABV 5,700KG.
- GA East not AVBL to ACFT above 5,700KG except when utilising Bay 6 via designated lead in and lead out lines.
- GA APN tie-downs rated to MAX 1,000KG.

AERODROME OBSTACLES

- COM TWR 1,606FT AMSL BRG 255 DEG MAG 2.9NM FM ARP. Infringes outer horizontal SFC by 58FT. Lit by medium intensity beacon.
- Infringing OLS:
 - Towers:

- (i) 1,357FT AMSL BRG 283 MAG 1.96NM FM ARP. Lit red mid and top hazard beacon.
 - (ii) On stockpile 1,345FT AMSL BRG 096 MAG 2.35NM FM ARP. Lit with white strobe.
 - (iii) On stockpile 1,536FT AMSL BRG 072 MAG 3.0NM FM ARP. Lit red hazard beacon infringes inner HZS.
- b. Power poles:
- (i) 1,365FT AMSL BRG 282 MAG 2.51NM FM ARP. Unlit.
 - (ii) 1,353FT AMSL BRG 281 MAG 2.33NM FM ARP. Unlit.

METEOROLOGICAL INFORMATION PROVIDED

- 1. TAF CAT A, METAR/SPECI.
- 2. AWIS Phone 08 6216 2619 - Report faults to BoM.
- 3. AWIS FREQ 126.25 - Report faults to AD OPR.

PHYSICAL CHARACTERISTICS

11/29	110	66a	PCN 42 /F /A /1410 (205PSI) /T	WID 45	RWS 300
18/36	185	39a	PCN 9 /F /A /1000 (145PSI) /T	WID 18	RWS 90

AERODROME AND APPROACH LIGHTING

RWY 11/29	LIRL	AFRU+PAL 126.6		SDBY PWR AVBL
RWY 11/29	PAPI(1)	AFRU+PAL 126.6	3.0 DEG48FT	SDBY PWR AVBL
RWY 18/36	LIRL	AFRU+PAL 126.6		SDBY PWR AVBL

- (1) Left side.
- 1. RWY edge light spacing: 11/29: 60M; 18/36: 60M.
- 2. PAL 10 MIN warning light NW of RWY intersection and primary IWI.
- 3. PAL will activate RWY lights and PAPI during night time hours only. PAL will activate PAPI only during hours of daylight.

OTHER LIGHTING

- 1. Secondary PWR switchover time: 15 SEC.
- 2. TWY LGT: Blue edge.

ATS AND AERODROME COMMUNICATION FACILITIES

FIA	MELBOURNE CENTRE	125.75 On ground
UNICOM	KALGOORLIE-BOULDER	126.6 (1)
	UNICOM	

- (1) CS "AIR BP".

RADIO NAVIGATION AND LANDING AIDS

DME	KG	114.1/ 88X	304723.4S	1212710.6E		(2)
NDB	KG	287	304743.1S	1212748.1E	Range 140 (HN 80)	(3)
VOR	KG	114.1	304723.4S	1212710.0E		(1)

- (1) Monitored by ML.
- (2) Antenna ELEV 1229FT - Monitored by ML.
- (3) Monitored by ML - 346/0.4 to ARP.

LOCAL TRAFFIC REGULATIONS

- 1. All Code C ACFT and ABV must use turning nodes on RWY 11/29 when executing 180 DEG turns.
- 2. ACFT using RWY 18 for TKOF may be unable to see ACFT on crossing RWY. ACFT are to BCST intentions before entering RWY 18.
- 3. ACFT taxiing from Bays 1, 2, 3 and 3A REQ to use MNM thrust when departing to reduce jet blast.
- 4. Ground running of turboprop ACFT on the RPT APN is to be avoided to avoid noise in the Passenger Terminal.
- 5. GA parking marked by green lines is private parking only. Non-approved ACFT parking in these areas may be removed at the owner's expense.

CTAF - AFRU 126.6

NOISE ABATEMENT PROCEDURES

- 1. Flight over residential areas should be minimised particularly at night.
- 2. Ground running of turboprop ACFT on the RPT APN is to be avoided to avoid noise in the passenger terminal

ADDITIONAL INFORMATION

1. Bird hazard exists, pink and grey galahs and Australian ravens year round.
2. Hang gliding OPS NE of Kalgoorlie-Boulder at Lake Perkolilli, Kunalpi - 303422.85S 1214251.40E.
3. Weather balloon launch APRX 2315 UTC FM 950M WNW of ARP. Launches may occur at other times.

CHARTS RELATED TO THE AERODROME

1. WAC 3352.
 2. Aerodrome Obstacle Chart Type A: RWY 11/29, January 2020.
 3. Also refer to AIP Departure and Approach Procedures.
-