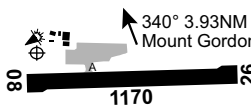


MOUNT GORDON

ELEV 900

AVFAX CODE 4321



QLD 194619S 1392404E UTC +10 YGON
 194619S 1392404E VAR 6 DEG E CERT
 AD OPR Capricorn Copper Pty Ltd, Level 3, 232 Adelaide Street,
 Brisbane, QLD, 4000. PO Box 1933, Milton LPO, QLD, 4064. Email:
 cco.dl.cro@29metals.com. PH AD Manager (on site) 0488 772 930 or
 07 4748 9998. PH 07 3145 0160.

REMARKS

Private AD. PPR for all OPS H24.

APRONS AND TAXIWAYS

TWY A - Code C, WID 15M, asphalt sealed.

AERODROME OBSTACLES

1. MIOL on terrain:
 - a. 1,073FT AMSL, BRG 3.57 DEG MAG 0.27NM FM the ARP. Infringes inner HZS by 54FT.
 - b. 904FT AMSL 1,694M SOT, 37M R of CL and 50FT AGL at 3.3% TKOF GRAD FM RWY 08.
2. Terrain varies up to:
 - a. 1,190FT AMSL BTN BRG 252 to 292 DEG MAG, and BTN 1.0 to 1.5NM FM the ARP. Infringes the inner HZS up to 171FT.
 - b. 1,160FT AMSL BTN BRG 343 to 10 DEG MAG, and BTN 0.9 to 1.3NM FM the ARP. Infringes the inner HZS up to 141FT.
3. Terrain:
 - a. 1,170FT AMSL 3,388M SOT, 132M L of CL and 276FT AGL at 3.9% TKOF GRAD FM RWY 26.
 - b. 1,180FT AMSL BRG 323.6 DEG MAG 0.72NM FM the ARP. Infringes the inner HZS up to 161FT.
 - c. 1,072FT AMSL BRG 15.1 DEG MAG 0.48NM FM the ARP. Infringes the inner HZS up to 53FT.
4. Transmission TWR 1,030FT AMSL 147M L of RCL 2,417M FM SOT 3.53% TKOF GRAD FM RWY 26.
5. Power line 1,004FT AMSL 71M L of RCL 2,404M FM SOT 2.92% TKOF GRAD FM RWY 26.

PHYSICAL CHARACTERISTICS

08/26 085 38a PCN 12 /F /B /850 (123PSI) /U Central 18M of WID 30 RWS 80
WID sealed

RWY WID will revert to 18M when soft wet SFC NOTAM is current. RWY AVBL to ACFT approved for 18M OPS.

AERODROME AND APPROACH LIGHTING

RWY 08/26 LIRL(1)
(1) MED EMERG and PPR use only.

ATS AND AERODROME COMMUNICATION FACILITIES

FIA BRISBANE CENTRE 122.4

CTAF 126.7

ADDITIONAL INFORMATION

Wildlife hazard exists.

CHARTS RELATED TO THE AERODROME

WAC 3220.