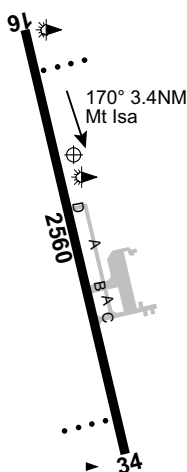


MOUNT ISA**ELEV 1121****AVFAX CODE 4301**

QLD
203950S 1392919E UTC +10 YBMA
VAR 6 DEG E CERT
AD OPR Mount Isa Airport Pty Ltd, PO Box 2305, Mount Isa, QLD, 4825.
Email: aro@isaairport.com.au. PH 07 4409 3000. ARO 0428 030 409 H24.
Fax 07 4743 0101. Website: www.mountisaairport.com.au.

REMARKS

1. Conditions of Use and AD Charges apply to Mount Isa Airport, details available on website (navigate Regulatory > Charges).
2. This AD is a Security Controlled Airport.
3. All pilots and operators must possess and display a current Aviation Security Identification Card (ASIC) when in all areas airside unless under escort. Passengers must be escorted at all times.
4. Parking for ACFT ABV 5,700KG MTOW requires 48HR PN. Email ARO with request.
5. For airside access CTC ARO. Access from GA to RPT terminal and landside through Gate 7, remaining clear of Security Restricted Area.

HANDLING SERVICES AND FACILITIES

BP - Air Fuel Isa: H24. PH/Fax 07 4743 4843, 0419 735 998, VHF 129.9. AVGAS 24HR AIR BP
Carnet cardswipe bowser, JET A1, O117, O125, MC and V. AVFAX Briefing Facilities AVBL.
VIVA Energy Australia - NQ Fuel Services MON-FRI 0700-1900 Local, SAT 0800-1200 Local, SUN
0830-1900 Local. PH 07 4743 7211, MOB 0407 961 355, Email: mtisa@nqfuelservices.com.au.
AH 1HR PN (call-out fee applies).
Airside Logistics: PH 07 4744 8500, 0407 111 211 (H24). Ground handling services - marshalling,
baggage/freight, check-in, crew and PAX transfers, Email: isaops@airsidelogistics.com.au,
Website: www.airsidelogistics.com.au

General

The OPR does not provide ACFT marshalling services. All requests for ACFT marshalling should be directed to the airlines or FBO (if applicable).

AERODROME OBSTACLES

1. Lit stack 2,129FT AMSL BRG 179 DEG MAG 3.6NM FM ARP. Infringes COS by 690FT.
2. Fence 1,115FT AMSL BRG 162 DEG MAG 0.9NM FM ARP. Infringes TNS by 3FT.
3. Power pole 1,157FT AMSL BRG 159 DEG MAG 1.1NM FM ARP. Infringes TNS by 5FT.
4. Towers:
 - a. Lit 1,585FT BRG 142 DEG MAG 3.1NM FM ARP infringes COS by 305FT.
 - b. Lit 1,545FT BRG 156 DEG MAG 4.6NM FM ARP.
 - c. Powerline TWR 1,254FT AMSL BRG 339 DEG MAG 2.1NM FM ARP.
 - d. Powerline TWR 1,281FT AMSL BRG 342 DEG MAG 2.4NM FM ARP.
 - e. Powerline TWR 1,257FT AMSL BRG 334 DEG MAG 1.9NM FM ARP.
5. Trees on hill:
 - a. 1,282FT AMSL BRG 141 DEG MAG 1.1NM FM ARP. Infringes inner HZS by 24FT.
 - b. 1,306FT AMSL BRG 155 DEG MAG 2.2NM FM ARP. Infringes inner HZS by 47FT.
 - c. 1,292FT AMSL BRG 156 DEG MAG 2.2NM FM ARP. Infringes inner HZS by 34FT.

METEOROLOGICAL INFORMATION PROVIDED

1. TAF CAT B, METAR/SPECI.
2. AWIS PH 07 3564 3729 - Report faults to BoM.
3. AWIS FREQ 135.8 - Report faults to AD OPR.

PHYSICAL CHARACTERISTICS

16/34 162 84a PCN 34 /F /A /1400 (203PSI) /U Grooved WID 45 RWS 150

AERODROME AND APPROACH LIGHTING

RWY 16/34	MIRL	AFRU+PAL 126.5		SDBY PWR AVBL
RWY 16/34	PAPI(1)	AFRU+PAL 126.5	3.0 DEG53.3FT	SDBY PWR AVBL
RWY 16/34	PTBL(2)			BY PRIOR
				ARRANGEMENT

- (1) Left side.
- (2) 60MIN PN. CTC ARO.
 1. RWY edge light spacing: 16/34: 60M.
 2. Portable RWY lighting AVBL with 60 MIN PN to ARO.

OTHER LIGHTING

- ABN FLG 8 WG
1. Secondary PWR switchover time: 15 SEC.
 2. TWY LGT: Blue edge on B.

ATS AND AERODROME COMMUNICATION FACILITIES

FIA BRISBANE CENTRE 122.4 On Ground

RADIO NAVIGATION AND LANDING AIDS

DME	MA	117.5/122X	203952.7S	1392908.9E		(1)
NDB	MA	338	204031.5S	1392911.6E	Range 100 (HN 60)	(2)
VOR	MA	117.5	203952.6S	1392908.3E		

- (1) Antenna ELEV 1,136FT
- (2) Antenna ELEV 1,185FT

TACAN also AVBL. PTBL facility, deployed as required by MIL authorities. IDENT code, channel assignment and activation by NOTAM.

LOCAL TRAFFIC REGULATIONS

1. Local helicopter OPS are to be conducted from/to the eastern grass helicopter APN, which is the area contained by the blue cone markers off the E end of TWY C. The eastern grass helicopter APN is not a designated HLS and separation is not provided BTW ACFT and/or obstructions on the ground while operating within the confines of the eastern grass helicopter APN.
2. Skid mounted ACFT are not permitted to park on any sealed or asphalt surface, including bowsers, TWY, APN, run-up bay, etc.
3. Air taxi to/from the eastern grass helicopter APN to the RWY via TWY C is to be avoided unless necessary. If necessary, air taxiing is to be conducted as high and as quickly as practical, to minimise dispersion of debris into hangars and workshops.
4. Training flights permitted BTN 2100-1200 UTC only.
5. No turns permitted in the overrun beyond RWY THR.
6. Due to the grades on RWY 16/34, the opposite ends of the RWY are not visible when TKOF. Mandatory CTAF BCST required before OPR on RWY.
 - a. From the TWY holding point, ACFT at THR RWY 16 may not be visible.
 - b. ACFT at THR 16 and 34 may not be visible to one another.
 - c. CTAF BCST FM ACFT at the TWY holding point may not be received by ACFT at THR RWY 16.

FLIGHT PROCEDURES

Right hand circuits RQ when OPR on RWY 34.

CTAF - AFRU 126.5

NOISE ABATEMENT PROCEDURES

Noise Abatement Procedures (NAP) apply. Refer AIP DAP.

ADDITIONAL INFORMATION

1. Blasting will be conducted at various sites WI 6NM RAD of Mount Isa AD. SFC - 2,500FT.
2. A wildlife hazard exists year round at this AD.
 - a. Bird activity is significantly increased after rainfall events.
 - b. Whistling kite, magpie lark and nankeen kestrel present all year round.
 - c. Black kites occur year round and occur in very high numbers during insect swarms, NOTAM will be issued in these events.
 - d. Australian pratincole present in greater numbers OCT to APR but may occur seasonally year round.
3. For current information refer to NOTAM and ISA Bird Watch Report.
Flying foxes are a seasonal risk at dawn and dusk on the APCH to the RWY (on and off airfield). Peak risk period is AUG through until FEB although potential risk exists year round.
4. Multiple gas turbine facilities emit high velocity plume rise at locations APRX 7NM S of AD.
5. Weather balloon launch APRX 2315 FM 1.5KM S ARP. Launches may occur at other times.

CHARTS RELATED TO THE AERODROME

1. WAC 3233.
 2. Also refer to AIP Departure & Approach Procedures.
-