

**NARROMINE****ELEV 782****AVFAX CODE 2221**

NSW

UTC +10

YNRM

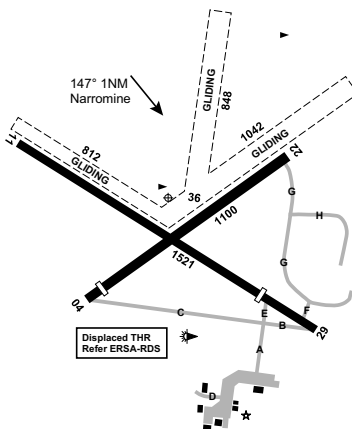
321252S

1481329E

VAR 11 DEG E

CERT

AD OPR Narromine Shire Council, PO Box 115, Narromine, NSW, 2821. PH 02 6889 9999: AH 0417 413 176. ARO 0408 852 931 (H24). Fax 6889 9998.

**HANDLING SERVICES AND FACILITIES**

Inland Petroleum: H24. Phone 0428 607 372, 0417 260 031. AVGAS.

**PASSENGER FACILITIES**

PT/TX (131 008)/AC (02 6889 2129)/RF/WC/ME (02 6889 2366) ME Avionics (02 6889 2733)

**APRONS AND TAXIWAYS**

1. TWY C 5,700KG MAUW.
2. TWY E 2,000KG MAUW.
3. TWY F, G, H and K gravel.
4. TWY L bitumen.

**AERODROME OBSTACLES**

LIOL - 945FT AMSL, 1,900M, 154 M FM RWY intersection.

**PHYSICAL CHARACTERISTICS**

04/22	043	36a	PCN 10 /F /B /580 (84PSI) /T	WID 30	RWS 90
11/29	110	50a	PCN 10 /F /B /580 (84PSI) /T	WID 30	RWS 150

**AERODROME AND APPROACH LIGHTING**

RWY 11/29 LIRL PAL 122.4

RWY 11/29 edge light spacing: 60M.

**OTHER LIGHTING**

ABN FLG 10 W

TWY LGT: Blue edge on TWY A and B from APN to end RWY 11.

**ATS AND AERODROME COMMUNICATION FACILITIES**

FIA MELBOURNE CENTRE 123.9 Circuit Area

**LOCAL TRAFFIC REGULATIONS**

Access to TWY D FM APN not AVBL.

**FLIGHT PROCEDURES**

Gliding OPS HJ. Gliders operate common circuit direction from separate strips alongside RWS.

Glider strips marked by orange gable markers. Also AVBL for tail-skid-equipped ACFT.

Simultaneous OPS NOT permitted.

**CTAF 126.7**

**ADDITIONAL INFORMATION**

Bird hazard (cockatoos, crows and hawks) exists in VCY of AD. Increased numbers expected between SEP and MAR.

**CHARTS RELATED TO THE AERODROME**

1. WAC 3456, 3457.
  2. Also refer to AIP Departure and Approach Procedures.
-